

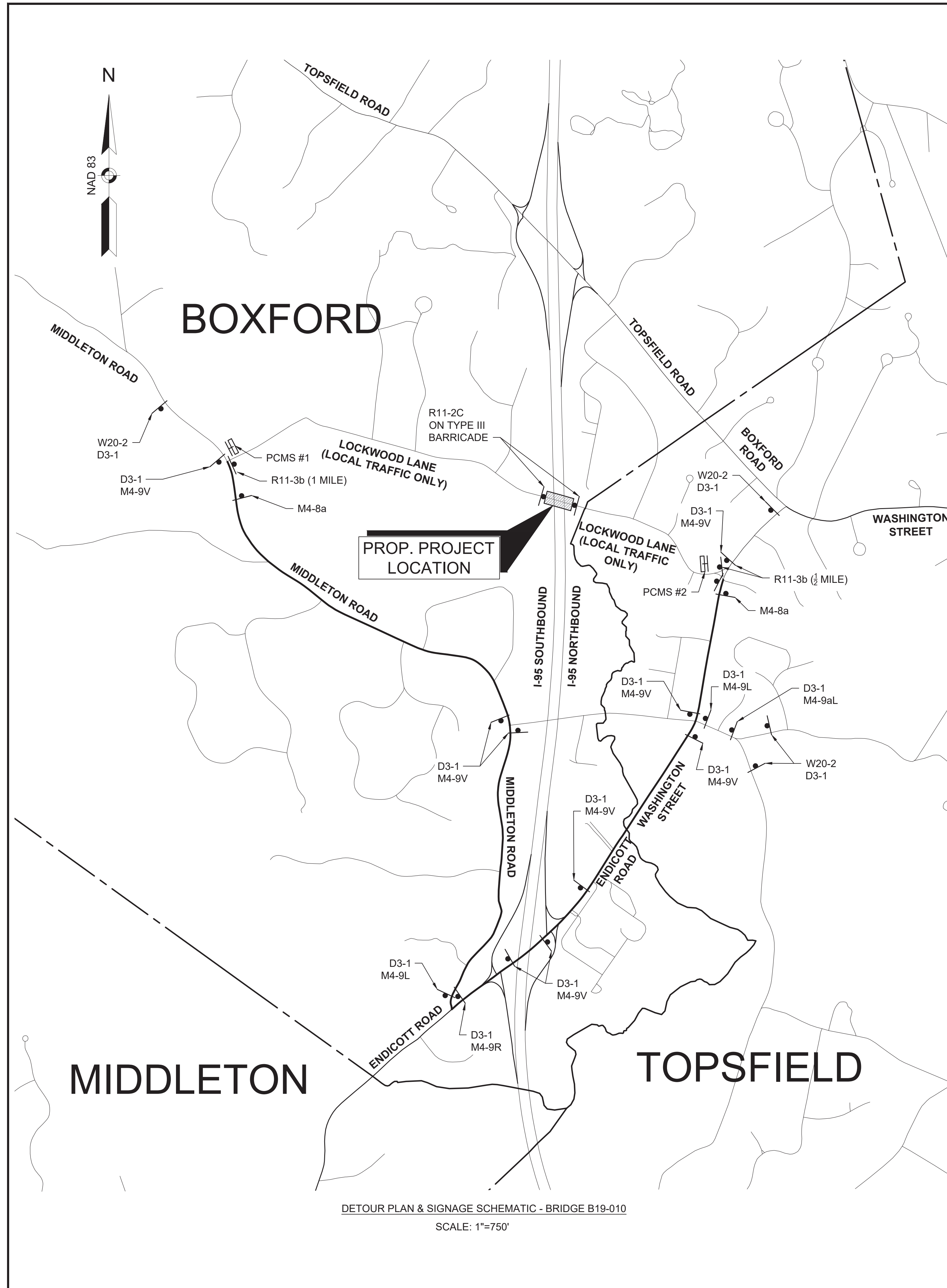
**BOXFORD-MERRIMAC-PEABODY
I-95 AND I-495 CORRIDORS**

STATE	FED. AID PROJ. NO.	SHEET NO.	TOTAL SHEETS
MA	NFA	50	74
PROJECT FILE NO.		613004	

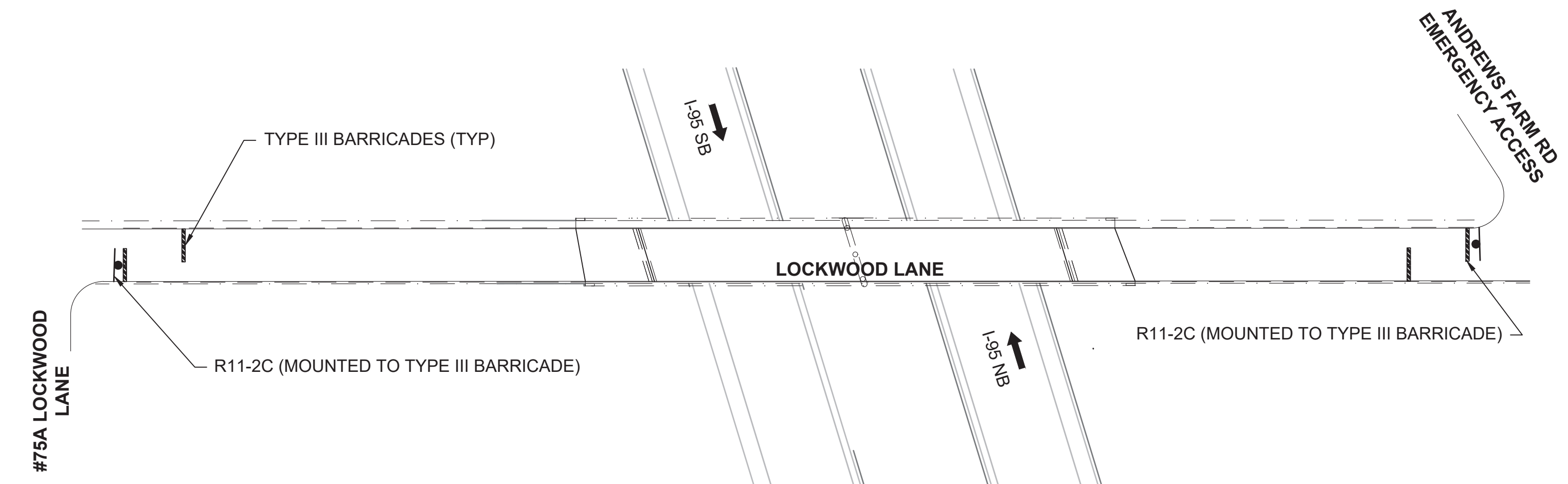
**TEMPORARY TRAFFIC CONTROL PLANS
B-19-010 TTCP (1 OF 3)**

BRIDGE B-19-010 TOPSIDE DETOUR NOTES:

1. ALL DETOURS ARE ESTABLISHED FOR 24-HOURS A DAY. TEMPORARY DETOUR SIGNING, BARRICADES, AND ALL OTHER NECESSARY TRAFFIC CONTROL DEVICES SHALL BE REMOVED FROM THE HIGHWAY OR COVERED WHEN THEY ARE NOT REQUIRED FOR DETOUR OF TRAFFIC.
2. PORTABLE CHANGEABLE MESSAGE SIGN (PCMS) SHALL BE IN PLACE 14 DAYS PRIOR TO THE INITIATION OF THE DETOUR.
3. REFER TO GENERAL TEMPORARY TRAFFIC CONTROL NOTES ON SHEETS 48 THROUGH 49 FOR ADDITIONAL INFORMATION.



DETOUR PLAN & SIGNAGE SCHEMATIC - BRIDGE B19-010
SCALE: 1"=750'



BRIDGE CLOSURE SET-UP - BRIDGE B-19-010
SCALE: 1"=60'

TEMPORARY TRAFFIC CONTROL LEGEND

- WORK ZONE
- DIRECTION OF TRAVEL
- SIGN
- PORTABLE CHANGEABLE MESSAGE SIGN (PCMS)
- CONSTRUCTION BARRIER
- TYPE III BARRICADES

MM/DD/YYYY	ISSUED FOR CONSTRUCTION
DATE	DESCRIPTION
USE ONLY PRINTS OF LATEST DATE	

A008003 - 52

613004_BR50-52(LOCKWOODTMP).DWG Plotted on 23-Dec-2022 2:14 PM

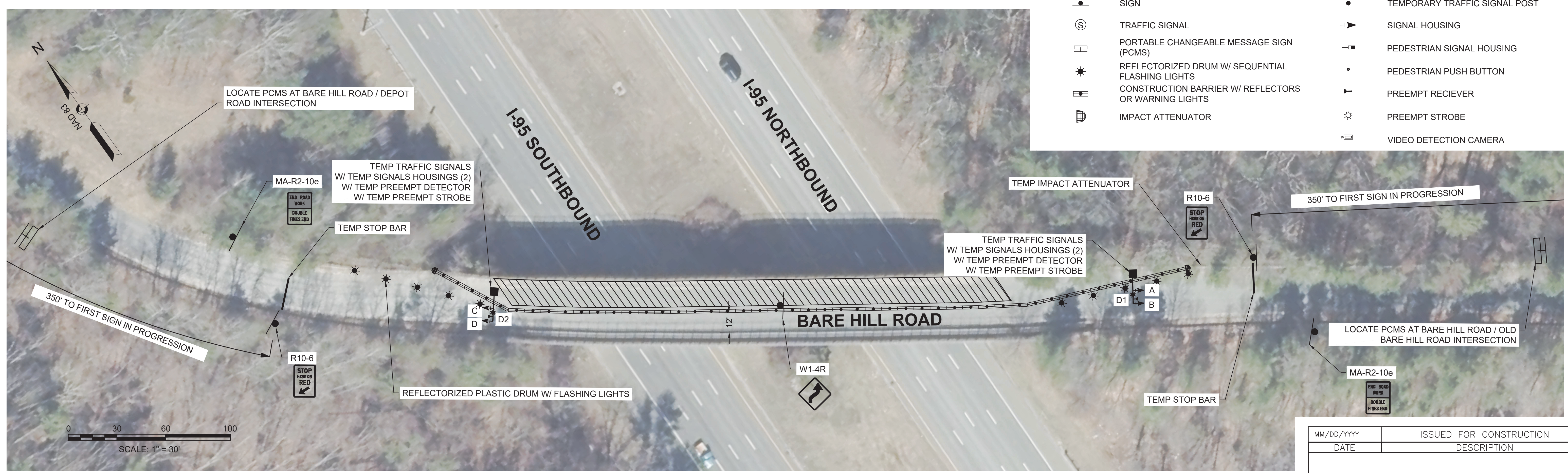
12-23-2022

PS&E Submittal (613004)

Proposal No. 613004-121027



PHASE 1 - ONE LANE ALTERNATING TRAFFIC WITH TEMPORARY TRAFFIC SIGNAL
SCALE: 1" = 30'



PHASE 2 - ONE LANE ALTERNATING TRAFFIC WITH TEMPOARY TRAFFIC SIGNAL
SCALE: 1" = 30'

TEMPORARY TRAFFIC CONTROL LEGEND

	WORK ZONE		PORTABLE TRAFFIC SIGNAL W/ MAST ARM
	SIGN		TEMPORARY TRAFFIC SIGNAL POST
	TRAFFIC SIGNAL		SIGNAL HOUSING
	PORTABLE CHANGEABLE MESSAGE SIGN (PCMS)		PEDESTRIAN SIGNAL HOUSING
	REFLECTORIZED DRUM W/ SEQUENTIAL FLASHING LIGHTS		PEDESTRIAN PUSH BUTTON
	CONSTRUCTION BARRIER W/ REFLECTORS OR WARNING LIGHTS		PREEMPT RECIEVER
	IMPACT ATTENUATOR		PREEMPT STROBE
			VIDEO DETECTION CAMERA

MM/DD/YYYY	ISSUED FOR CONSTRUCTION
DATE	DESCRIPTION
USE ONLY PRINTS OF LATEST DATE	

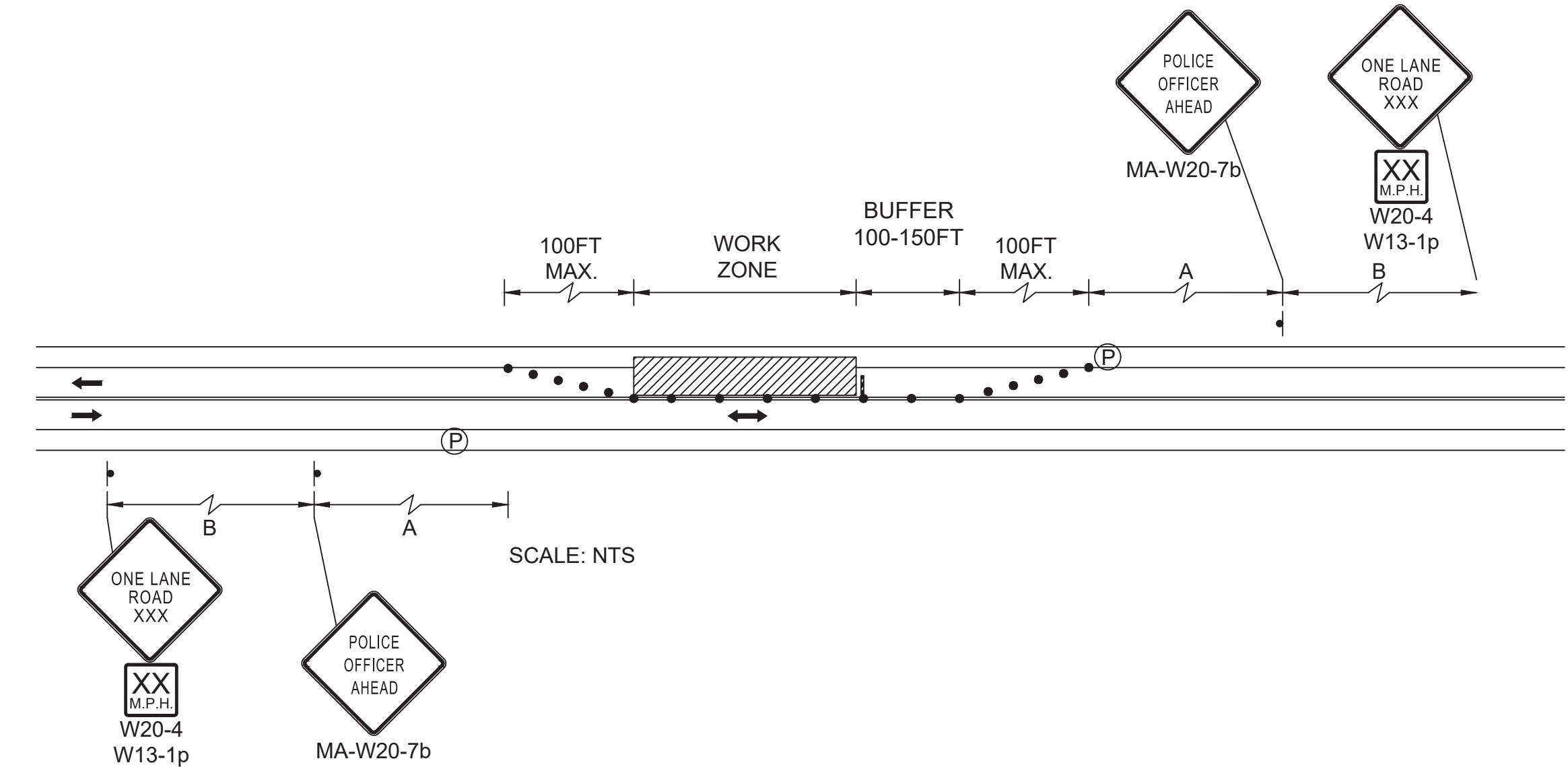
A00803 - 55

613004_BR63-57(BAREHILLTMP)DWG Plotted on 23-Dec-2022 2:18 PM Proposal No. 613004-121027 12-23-2022 PS&E Submittal (613004)

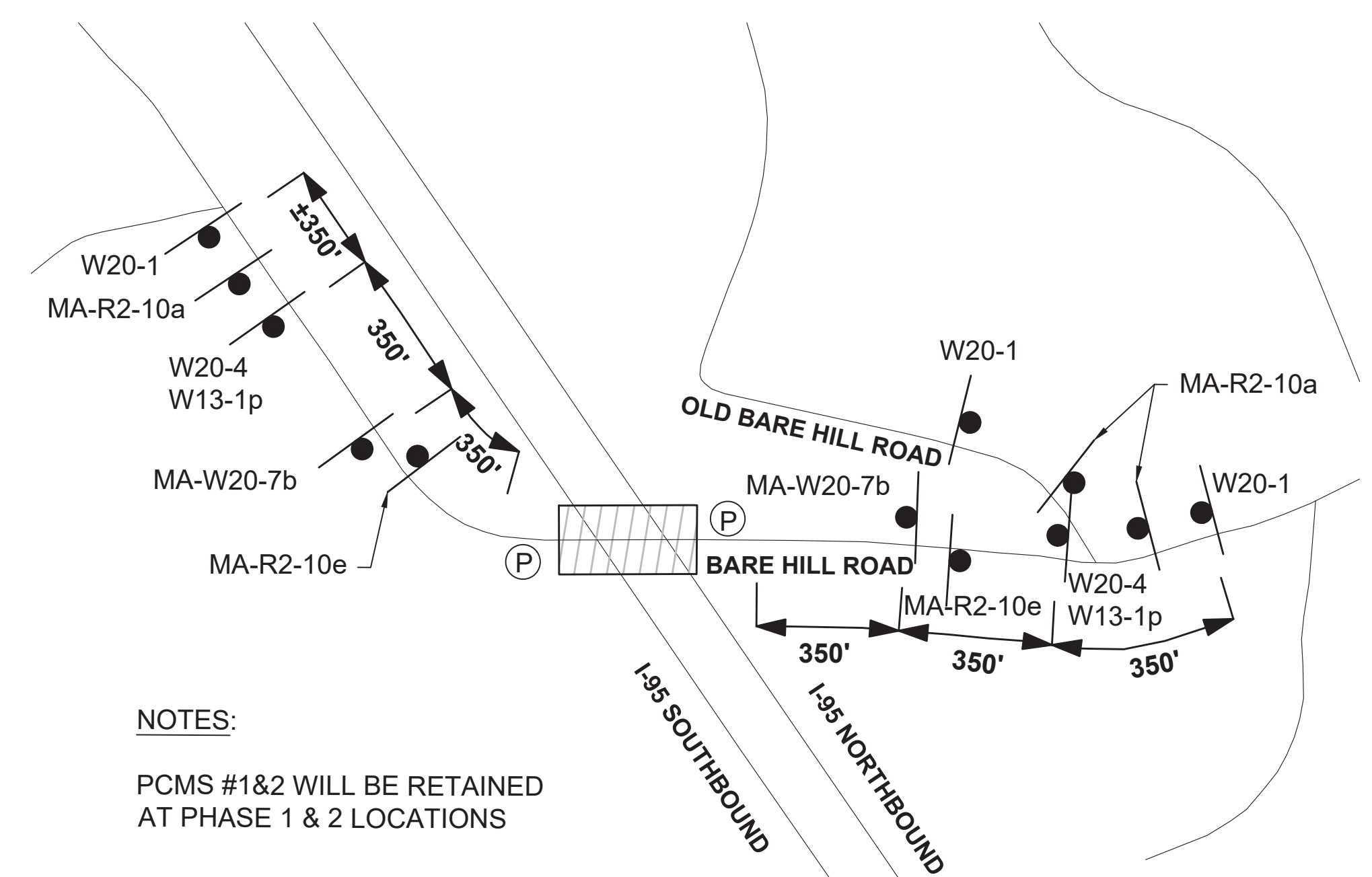
**BOXFORD-MERRIMAC-PEABODY
I-95 AND I-495 CORRIDORS**

STATE	FED. AID PROJ. NO.	SHEET NO.	TOTAL SHEETS
MA	NFA	54	74
PROJECT FILE NO.		613004	

**TEMPORARY TRAFFIC CONTROL PLANS
B-19-012 (2 OF 5)**



**PHASE 3 - ONE LANE ALTERNATING TRAFFIC WITH POLICE DETAIL
FOR GUARDRAIL RELATED WORK**



NOTES:
PCMS #1&2 WILL BE RETAINED
AT PHASE 1 & 2 LOCATIONS

ADVANCED SIGNAGE SCHEMATIC FOR PHASE 3

SCALE: 1" = 300'

MM/DD/YYYY	ISSUED FOR CONSTRUCTION
DATE	DESCRIPTION
USE ONLY PRINTS OF LATEST DATE	



ADVANCED SIGNAGE SCHEMATIC FOR PHASE 1 & PHASE 2 (TEMPORARY TRAFFIC SIGNAL)

SCALE: 1" = 300'

BRIDGE B-19-012 TOPSIDE GENERAL NOTES:

- ALL WORK ZONES FOR PHASE 1 AND 2 ARE ESTABLISHED FOR 24-HOURS A DAY DURING THE DURATION OF THE STAGE. TEMPORARY CONSTRUCTION SIGNING, BARRICADES, AND ALL OTHER NECESSARY WORK ZONE TRAFFIC CONTROL DEVICES SHALL BE REMOVED FROM THE HIGHWAY OR COVERED WHEN THEY ARE NOT REQUIRED FOR CONTROL OF TRAFFIC.
- ALL WORK ZONES FOR PHASE 3 ARE ESTABLISHED FROM 5:00 AM TO 7:00 PM (AS NEEDED) DURING THE DURATION OF THE STAGE. TEMPORARY CONSTRUCTION SIGNING, BARRICADES, AND ALL OTHER NECESSARY WORK ZONE TRAFFIC CONTROL DEVICES SHALL BE REMOVED FROM THE HIGHWAY OR COVERED WHEN THEY ARE NOT REQUIRED FOR CONTROL OF TRAFFIC.
- PHASE 3 SET UP SHALL BE UTILIZED FOR ANY SHOULDER / GUARDRAIL WORK THAT EXTENDS BEYOND THE PHASE 1 AND PHASE 2 BRIDGE REPAIR LIMITS. PHASE 3 SHALL NOT BE INSTALLED IN CONJUNCTION WITH PHASE 1 OR PHASE 2.
- PORTABLE CHANGEABLE MESSAGE SIGN (PCMS) SHALL BE IN PLACE 14 DAYS PRIOR TO THE INITIATION OF WORK.
- ALL DRUMS AND/OR CONES SHALL BE SET @ 20' O.C. MAX. UNLESS OTHERWISE NOTED OR ADJUSTED BY THE ENGINEER.
- REFER TO ADDITIONAL PROJECT WIDE GENERAL NOTES ON SHEETS 48 THROUGH 49.

TEMPORARY TRAFFIC CONTROL LEGEND

- WORK ZONE
- DIRECTION OF TRAVEL
- SIGN
- POLICE DETAIL
- TRAFFIC SIGNAL
- REFLECTORIZED PLASTIC DRUM OR 36" CONE
- PORTABLE CHANGEABLE MESSAGE SIGN (PCMS)

A00803 - 56

613004_BR63-57(BAREHILLTMP)DWG Plotted on 23-Dec-2022 2:18 PM

Proposal No. 613004-121027

12-23-2022

PS&E Submittal (613004)