

Communications



Public Safety Information Session

Emergency Medical Response

October 25, 2023

Communications- Warren Gould
Fire Department- Brian Geiger
Police Department- James Riter
Atlantic Ambulance- Rob White
Trinity Ambulance- Robert Thorne

Emergency Services

24/7
Emergency
Response



Communication

1 Director
4 Full-Time
7 Part-Time



Fire

1 Chief
4 Full-Time
34 Part-Time



Police

1 Chief
12 Full-Time
11 Part-Time

Communication Department Hours of Work



The Communication Department is staffed with professional 911 operators 24 hours a day, every day of the year.

They are responsible to answer the phones and notify police, fire, ambulance of an emergency.

They are qualified to assist a caller with basic first aid through directions over the phone.

Fire Department Hours of Work

The Fire Department responds 24 hours a day, every day of the year. We are a combination department consisting largely of a volunteer staff who respond via a pager system at the start of an emergency.



Fire Department Hours of Work



Full Time Firefighters

Monday-Friday 600am-600pm

Call Firefighters

Monday-Friday 600pm-600am

Saturday-Sunday 24 hours

On Duty Response

Monday-Friday 600pm-600am

Saturday-Sunday 24 hours

Police Department Hours of Work



The Police Department has at least 2 Police Officers on the roads of Boxford 24 hours a day, every day of the year.

During medical emergencies, police officers will initiate medical care until the fire department or ambulance arrives. They carry defibrillators, epi-pens and Narcan.

Communication Department Training Hours

80 Hours of Initial Professional Training

Basic Telecommunicator, Emergency Medical Dispatch and 911 Training

400-600 Hours In-House Hands On Training

Dispatching police and fire, handling emergency and non emergency phone calls, utilizing computer aided dispatch software, monitoring surrounding towns and state agencies radio networks, assisting emergency responders with various functions of their job

16 Hours of Continuing Education Each Year



Fire Dept. Training Hours



24 Hours First Responder Training

Patient Assessment, Medical Emergencies, Trauma Emergencies, Epi-Pen, Narcan, Report Writing and more

32 Hours Initial Fire Training

Turnout Gear, Fire Ground Operations, Fire Behavior, Search & Rescue, Hose Advancement, Ladders, Vehicle Extrication and more

Fire Dept. Training Hours

330 Hours at the Call Volunteer Academy

Includes Live Fire in Burn Building, Flashover Trailer, Ladders, Hazardous Material

120 Hours of an Accredited EMT Basic

Focused patient assessment, trauma assessment, medications, and more.

Requires 40 hours EMS training every two years

Members participate in regular Monday night trainings during the year (80 hrs.)



Police Dept. Training Hours



24 Hours First Responder Training

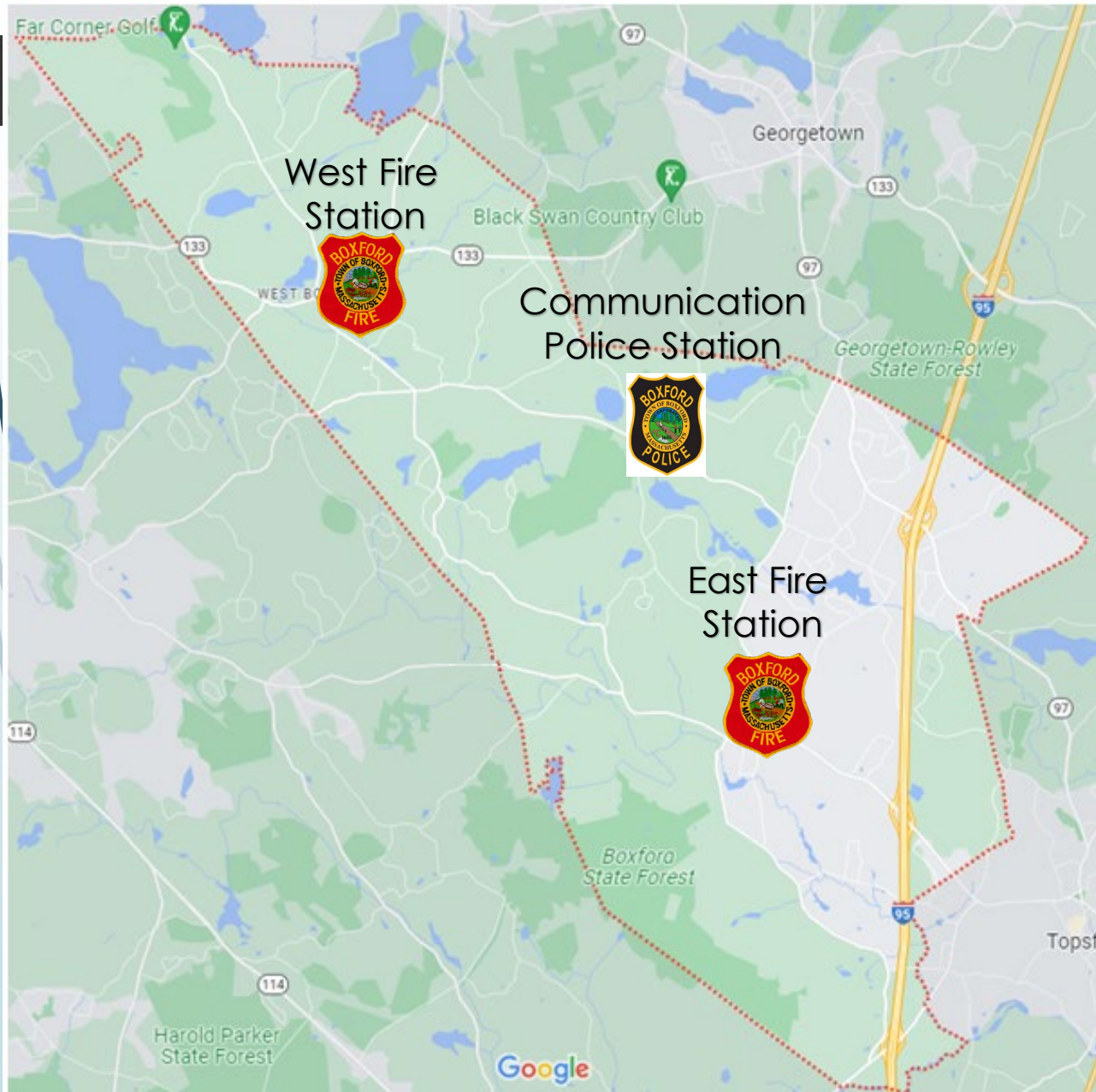
Patient Assessment, Medical Emergencies, Trauma Emergencies, Epi-Pen, Narcan, Defibrillator

960 Hours Police Academy

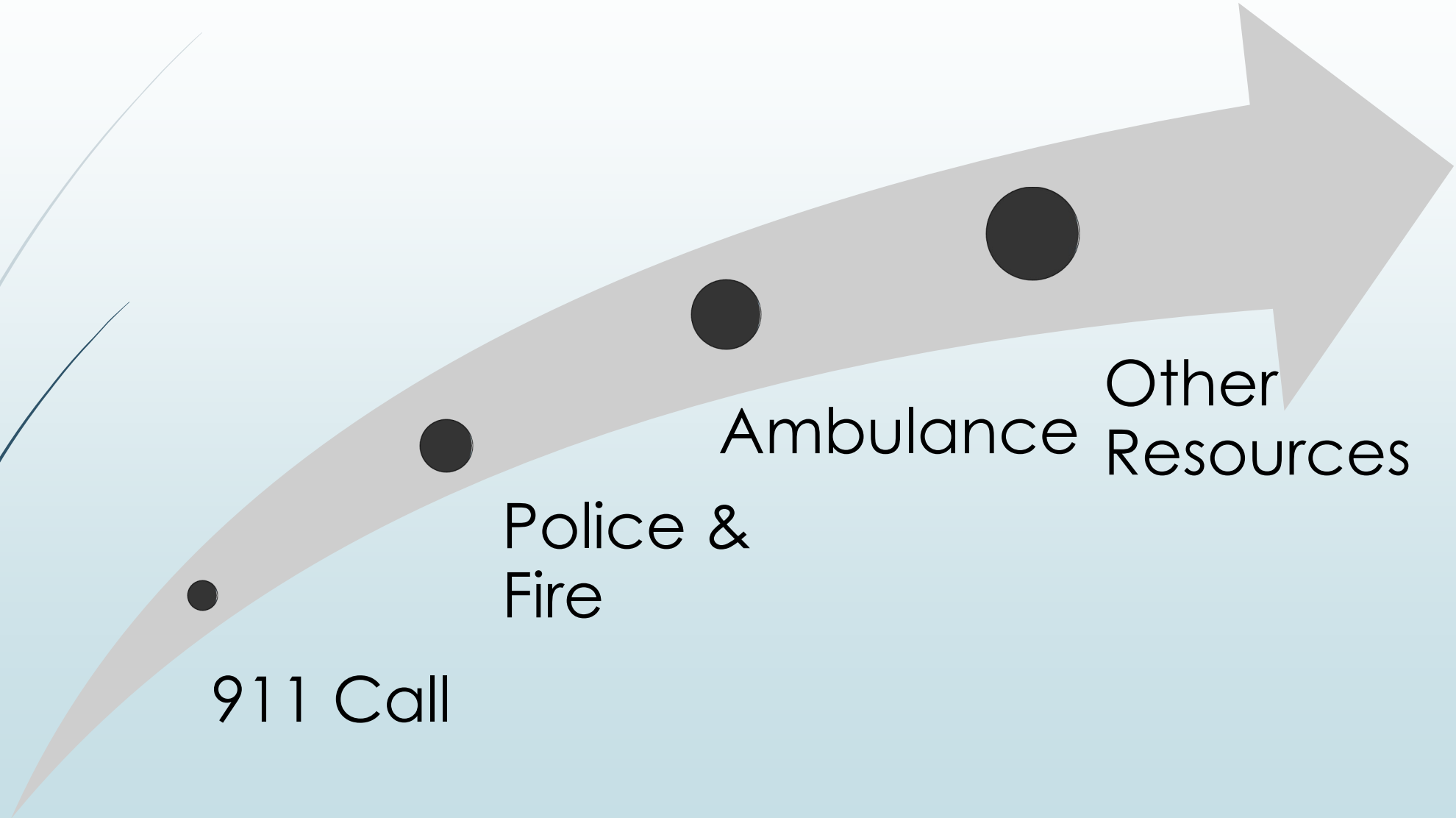
Police procedures, motor vehicle laws, investigation, fire arm training,

Boxford Massachusetts 24.4 square miles

- Far Corners to Masco is 12 Miles or 20 Minutes
- West Fire to East Fire is 6 Miles or 11 Minutes
- East Fire to Masco is 4 Miles or 7 Minutes
- West Fire to Spofford is 3.3 Miles or 7 Minutes
- East Fire to Far Corners is 8 Miles or 15 Minutes



3 Tier Response

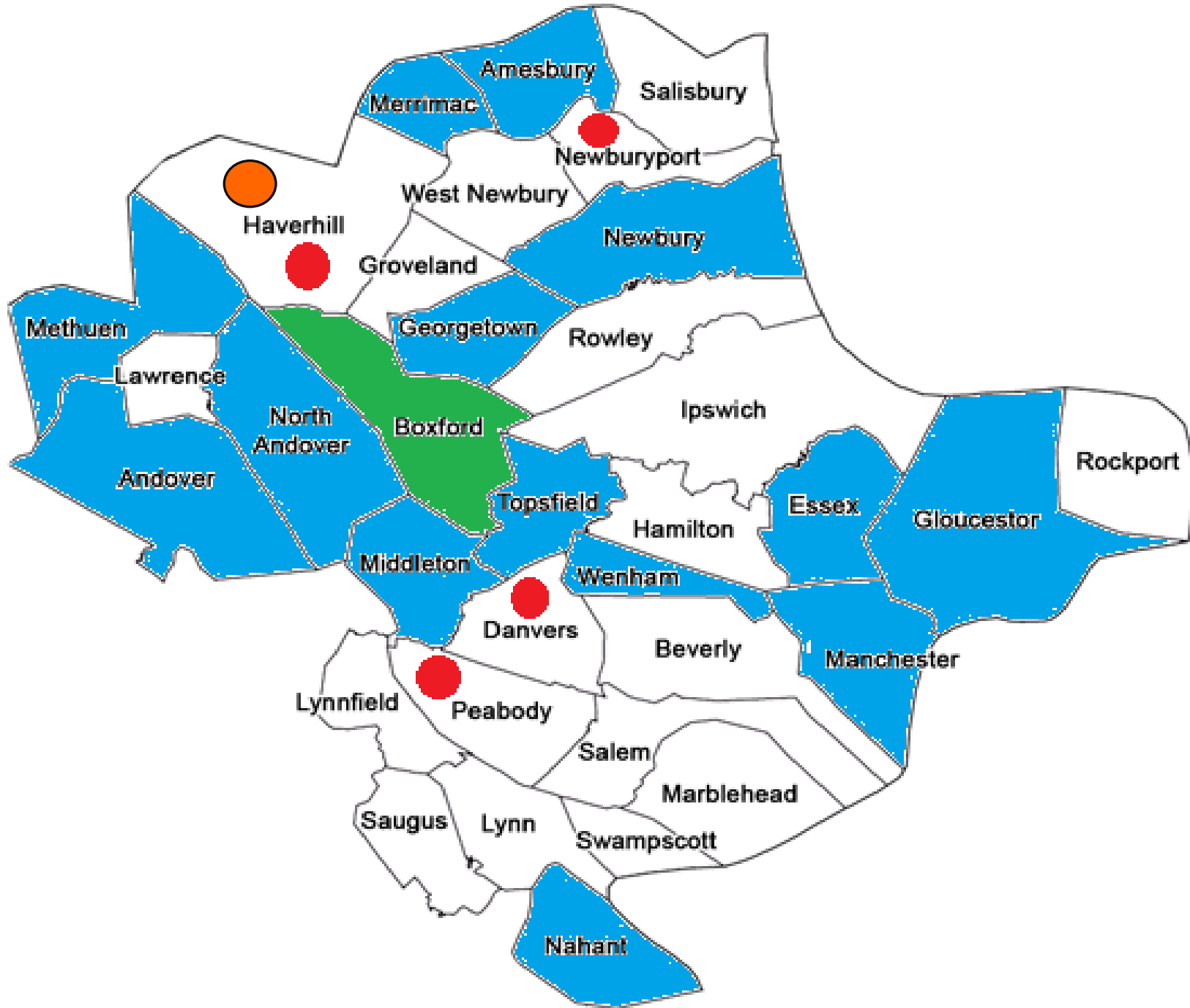


Essex County

FIRE DEPT
AMBULANCES

PRIVATE
CONTRACTED
AMBULANCES

- Atlantic
- Trinity





What is BLS and ALS?

Basic Life Support

- ▶ BLS EMTs can assess and manage patient care for a variety of emergencies
- ▶ Most emergency calls receive a BLS staff
- ▶ Boxford Fire Department is classified as an Emergency First Responder operating at the Basic Life Support level non transporting ambulance

Advance Life Support

- ▶ ALS EMTs are known as Paramedics
- ▶ Paramedics can start an IV, administer various drugs and use an EKG to analyze heart rhythms.
- ▶ Paramedics are dispatched for the most severe medical or trauma emergencies
- ▶ Atlantic and Trinity/ Pridestar provide ALS, BLS, and transport services for the Town

Atlantic/ Cataldo Ambulance

35 Maple Street, Danvers

497 Lowell Street, Peabody

18 Graf Road, Newburyport

242 Neck Road, Haverhill

ALS Supervisors

23 ALS Units

86 BLS Units

Certified Paramedic & EMT School



Trinity/ PrideStar

7 Stewart Street, Haverhill



Mobile Tracking Software

3 Paramedic Units 24/7

1 ALS Supervisor 24/7

1 ALS Supervisor 7A-11P (M-F)

1 Advance or Basic Unit 24/7

1 Advance or Basic Unit 7A-11P (7 days a week)

1 Advance or Basic Unit 7A-11P (M-F)

Boxford EMS Abilities



- ▶ The Boxford Fire Department is classified as an Emergency First Responder operating at the Basic Life Support level non transporting ambulance
- ▶ We follow the Massachusetts State Treatment Protocols and managed/monitored by Beverly Hospital
- ▶ We dedicate at least 20 hours per year on medical training

Boxford EMS Abilities - Respiratory



Treating Respiratory Emergencies

We can assist a patient with their prescribed inhaler.

We can administer:

- ▶ Albuterol,
- ▶ Oxygen,
- ▶ Airway Adjuncts
- ▶ Epinephrine (pediatric only)
- ▶ CPAP machines

Albuterol

NDC 0487-9904-25

1.25 mg* / 3 mL

Albuterol Sulfate
Inhalation Solution, 0.042%*


1.25 mg* / 3 mL

* Potency expressed as albuterol, equivalent to 1.5 mg albuterol sulfate.

Sterile PREDILUTED with normal saline.

FOR ORAL INHALATION ONLY

INGREDIENTS:
Active: Albuterol sulfate (1.5 mg / 3mL).
Inactive: Sodium chloride, sulfuric acid (to adjust pH between 3 and 5) and water for injection.

 nephron
pharmaceuticals
corporation
Orlando, FL 32811

Rx Only
25 x 3 mL Sterile Unit-Dose Vials, each in a foil pouch.

NDC 0487-9904-25
Albuterol Sulfate
Inhalation Solution
0.042%*
1.25 mg* / 3 mL
Potency expressed as albuterol, equivalent to 1.5 mg albuterol sulfate.
FOR ORAL INHALATION ONLY
SEE BACK OF POUCH FOR PATIENT'S INSTRUCTIONS.
Each 3 mL vial contains:
Active: Albuterol sulfate 1.5 mg
Inactives: Sodium chloride, sulfuric acid (to adjust pH between 3 and 5) and water for injection.
STORAGE CONDITIONS: PROTECT FROM LIGHT. Store between 2° and 8°C (36° and 77°F). Store the unit-dose vial in the protective foil pouch at all times. Once removed from the foil pouch, use the vial within one week. Discard the vial if the solution is not colorless. Keep out of reach of children.
USUAL DOSAGE: For use in children ages 2-12, see accompanying prescribing information. USE ONLY AS DIRECTED BY YOUR PHYSICIAN. DO NOT EXCEED RECOMMENDED DOSAGE.
Rx Only
STERILE
One 3 mL Unit-Dose Vial

Oxygen



Airway Adjunct



Epinephrine



CPAP



Boxford EMS Abilities - Cardiac Emergencies

We can assist a patient with their prescribed nitroglycerin



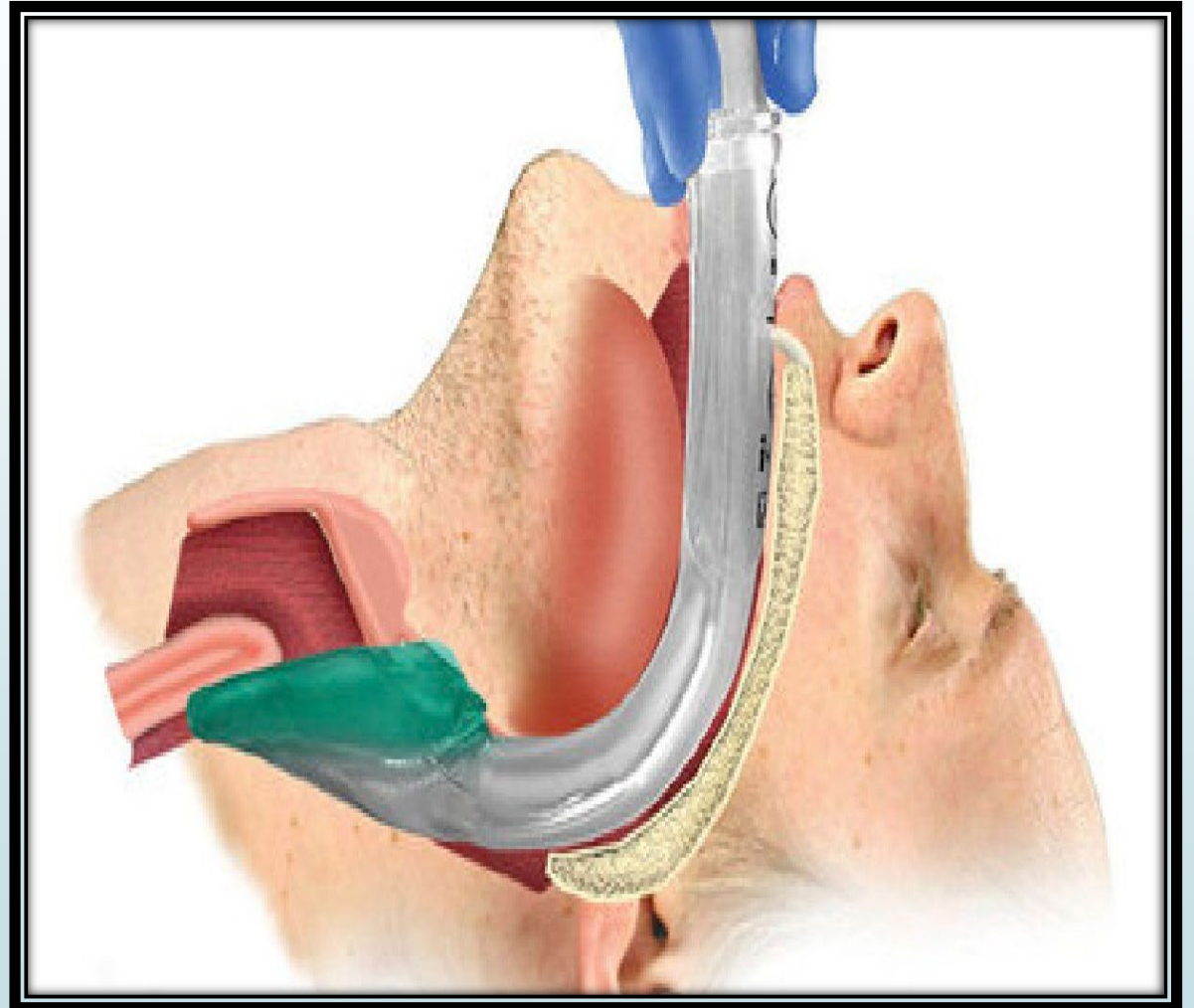
We can do:

- ▶ Administer Aspirin
- ▶ Insert an airway device,
- ▶ Administer defibrillators (AED)
- ▶ Administer CPR (machines purchased)

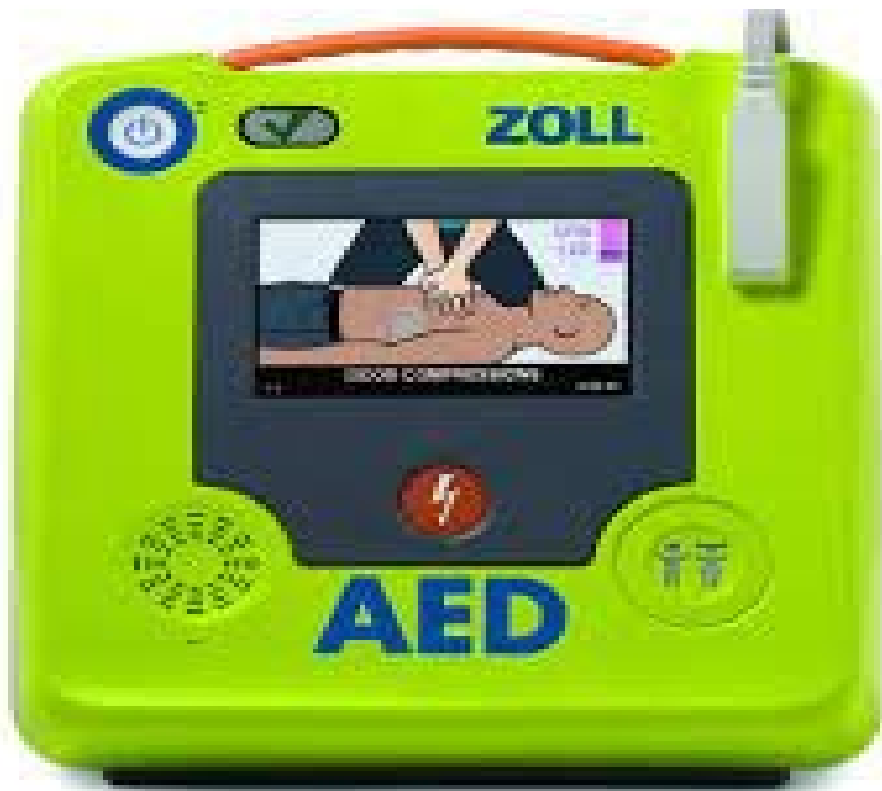
Aspirin



Supraglottic Airway



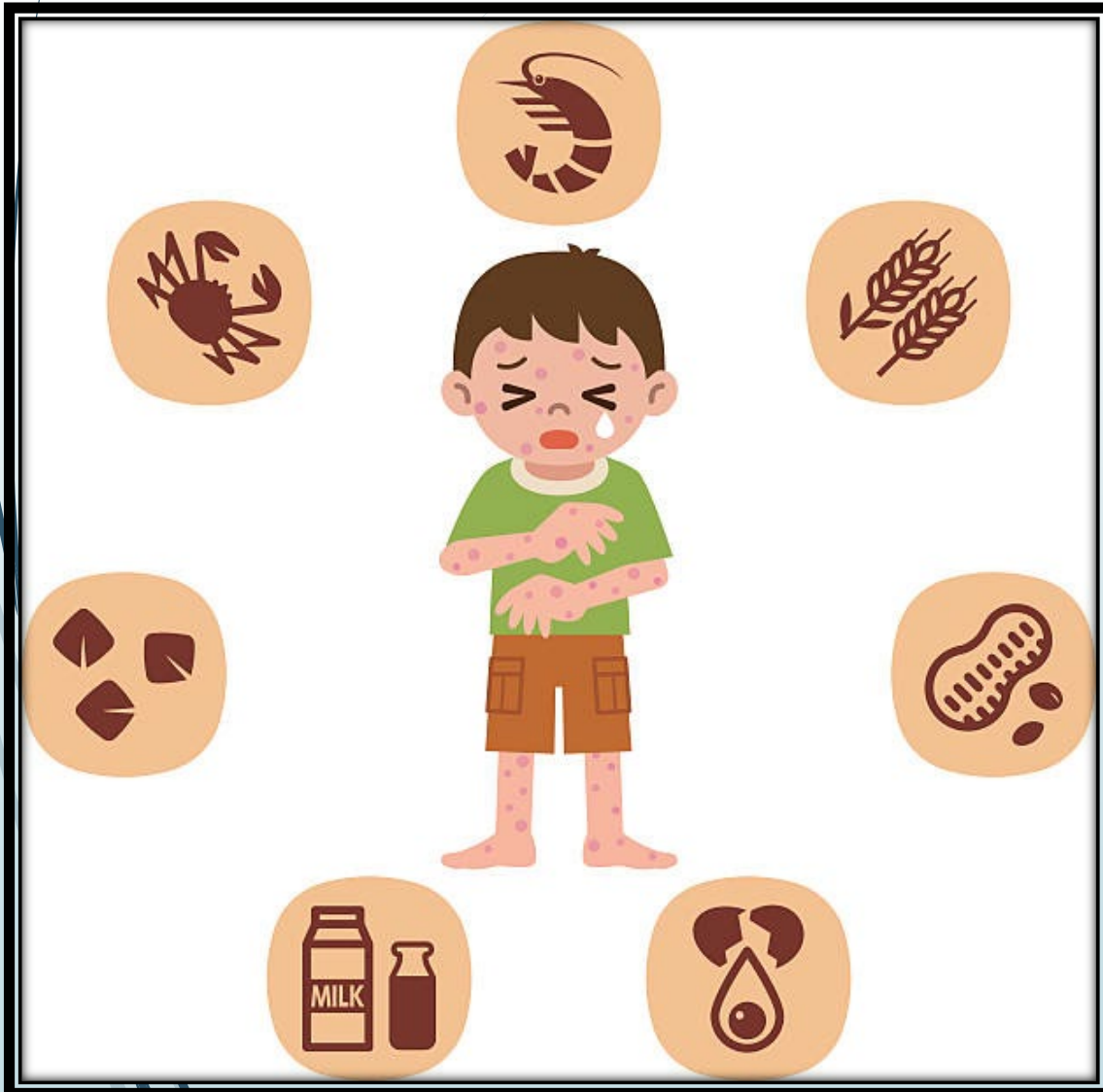
Defibrillator



Lucas CPR Machine



Boxford EMS Abilities – Allergic Reactions



We can administer:

- ▶ Epinephrine to adults,
- ▶ Epinephrine to children
- ▶ Benadryl.

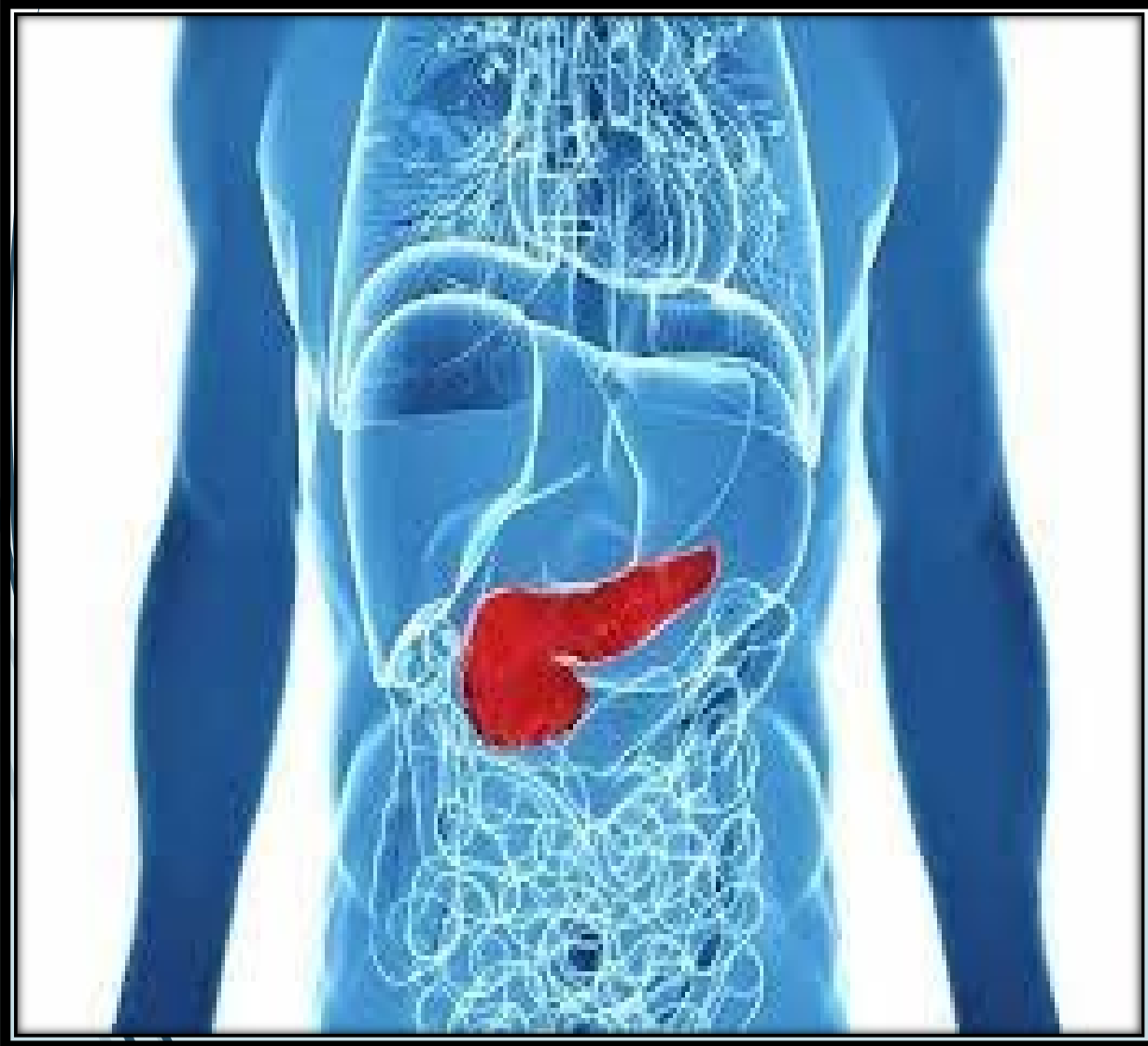
Epinephrine



Benadryl



Boxford EMS Abilities – Diabetes Treatment



We can administer:

- ▶ glucose
- ▶ glucagon

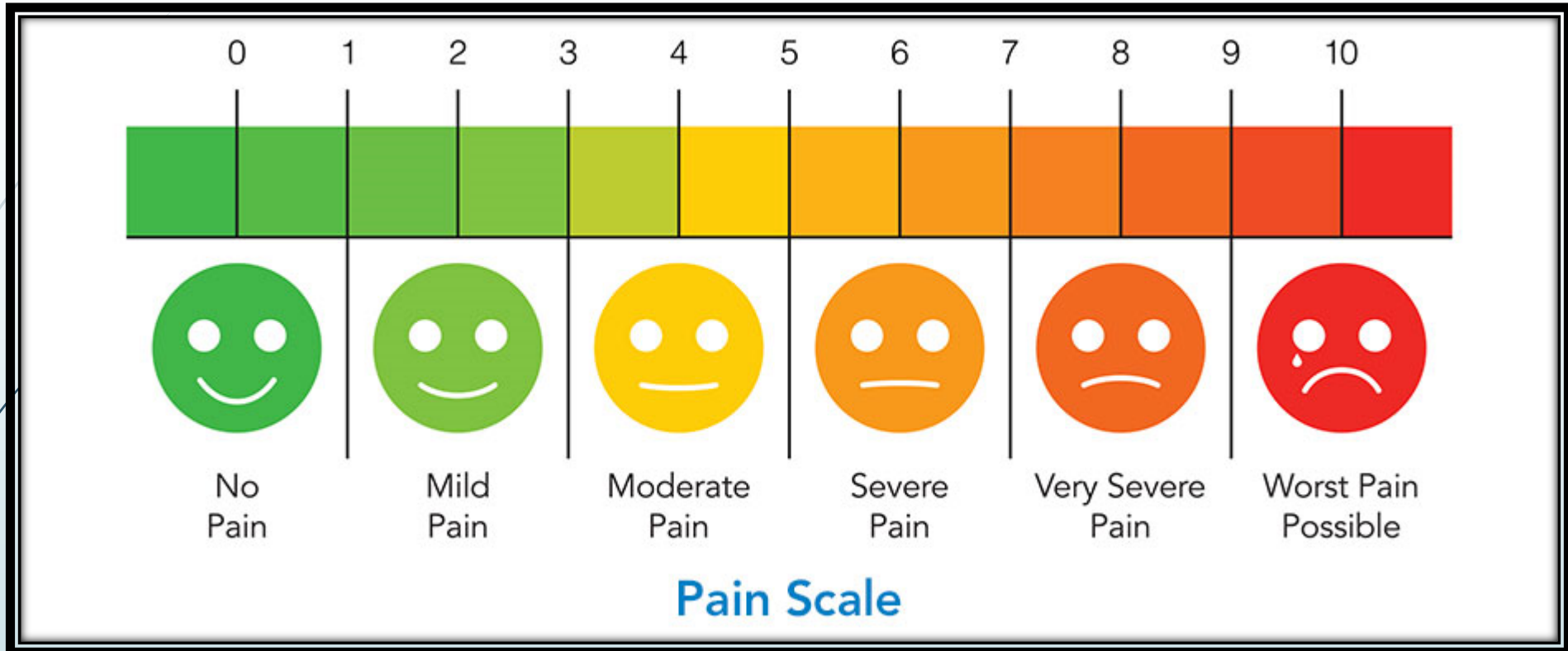
Glucose



Glucagon



Treating Pain



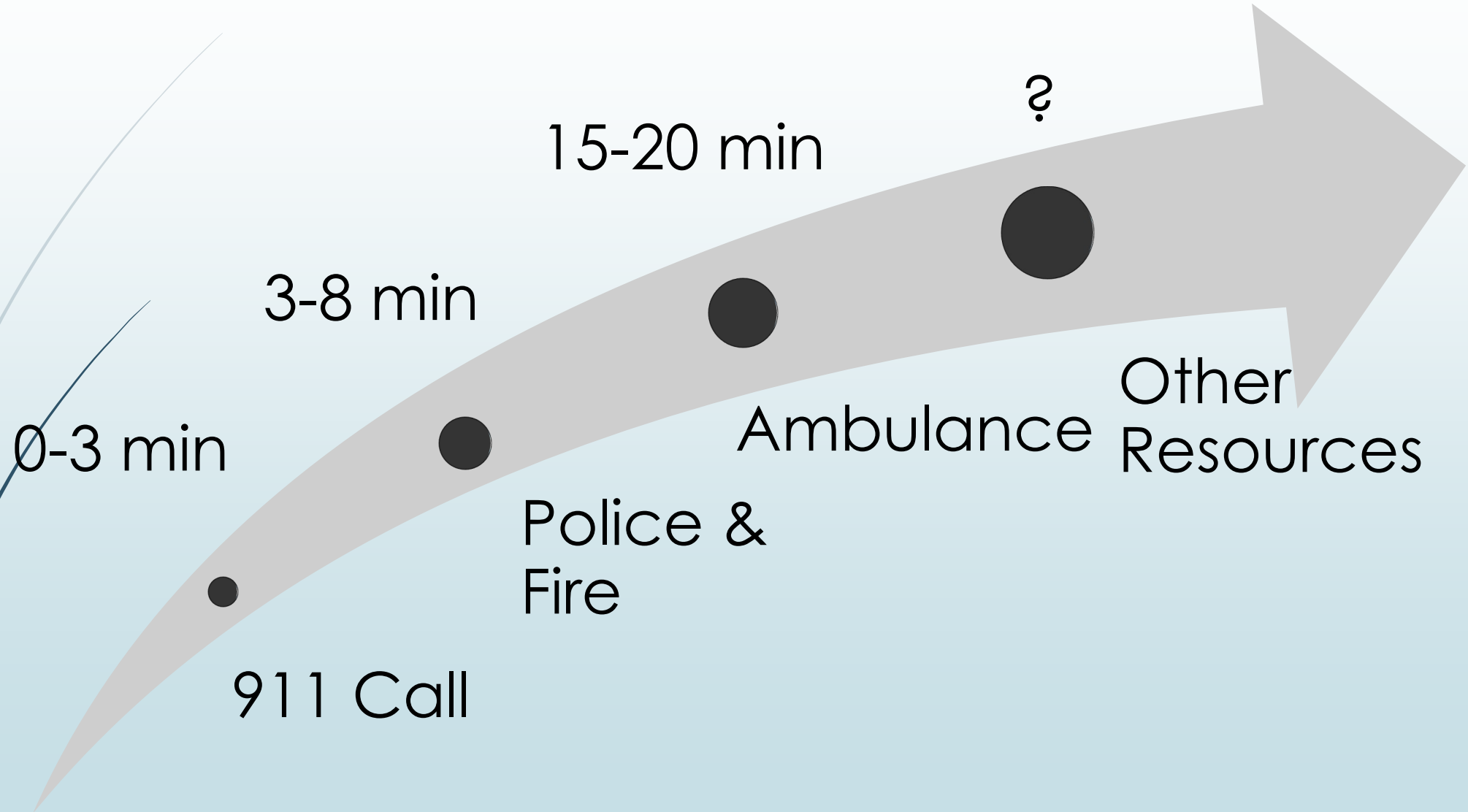
We can administer Ibuprofen or Acetaminophen

Boxford EMS Abilities – Overdose Treatment



We can administer Narcan

3 Tier Response



Questions?

