



# Boxford Community Electricity

April 23, 2024



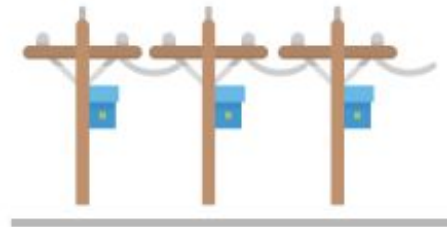
# Electricity Aggregation



**SUPPLY**

Boxford chose Dynegy to supply the electricity for anyone that participates in Boxford Community Electricity.

+



**DELIVERY**

National Grid delivers the electricity to your home, maintains power lines, and responds to power outages.

=



**POWER FOR YOU**

You continue to pay a single bill to National Grid. No changes to solar benefits, low-income, discounts, or budget billing.



# Purpose

Offer new electricity supply options that provide more renewable energy and stable prices for all Boxford residents and businesses.

Although savings cannot be guaranteed, these programs have historically provided savings compare to National Grid Basic Service over the contract term.



# Our Electricity Supplier

Boxford chose Dynegy as its electricity supplier, and will offer three supply options.

Program starts June 2024 and prices are fixed for 42 months.



# What Changes

Participation in Boxford Community Electricity will only change the “Supply” portion of your National Grid electricity bill.







# What Stays the Same

- The “Delivery” portion of your National Grid bill will remain the same.
- National Grid will still continue to deliver electricity, maintain poles and wires, and respond to storm outages
- You will still pay just one bill to National Grid
- Anyone using budget billing or receiving low-income rate discounts will continue to receive their current benefits.
- Customers receiving net metering or other solar benefits will continue to receive their current benefits.



# Our Program Options

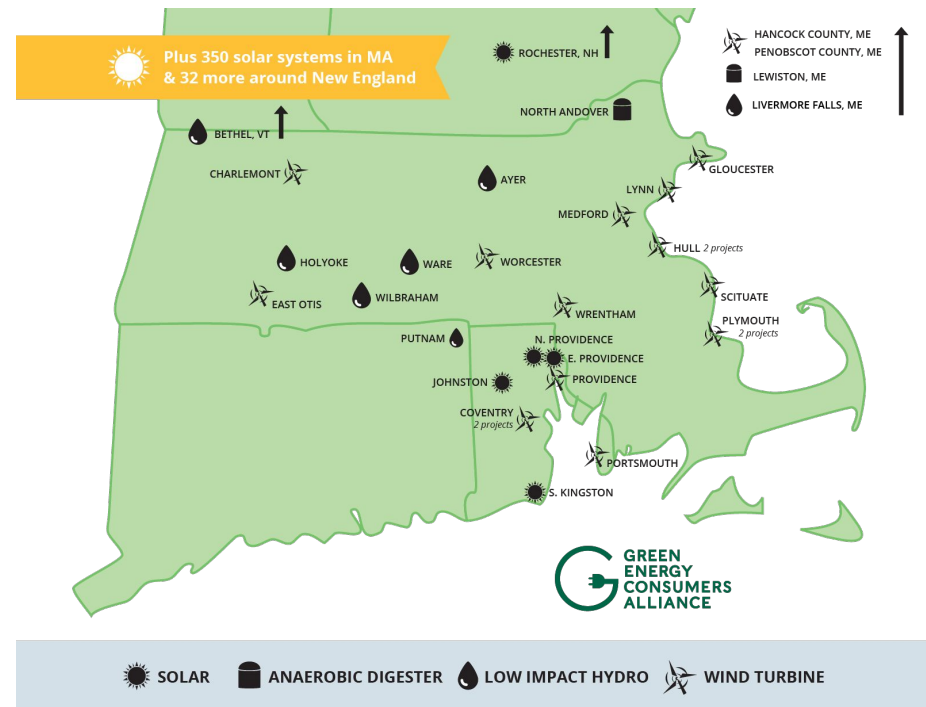
 <b>Boxford Standard</b> (community default)	 Boxford Basic	 Boxford 100	 National Grid Basic Service Residential
13.915 ¢/kWh	13.502 ¢/kWh	14.853 ¢/kWh	18.213 ¢/kWh
Adds 10% voluntary renewable energy (MA Class I RECs)	No additional renewable energy	Adds voluntary renewable energy (MA Class I RECs) to total 100%	No additional renewable energy
June 2024 through December 2027			November 1, 2023 through July 31, 2024

Future savings compared to utility Basic Service cannot be guaranteed.



# Our Voluntary Renewables

- Come only from Class I sources, the State's term for new, in-region renewables
- From wind, solar, low-impact hydro and anaerobic digestion in New England
- Class I preferred by MA Dept. of Energy Resources because it supports the growth of additional renewables

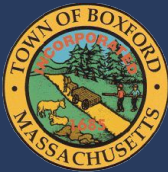






# Participation & Enrollment

- Participation is voluntary.
- There is never any penalty or fee to opt out of the program.
- The enrollment process differs based on your current electricity supplier.



# How To Find Your Current Supplier

The screenshot shows a National Grid utility bill. At the top left is the 'nationalgrid' logo. To its right is a 'SERVICE FOR' field with a placeholder 'Street, City, State, Zip'. Further right, the 'BILLING PERIOD' is 'Nov 7, 2019 to Dec 9, 2019'. Below that, the 'ACCOUNT NUMBER' is '123456789' and the 'PLEASE PAY BY' date is 'Feb 3, 2020'. The 'AMOUNT DUE' is '\$ 34.93'. The page is labeled 'PAGE 2 of 2'. In the main body of the bill, the 'Supply Services' section is circled in red. It lists 'SUPPLIER National Grid' and a table of charges:

Service	Quantity	Rate	Amount
Basic Service Fixed	0.1216 x 118 kWh		14.35
<b>Total Supply Services</b>			<b>\$ 14.35</b>

At the bottom, there are two sections: 'Explanation of General Billing Terms' and 'Delivery Service Charges are comprised of:'. The 'Explanation of General Billing Terms' includes definitions for 'KWH' (Kilowatt-hour) and 'Off-Peak'. The 'Delivery Service Charges' section includes a 'Customer Charge' definition.



# Customers on Basic Service (Part 1)

- Anyone using National Grid Service is eligible to be automatically enrolled in the Boxford Standard as of their June meter read.
- These customer received a notification letter in mid-April, explaining their options.
- If an eligible customer takes no action, they will be enrolled in Boxford Standard starting in June.



# Customers on Basic Service (Part 2)

If eligible for automatic enrollment:

- May 15: deadline to opt-out before the program starts.
- You may opt-out at any time after May 15, and you will be returned to National Grid Basic Service supply on your next meter read.
- There is never any penalty or fee to opt out of the program.



# Customers on Basic Service (Part 3)

## To Choose a different Boxford option:

Fill out the online form at [BoxfordElectricity.com](http://BoxfordElectricity.com) OR call our supplier, Dynegy, at (866) 220-5696

## To Opt Out of the Boxford Program:

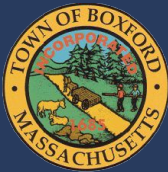
Return the postage paid card in your notification letter OR fill out the online form at [BoxfordElectricity.com](http://BoxfordElectricity.com) OR call our supplier, Dynegy, at (866) 220-5696



# Customers Using Their Own Supplier

Anyone currently using their own supplier will not receive the notification letter and will not be automatically enrolled.

These customers can voluntarily join the program, but should check with their current supplier in case their current supplier charges penalties or early termination fees.



# Sample Bill Showing Boxford Community Electricity

**nationalgrid**

SERVICE FOR  
[REDACTED]  
ESSEX MA 01929

Supply information will  
be on the second page of  
your National Grid Bill

PAGE 2 of 2

ACCOUNT NUMBER [REDACTED] PLEASE PAY BY AMOUNT DUE  
Apr 2, 2022 \$ 70.53

**Choosing an Energy Supplier** You can choose who supplies your energy. No matter which energy supplier you choose, National Grid will continue to deliver energy to you safely, efficiently and reliably. We will also continue to provide your customer service, including emergency response and storm restoration. National Grid is dedicated to creating an open energy market that lets you choose from a variety of competitive energy suppliers, who may offer different pricing options. For information on authorized energy suppliers and how to choose, please visit us online at [ngrid.com/ma-energychoice](http://ngrid.com/ma-energychoice)

Customer Charge			10.00
Dist Chg	0.06868275	x 249 kWh	17.10
Transition Charge	-0.00098569	x 249 kWh	-0.24
Transmission Charge	0.03035571	x 249 kWh	7.56
Energy Efficiency Chg	0.00938	x 249 kWh	2.33
Renewable Energy Chg	0.0005	x 249 kWh	0.12
Distributed Solar Charge	0.0036	x 249 kWh	0.90
Electric Vehicle Charge	0.00046	x 249 kWh	0.11
<b>Total Delivery Services</b>			<b>\$ 37.88</b>

### Supply Services

SUPPLIER National Grid

Supplier will be listed as  
Boxford Community  
Electricity - Dynegey

Basic Service Fixed	0.13113	x 249 kWh	32.65
<b>Total Supply Services</b>			<b>\$ 32.65</b>

Rate will be:  
Standard: 0.13915  
Basic: 0.13502  
or Plus: 0.14853

### Explanation of

**KWH:** Kilowatt-hour,  
**Off-Peak:** Period of  
electricity on the Co

amount of electricity you use.  
**Distribution Charge:** The cost of delivering electricity  
from the beginning of the Company's distribution system  
to your home or business.  
**Transition Charge:** Company payments to its wholesale



# Questions & Support

**To opt-out, change your option or proactively enroll:**

- Call Dynegy at (866) 220-5696
- Fill out the enroll or opt-out form at [BoxfordElectricity.com](http://BoxfordElectricity.com)

**For questions, contact Boxford's consultant, Good Energy:**

- Call (978) 216-2838
- Fill out the contact form at [BoxfordElectricity.com](http://BoxfordElectricity.com)

**Reminder: you may change your option or opt-out of the program at any time**





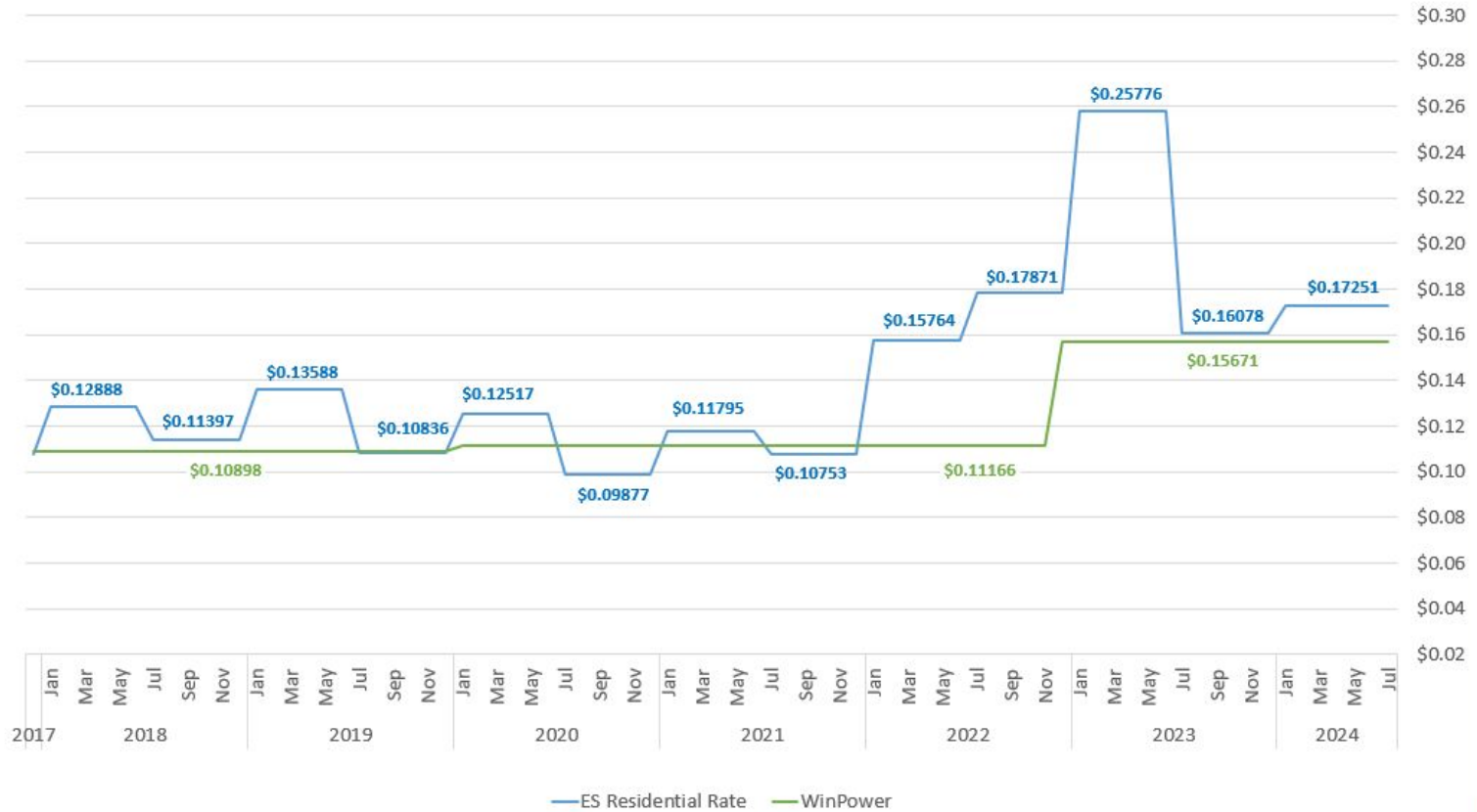
# Our Pre-Launch Awareness

In addition to the notification letter, we have spread the word through:

- Press release and online news blurb
- Social media posts
- Notice running on Local Cable access TV
- Brochures Town Hall, Library, and The Center at 10 Elm
- Postcard sent to all eligible customers



WinPower Standard vs Eversource Residential Basic Service Rate



**Future savings cannot be guaranteed because Basic Service rates change every six months for residential and commercial customers and every three months for industrial customers.**