



Wetland Consulting Services

September 18, 2018

Mr. Ross Povenmire
Boxford Conservation Commission
7A Spofford Road
Boxford, MA 01921

WCS Proj #: Boxford-27

RE: Request form Determination, Guardrail Replacement, Georgetown Road

Dear Ross and Commissioners:

The Boxford DPW plans to replace 8 degraded or failing guardrails along the southern end of Georgetown Road just north of Ipswich Road (see Photo A). This work is proposed for the Fall of 2018. Eight sections of guardrail would be replaced. The locations of these guardrails are shown on Figure 1. Bordering Vegetated Wetlands (BVW) lie below the guardrails at the road toe of slope at 7 of the 8 locations.

As part of this application, the following information is also being provided:

- a) RDA Form 1
- b) Figure 1 aerial photo shows location of guardrails to be replaced
- c) Figure 2 NHESP map of the project area showing rare habitat and vernal pools
- d) Figures 3 and 4 a sketch of the various wetlands delineated
- e) Photo A example of a guard rail requiring replacement
- f) Photos C thru J showing each guardrail to be replaced and adjacent wetland
- g) Request to waive local filing fee requirement
- h) Certified abutter's list
- i) Affidavit of Service

On November 5, 2017, Wetland Consulting Services (WCS) flagged the 7 wetlands located below each of the guardrails. The criteria¹ used to identify the edge of the vegetated wetlands corresponds with the procedures used to delineate a Bordering Vegetated Wetlands (BVW) resource area pursuant to 310 CMR 10.55 (2) and the Boxford Wetlands By-law. Figures 2 and 3 shows the approximate location of the delineated wetlands and the flag numbers used to identify the edge of the various wetlands. Each of the flagged wetlands lie at the toe of slope of the road.

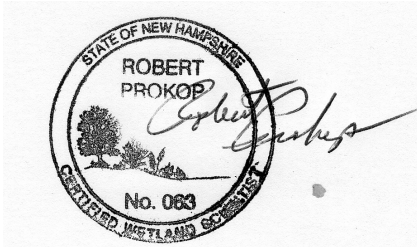
Upon review of Natural Heritage data, 4 certified vernal pools lie in or near the project area. Three vernal pools lie within 50' +/- of the guardrails. Their locations are highlighted on Figure 4. Priority habitat associated with Stevens Pond also lies near the project.

¹Delineating Bordering Vegetated Wetlands under the Massachusetts Wetlands Protection Act: a Handbook. March 1995. Produced by the Mass. DEP, Div of Wetlands and Waterways.

The existing cable and concrete post guardrails would be replaced with cortten steel rails with pressure treated posts. The rails would be tinted to maintain a rural character (see Photo B-1). Where bordering slopes are excessively steep, pressure treated posts would be replaced with tinted cortten steel I-beam posts (see Photo B-2). The contractor would decide which posts are most appropriate for each site. Posts would be pile driven into the ground. No wetland impacts are proposed, but some herb and shrub vegetation clearing is likely where the old guardrails are removed and the new guardrails would be installed. No erosion control is proposed since this installation would require unnecessary vegetation clearing and ground disturbance on very steep slopes.

Hopefully, the Commission has sufficient information to make a determination on this application. If you have any questions or require any additional information at this time, please feel free to contact me at 978-346-9857 or John Dold at 978-375-1711.

Sincerely,
Wetland Consulting Services,



Robert Prokop
Wetland Scientist/Wildlife Biologist

CC: John Dold, Boxford DPW



Photo A. Example of one of the eight guardrails proposed for repair and replacement. This particular guardrail is located on the western side of Georgetown Road just south of Hillside Road. The wetland with the “G” labeled flags lies at the road toe-of-slope. Photo taken by B. Prokop on 11/05/17.



Photo B-1. Example of guardrail with pressure treated post. Guradrail installed off Middleton Road. Photo taken by B. Prokop on 09.17.18.



Photo B-2. Example of guardrail with corttel I-beam posts. Photo taken by B. Prokop on 09.17.18.



Figure 1. Georgetown Road just north of Ipswich Road where 8 guardrails are proposed for replacement. The various flagged wetlands (in letters) located below the guardrails are also shown.

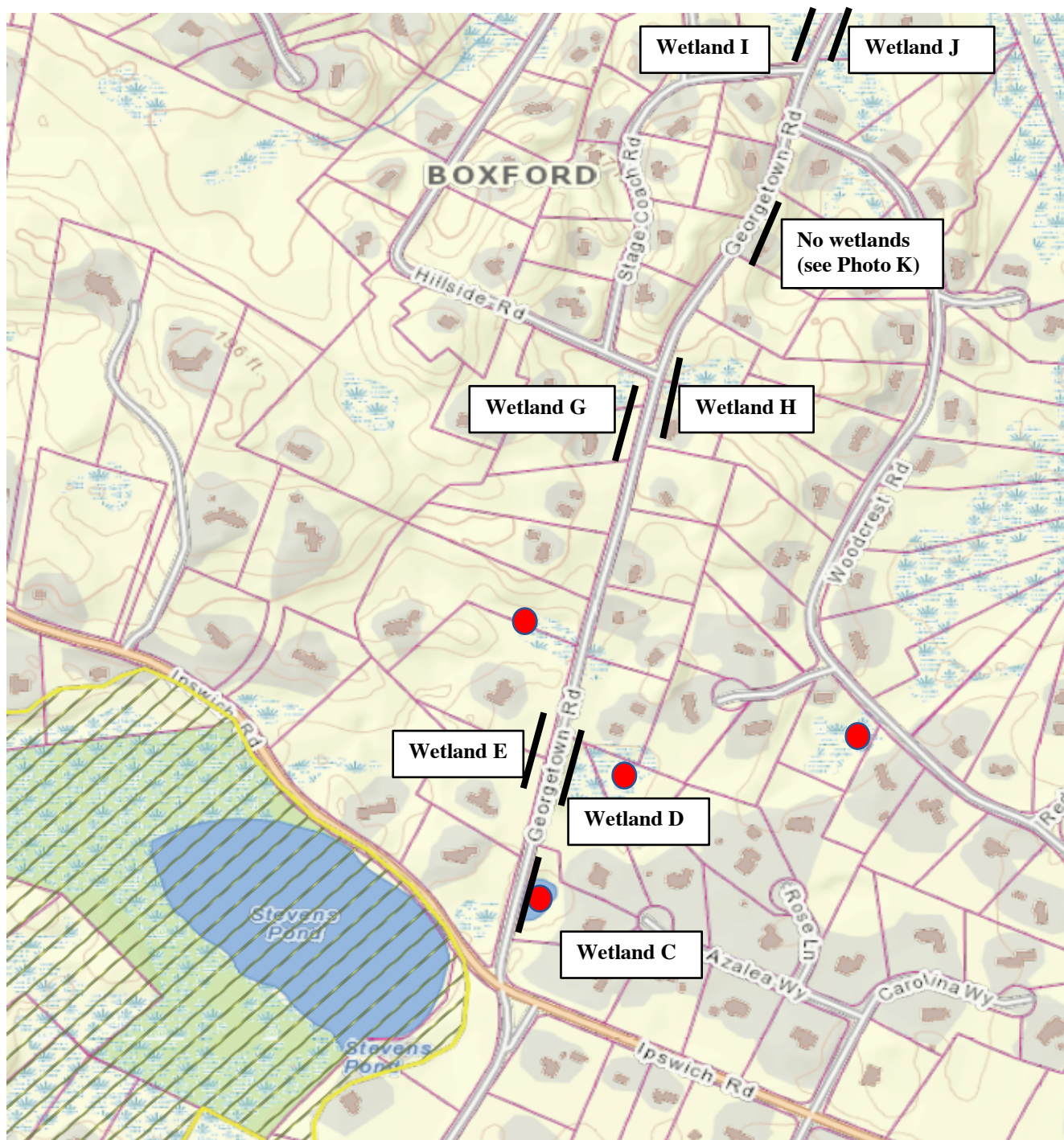


Figure 2. NHESP map showing the location of priority habitat and various vernal pools along the project area. Guard rail locations are shown in black, vernal pools in red along with the numbered flagged wetlands.



Figure 3. Sketch of wetlands C, D and E in relation to the other delineated wetlands.

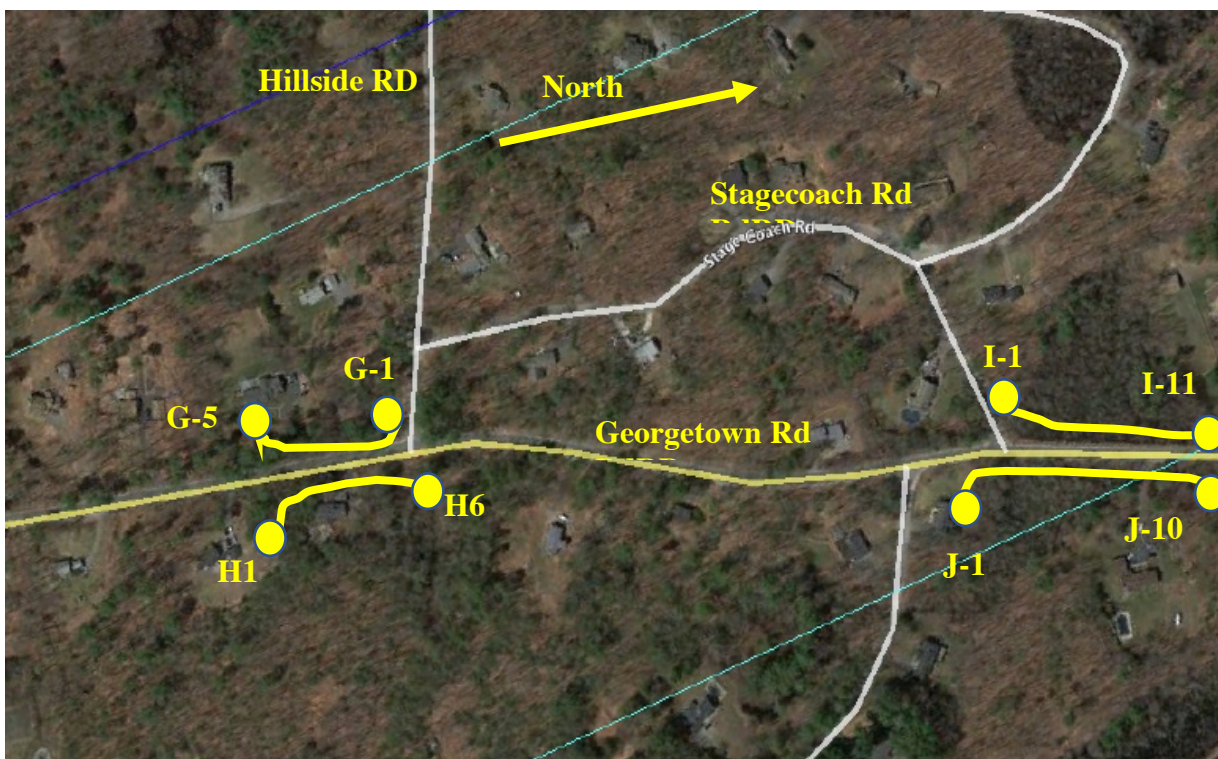


Figure 4. Sketch of wetlands G through J in relation to the other delineated wetlands.



Photo C-1. Southerly view of guardrail adjacent to wetland C. Photo by B. Prokop 11/5/17.



Photo C-2. Vernal pool located approximately 40 ft from guardrail at wetland C. Photo by B. Prokop 11/5/17.



Photo D-1. Northerly view of guardrail adjacent to wetland D. Photo by B. Prokop 11/5/17.



Photo D-2. Vernal pool located approximately 30 ft from guardrail by wetland D. Photo by B. Prokop 11/5/17.



Photo E. Northerly view of guardrail adjacent to wetland E. Photo by B. Prokop 11/5/17.



Photo G-1. Southerly view of guardrail adjacent to wetland G. Photo by B. Prokop 11/5/17.



Photo G-2. Northerly view of guardrail adjacent to wetland G. Photo by B. Prokop 11/5/17.



Photo H. Southerly view of guardrail adjacent to wetland H. Photo by B. Prokop 11/5/17.



Photo I-1. Southerly view of guardrail adjacent to Wetland I. Photo by B. Prokop 11/5/17.



Photo I-2. View of guardrail adjacent to Wetland I. Photo by B. Prokop 11/5/17.



Photo J. Southerly view of guardrail adjacent to Wetland J. Photo by B. Prokop 11/5/17.



Photo K. Southerly view of guardrail adjacent to 201 Georgetown Road. No wetlands exist near this guardrail. Photo by B. Prokop 11/5/17.