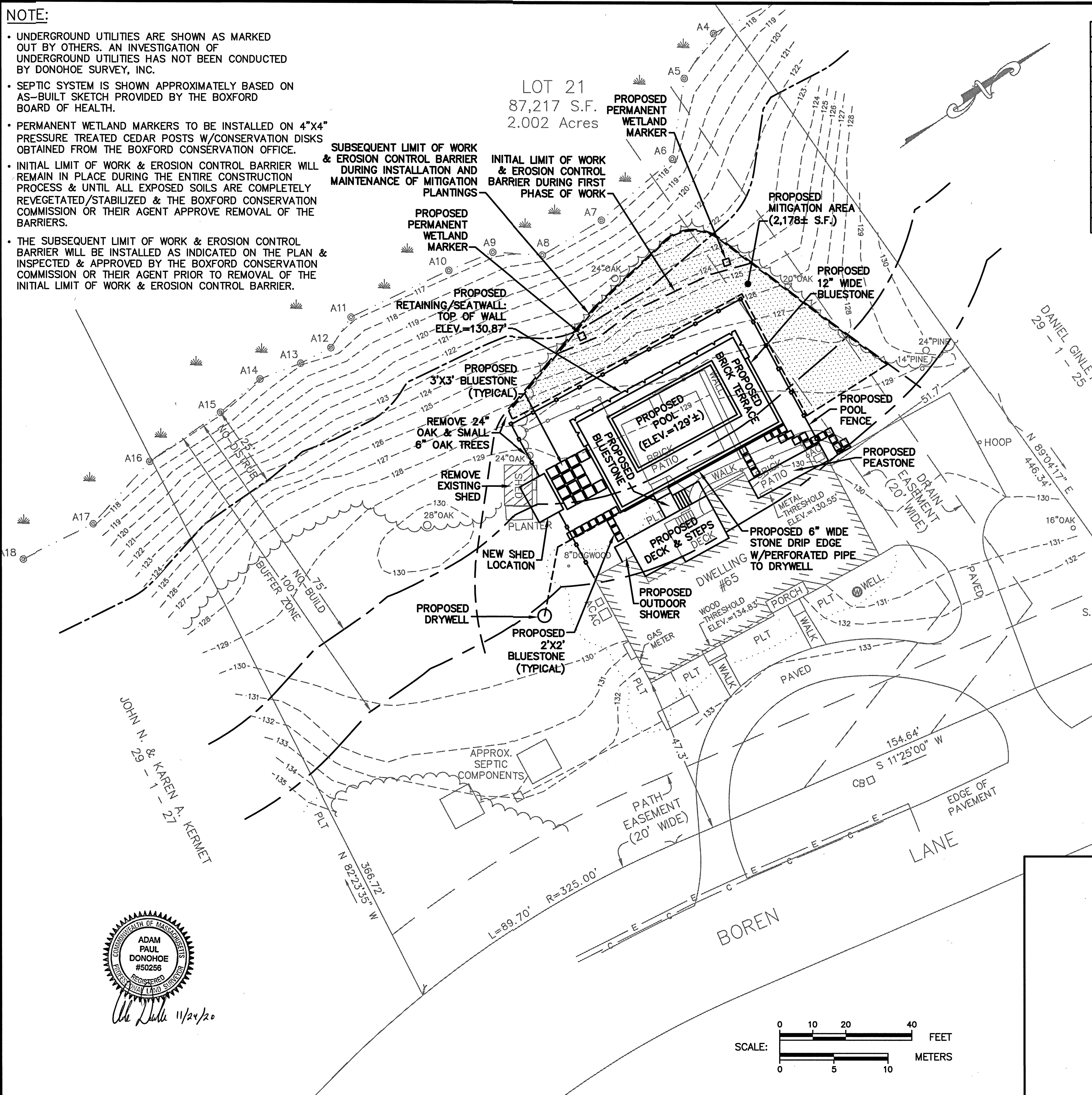


NOTE:

- UNDERGROUND UTILITIES ARE SHOWN AS MARKED OUT BY OTHERS. AN INVESTIGATION OF UNDERGROUND UTILITIES HAS NOT BEEN CONDUCTED BY DONOHOE SURVEY, INC.
- SEPTIC SYSTEM IS SHOWN APPROXIMATELY BASED ON AS-BUILT SKETCH PROVIDED BY THE BOXFORD BOARD OF HEALTH.
- PERMANENT WETLAND MARKERS TO BE INSTALLED ON 4"x4" PRESSURE TREATED CEDAR POSTS W/CONSERVATION DISKS OBTAINED FROM THE BOXFORD CONSERVATION OFFICE.
- INITIAL LIMIT OF WORK & EROSION CONTROL BARRIER WILL REMAIN IN PLACE DURING THE ENTIRE CONSTRUCTION PROCESS & UNTIL ALL EXPOSED SOILS ARE COMPLETELY REVEGETATED/STABILIZED & THE BOXFORD CONSERVATION COMMISSION OR THEIR AGENT APPROVE REMOVAL OF THE BARRIERS.
- THE SUBSEQUENT LIMIT OF WORK & EROSION CONTROL BARRIER WILL BE INSTALLED AS INDICATED ON THE PLAN & INSPECTED & APPROVED BY THE BOXFORD CONSERVATION COMMISSION OR THEIR AGENT PRIOR TO REMOVAL OF THE INITIAL LIMIT OF WORK & EROSION CONTROL BARRIER.



PERVIOUS SURFACES:			
	EXISTING	PROPOSED	DIFFERENTIAL
NO DISTURB ZONE: 0'-25'	0 S.F.	0 S.F.	0 S.F.
NO BUILD ZONE: 25'-75'	31 S.F.	0 S.F.	-31 S.F.
BUFFER ZONE: 75'-100'	166 S.F.	576 S.F.	+410 S.F.
SUB-TOTAL	197 S.F.	576 S.F.	+379 S.F.
IMPERVIOUS SURFACES:			
	EXISTING	PROPOSED	DIFFERENTIAL
NO DISTURB ZONE: 0'-25'	0 S.F.	0 S.F.	0 S.F.
NO BUILD ZONE: 25'-75'	598 S.F.	1,687 S.F.	+1,089 S.F.
BUFFER ZONE: 75'-100'	777 S.F.	749 S.F.	-28 S.F.
SUB-TOTAL	1,375 S.F.	2,436 S.F.	+1,061 S.F.
TOTAL	1,572 S.F.	3,012 S.F.	+1,440 S.F.

ZONING DISTRICT: R-A

ASSESSORS: MAP 29 BLOCK 1 LOT 26

REFERENCES:

DEED - BK. 35129 PG. 343

PLANS - PL. BK. 185 PL. 2
PL. BK. 268 PL. 66

VERTICAL DATUM: N.A.V.D. 1988

WETLAND DELINEATION: DEROSA ENVIRONMENTAL CONSULTING, INC. (7/2/20)

LEGEND & SYMBOLS

- S.B. STONE BOUND
- D.H. DRILL HOLE
- ELEV. ELEVATION
- FD. FOUND
- AC AIR CONDITIONER
- PLT PLANTED/GARDEN
- CB CATCH BASIN
- WOOD FENCE
- C— COMMUNICATIONS LINE
- E— ELECTRIC LINE
- ~— TREE LINE

PROPOSED PLAN

#65 BOREN LANE

BOXFORD, MA

PROPERTY OF
CAROLINE & JOSEPH REYNOLDS

SCALE: 1" = 20' REV. 11/24/20
OCTOBER 13, 2020

DONOHOE SURVEY, INC.

363 BOSTON ST. TOPSFIELD, MA

(978) 887-6161

PROJ. 3923

