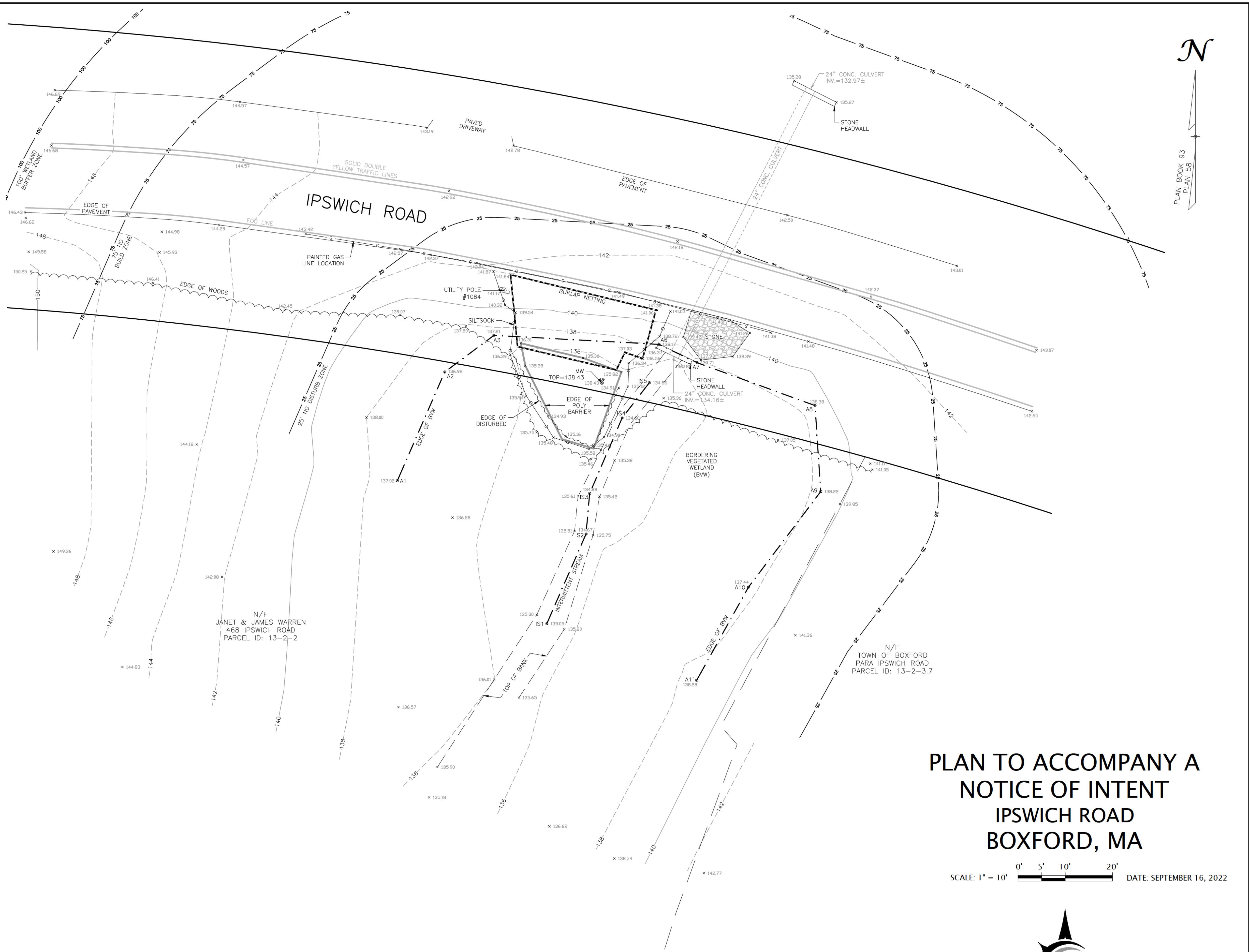


LEGEND OF ABBREVIATIONS & SYMBOLS

EXISTING 2-FOOT CONTOUR	---148---
EXISTING 10-FOOT CONTOUR	---150---
EXISTING SPOT ELEVATION	x 149.58
EDGE OF WOODS	~ ~ ~
SILT SOCK	○
BURLAP NETTING	— — —
PAINTED GAS LOCATION	G
EDGE OF BORDERING VEGETATED WETLAND	A1
25' NO DISTURB ZONE	25
75' NO BUILD ZONE	75
100' WETLAND BUFFER ZONE	100
INTERMITTENT STREAM	IS1
UTILITY POLE	○
MONITORING WELL	⊕
CONCRETE	CONC.
INVERT	INV.



**PLAN TO ACCOMPANY A
NOTICE OF INTENT
IPSWICH ROAD
BOXFORD, MA**

SCALE: 1" = 10' DATE: SEPTEMBER 16, 2022

**WILLIAMS
&
SPARAGES**
ENGINEERS | PLANNERS | SURVEYORS
189 NORTH MAIN STREET
SUITE 101
MIDDLETON, MA 01949
PHONE: (978) 539-8088
FAX: (978) 539-8200
WSENGINEERS.COM

- NOTES:
- ALL ELEVATIONS SHOWN ARE REFERENCED TO THE NORTH AMERICAN VERTICAL DATUM OF 1988 (NAVD88).
 - EXISTING TOPOGRAPHY SHOWN IS THE RESULT OF AN ACTUAL INSTRUMENT SURVEY CONDUCTED BY WILLIAMS & SPARAGES LLC ON AUGUST 28, 2022 AND SEPTEMBER 13, 2022.
 - WETLAND RESOURCE AREAS DELINEATED BY WILLIAMS & SPARAGES LLC ON AUGUST 2, 2022.

P:\BOXF-0121\Ipswich Road - Truck Accident\Drawings\NOI\Ipswich.dwg, GH