



SAGAMORE LANE

N/F
JOSEPH C. JR. & CYNTHIA A. FAMOLARE
(LOT 7)
MAP 42, BLOCK 1, LOT 19.2

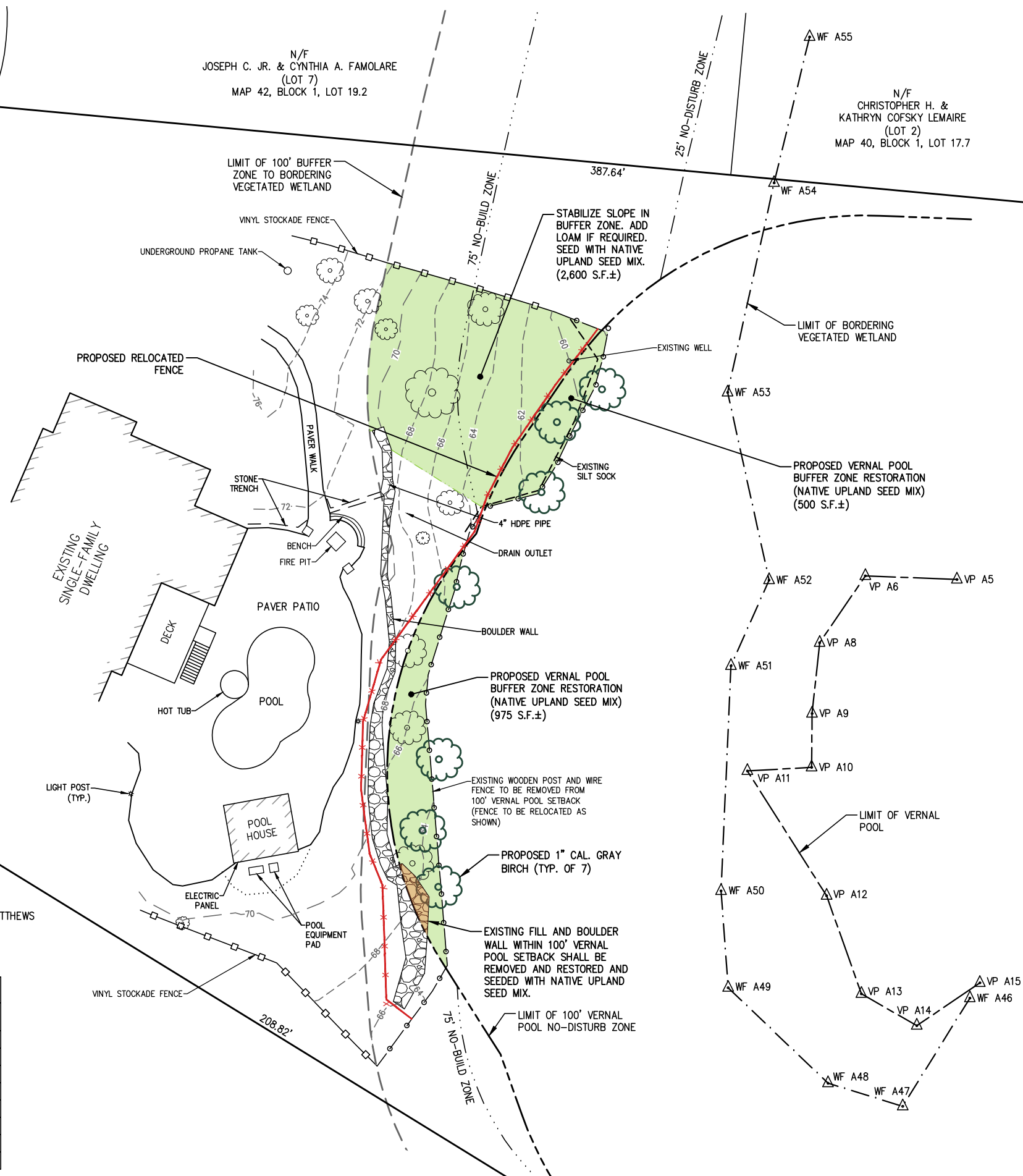
N/F
CHRISTOPHER H. &
KATHRYN COFSKY LEMAIRE
(LOT 2)
MAP 40, BLOCK 1, LOT 17.7

LOT 6
AREA = 2.32 AC.±

N/F
MARK JACKSON & MAUREEN MATTHEWS
LOT 5
MAP 40, BLOCK 1, 17.5

NATIVE UPLAND SEED MIX

COMMON NAME	SCIENTIFIC NAME	INDICATOR STATUS	%	QUANTITY
INDIAN GRASS	<i>Sorghastrum nutans</i>	UPL	0.10	
SWITCHGRASS	<i>Panicum virgatum</i>	FAC	0.10	
UPLAND BENTGRASS	<i>Agrostis perennans</i>	FACU	0.10	
LITTLE BLUESTEM	<i>Scizachyrium scoparium</i>	FACU-	0.20	
BIG BLUESTEM	<i>Andropogon gerardii</i>	FAC	0.10	
SAND DROPSEED	<i>Sporobolus cryptandrus</i>	UPL	0.10	
RED FESCUE	<i>Festuca rubra</i>	FACU-	0.30	5 POUNDS
			1.00	



The Morin-Cameron GROUP, INC.
 CIVIL ENGINEERS, ENVIRONMENTAL CONSULTANTS
 LAND SURVEYORS, LAND USE PLANNERS
 165 EDWIN STREET, BOX 100, WESTPORT, MASSACHUSETTS 01923
 P: 978-777-6586, W: WWW.MORINCAMERON.COM

SURVEY BY: PM / SR
 DRAFTED BY: DJP
 CHECKED BY: JMM
 APPROVED BY: JMM
 SCALE: 1"=20'
 DATE: FEBRUARY 16, 2021

NO.	DESCRIPTION	DATE

PLAN OF LAND
 IN
BOXFORD, MASSACHUSETTS
23 SAGAMORE LANE
 (ASSESSOR'S MAP 42, BLOCK 1, LOT 17.6)
 PREPARED FOR:
JASON KAHAN

PROJ. NO.
3997
 SHEET NO.
1 OF 1