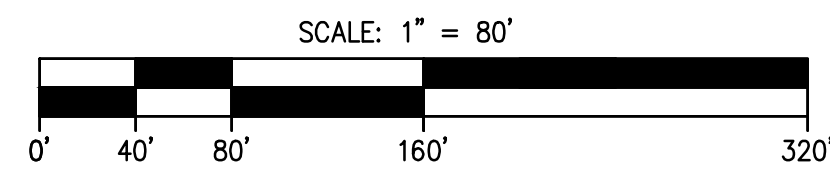


CONSERVATION RESTRICTION PLAN
 (SHEET 1 OF 3)
 IN
BOXFORD, MASSACHUSETTS
 ON
LAND OFF WILLOW ROAD
 (ASSESSOR'S MAP 6, BLOCK 2, LOT 2.2)

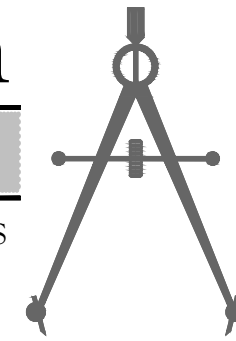
APPLICANT
TOLL BROS., INC.
 116 FLANDERS ROAD, WESTBOROUGH, MA
 DATE: APRIL 1, 2021

FOR REGISTRY USE ONLY
 I HEREBY CERTIFY THAT THIS PLAN HAS BEEN PREPARED IN CONFORMANCE WITH THE RULES AND REGULATIONS OF THE REGISTERS OF DEEDS OF THE COMMONWEALTH OF MASSACHUSETTS.

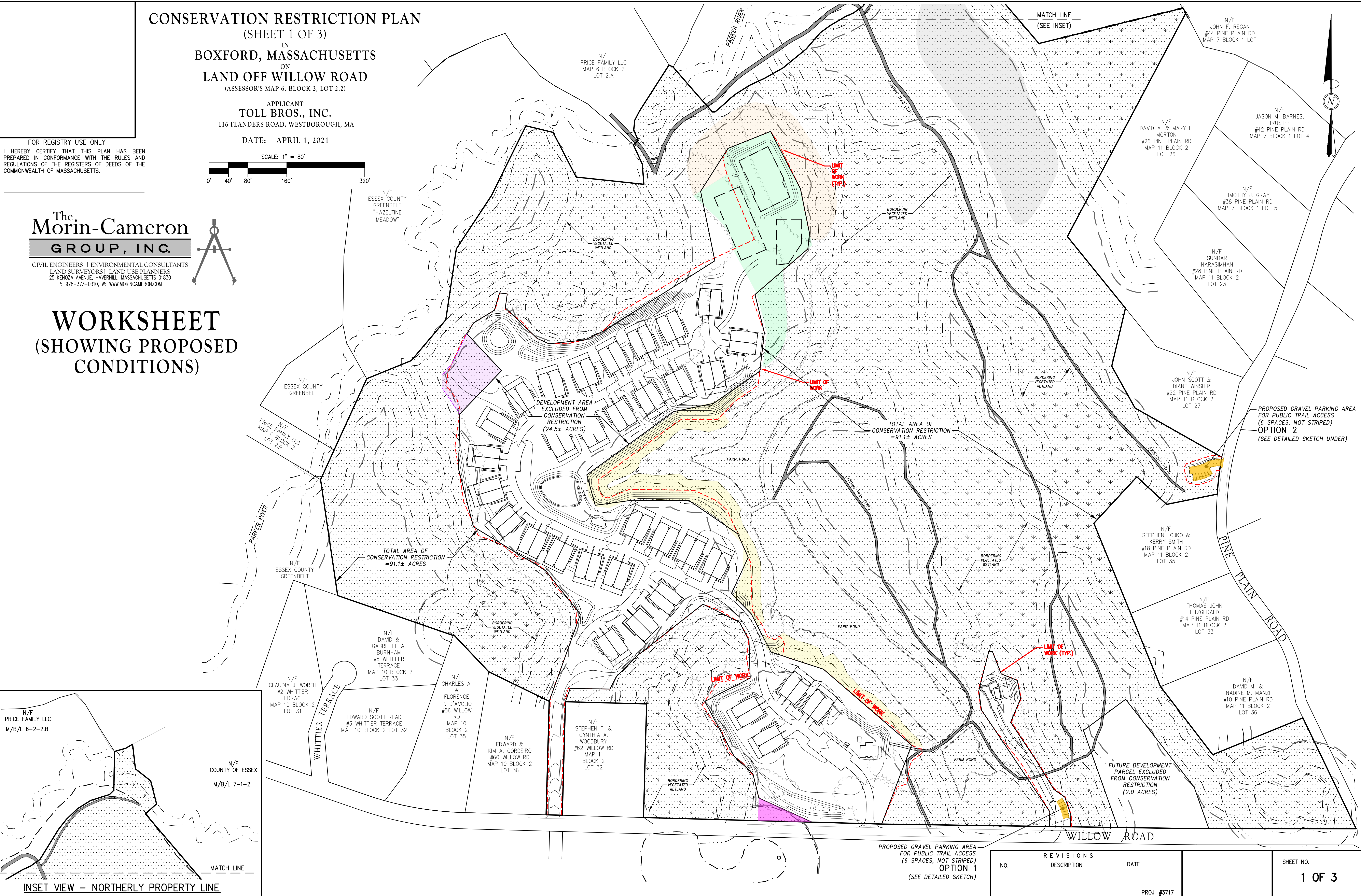
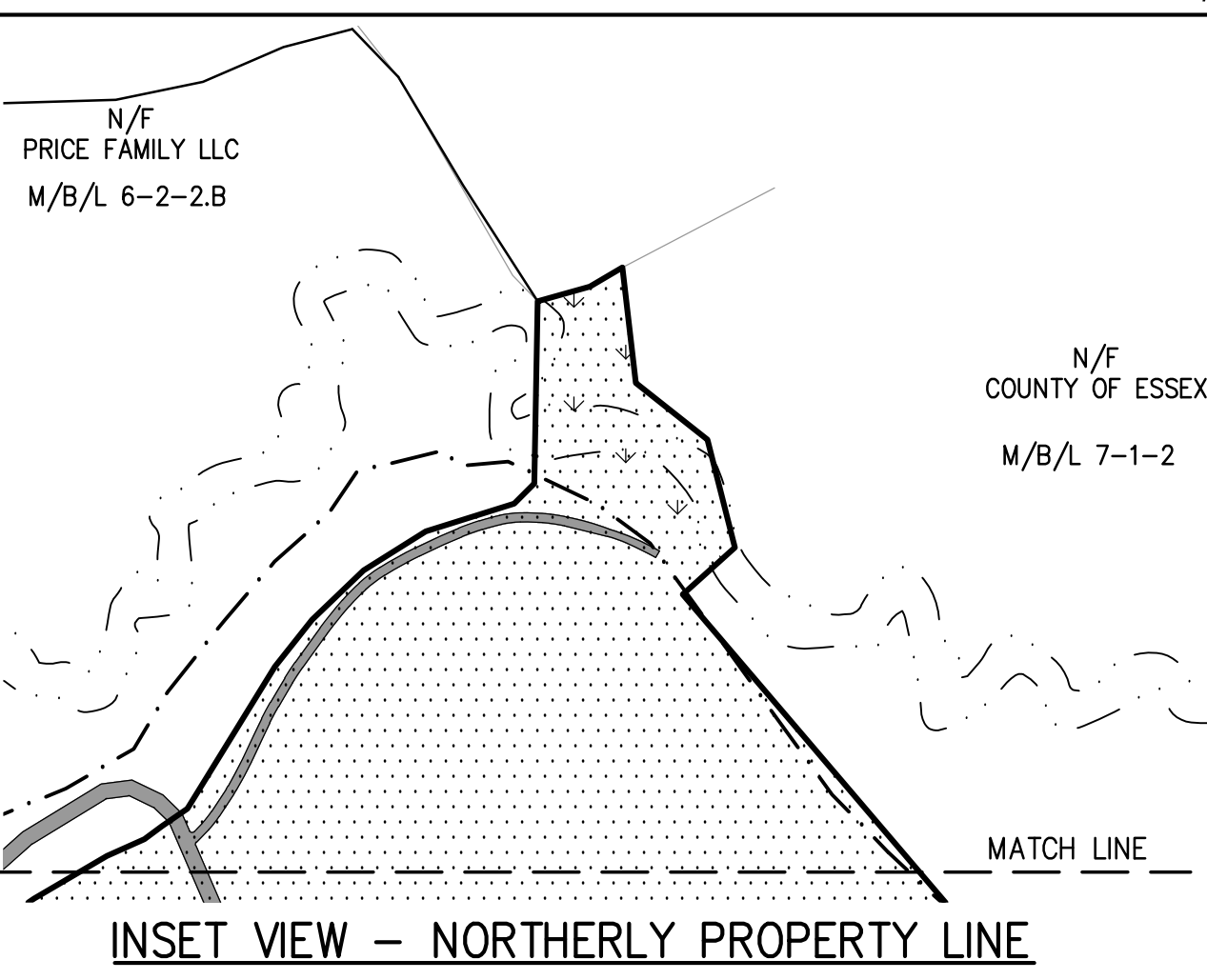


The Morin-Cameron GROUP, INC.

CIVIL ENGINEERS | ENVIRONMENTAL CONSULTANTS
 LAND SURVEYORS | LAND USE PLANNERS
 25 KENOZA AVENUE, HAVERHILL, MASSACHUSETTS 01830
 P. 978-373-0310, W. WWW.MORINCAMERON.COM



WORKSHEET
 (SHOWING PROPOSED CONDITIONS)



PROPOSED GRAVEL PARKING AREA FOR PUBLIC TRAIL ACCESS (6 SPACES, NOT STRIPED)
OPTION 2
 (SEE DETAILED SKETCH UNDER)

PROPOSED GRAVEL PARKING AREA FOR PUBLIC TRAIL ACCESS (6 SPACES, NOT STRIPED)
OPTION 1
 (SEE DETAILED SKETCH)

REVISIONS		DATE	SHEET NO.
NO.	DESCRIPTION		
			1 OF 3

PROJ. #3717