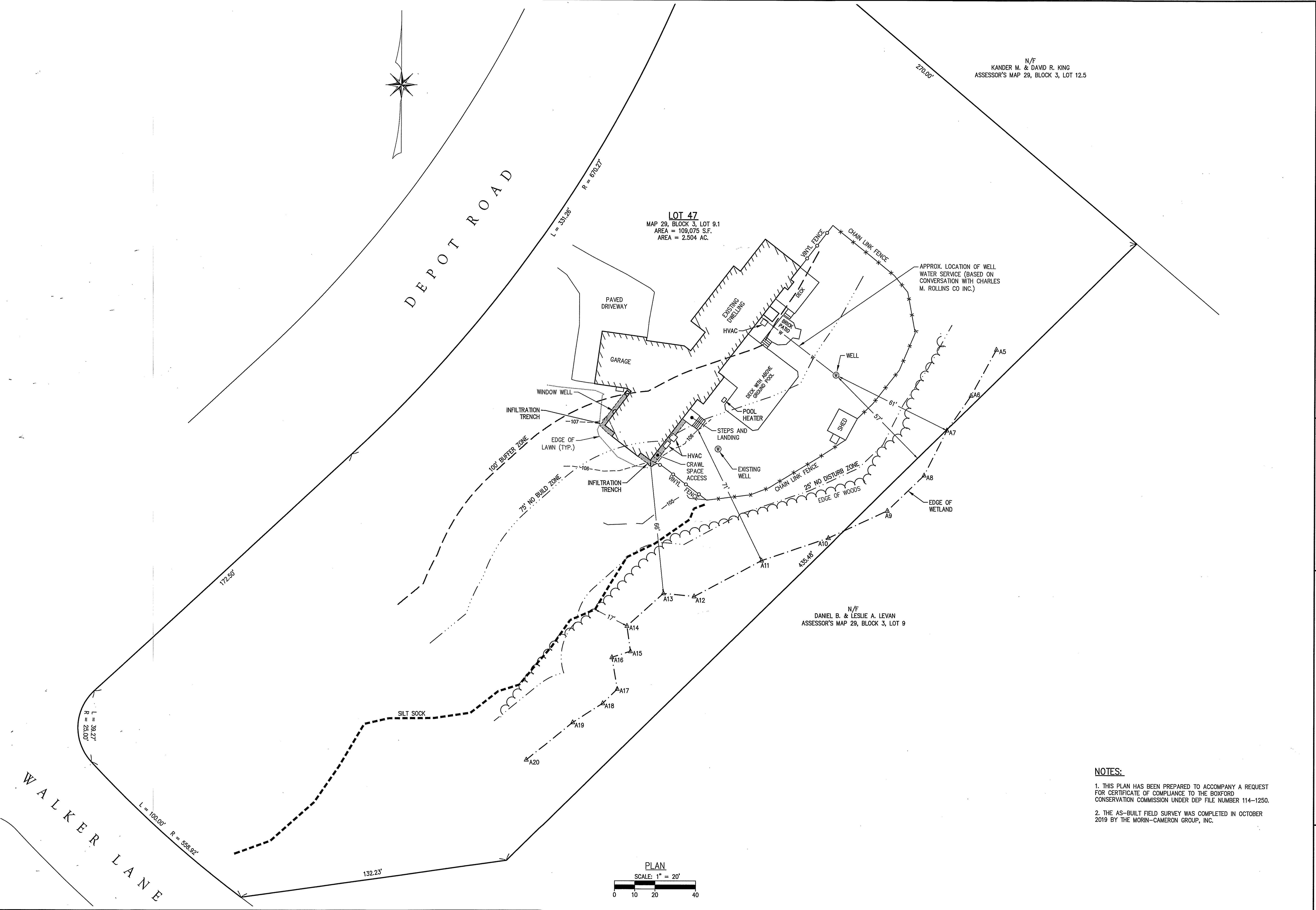


N/F  
KANDER M. & DAVID R. KING  
ASSESSOR'S MAP 29, BLOCK 3, LOT 12.5

**LOT 47**  
MAP 29, BLOCK 3, LOT 9.1  
AREA = 109,075 S.F.  
AREA = 2.504 AC.

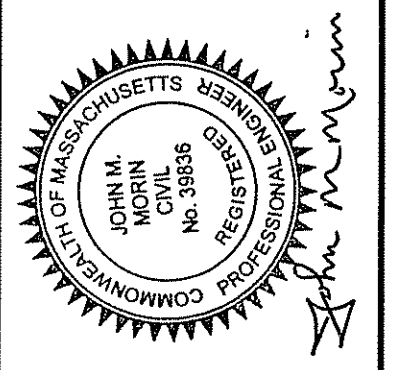


APPROX. LOCATION OF WELL WATER SERVICE (BASED ON CONVERSATION WITH CHARLES M. ROLLINS CO INC.)

N/F  
DANIEL B. & LESLIE A. LEVAN  
ASSESSOR'S MAP 29, BLOCK 3, LOT 9

- NOTES:**
1. THIS PLAN HAS BEEN PREPARED TO ACCOMPANY A REQUEST FOR CERTIFICATE OF COMPLIANCE TO THE BOXFORD CONSERVATION COMMISSION UNDER DEP FILE NUMBER 114-1250.
  2. THE AS-BUILT FIELD SURVEY WAS COMPLETED IN OCTOBER 2019 BY THE MORIN-CAMERON GROUP, INC.

**The Morin-Cameron GROUP, INC.**  
CIVIL ENGINEERS / ENVIRONMENTAL CONSULTANTS  
LAND SURVEYORS / LAND USE PLANNERS  
66 ELM STREET, DANVERS, MASSACHUSETTS 01923  
P: 978-777-8586, F: 978-774-3488, W: WWW.MORINCAMERON.COM



SURVEY BY: MCG  
DRAFTED BY: ABC/DJP  
CHECKED BY: WAS  
APPROVED BY: JMM  
SCALE: 1"=20'  
DATE: FEBRUARY 20, 2020

NO.	DESCRIPTION	DATE

AS-BUILT PLAN OF LAND  
IN  
BOXFORD, MASSACHUSETTS  
47 DEPOT ROAD  
PREPARED FOR:  
ERNEST TREMBLAY

AS-BUILT PLAN  
DRAWING NO.  
1 OF 1