

## Memo

Date: June 15, 2020  
To: Daniel Jackson, Jackson Landscaping  
From: Dale Gienapp, Alicia Bernardo - Gienapp Architects  
Project: Camp Rotary - New Dining Hall Proj #: 662.1

This memo outlines the planting and seeding that we are confirming to be used for the Camp Rotary Project located at 372 Ipswich Rd, Boxford, MA 01921. Please provide a cost estimate to furnish and install the following:

- (3) White Pine: 8' tall, 1" caliper
- (3) River Birch: 8' tall, 1" caliper
- (3) White Pine: Smaller than 8' to intersperse between larger trees.
- (3) River Birch: Smaller than 8' to intersperse between larger trees.
- Mountain Laurels: (6) 2-gallon containers (6) 1-gallon containers
- Bearberry: (25) 2.5" pots distributed in area at 36" o.c.
- Jute any slope steeper than 3:1 after Hydroseeding is complete.
- Dry Seed mix (see attached document)



Reference the Camp Rotary Landscape and Seeding Plan attached for approximate locations.

### Attachment:

- Landscape and Seeding Plan dated: 6-15-20
- Conservation dry seed mix

*End memo*

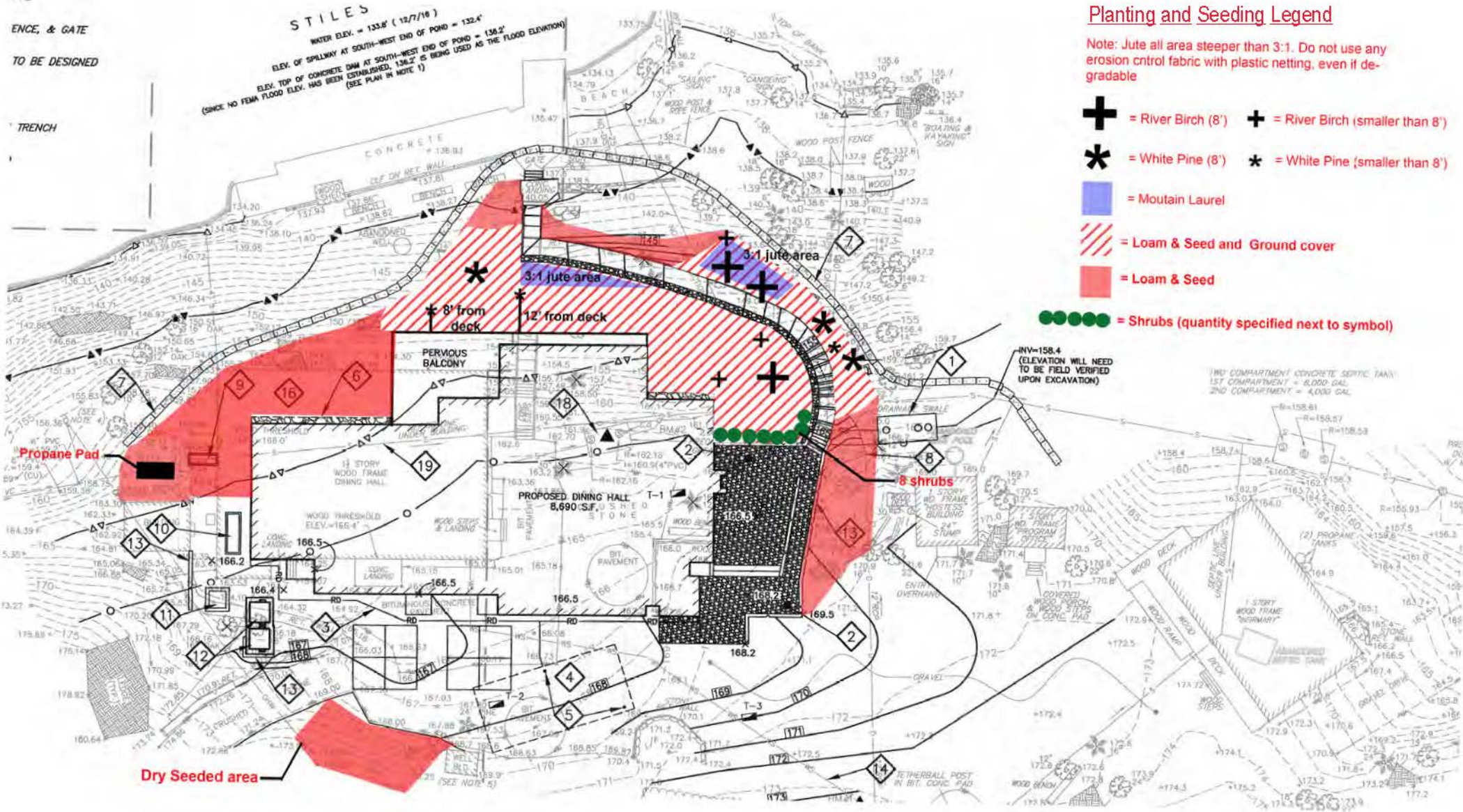
# Landscape and Seeding Plan

This diagram is not to scale and is intended for reference only. This will help to understand the plants that are proposed as well as their approximate locations on the site. You can contact Alicia Bernardo at Gienapp Architects (978-750-9062) [abernardo@gienapparchitects.com](mailto:abernardo@gienapparchitects.com) with any additional questions or comments.

## Planting and Seeding Legend

Note: Jute all area steeper than 3:1. Do not use any erosion control fabric with plastic netting, even if degradable

- +** = River Birch (8')
- +** = River Birch (smaller than 8')
- \*** = White Pine (8')
- \*** = White Pine (smaller than 8')
- = Mountain Laurel
- ▨** = Loam & Seed and Ground cover
- = Loam & Seed
- = Shrubs (quantity specified next to symbol)



Note: This planting diagram is an overlay of the existing civil drawing. Please disregard any additional information/call outs not related to the planting and seeding legend shown.

Camp Rotary  
372 Ipswich Road, Boxford, MA

Gienapp Architects  
6-15-20

Conservation Dry Mixture:

Seed Mixes

**New England Erosion Control/Restoration Mix for Dry Sites – Spec Sheet**

SPECIES: Red Fescue (*Festuca rubra*), Canada Wild Rye (*Elymus canadensis*), Annual Ryegrass (*Lolium multiflorum*), Perennial Ryegrass (*Lolium perenne*), Little Bluestem (*Schizachyrium scoparium*), Indian Grass (*Sorghastrum nutans*), Switch Grass (*Panicum virgatum*), Upland Bentgrass (*Agrostis perennans*).

APPLICATION RATE: 35 lb/acre | 1250 sq ft/lb

**New England Roadside Matrix Upland Seed Mix – Spec Sheet**

APPLICATION RATE: 35LBS/ACRE | 1250 sq ft/lb

SPECIES:

Grasses

Virginia Wild Rye (*Elymus virginicus*), Little Bluestem (*Schizachyrium scoparium*), Red Fescue (*Festuca rubra*), Big Bluestem (*Andropogon gerardii*), Indian Grass (*Sorghastrum nutans*), Switch Grass (*Panicum virgatum*)

Wildflowers

Partridge Pea (*Chamaecrista fasciculata*), Butterfly Milkweed (*Asclepias tuberosa*), Panicleleaf Tick Trefoil (*Desmodium paniculatum*), Beard Tongue (*Penstemon digitalis*), Black Eyed Susan (*Rudbeckia hirta*), Hollow-Stem Joe Pye Weed (*Eupatorium fistulosum*/*Eutrochium fistulosum*)

Shrubs

Grey Dogwood (*Cornus racemosa*), Silky Dogwood (*Cornus amomum*), Staghorn Sumac (*Rhus typhina*)