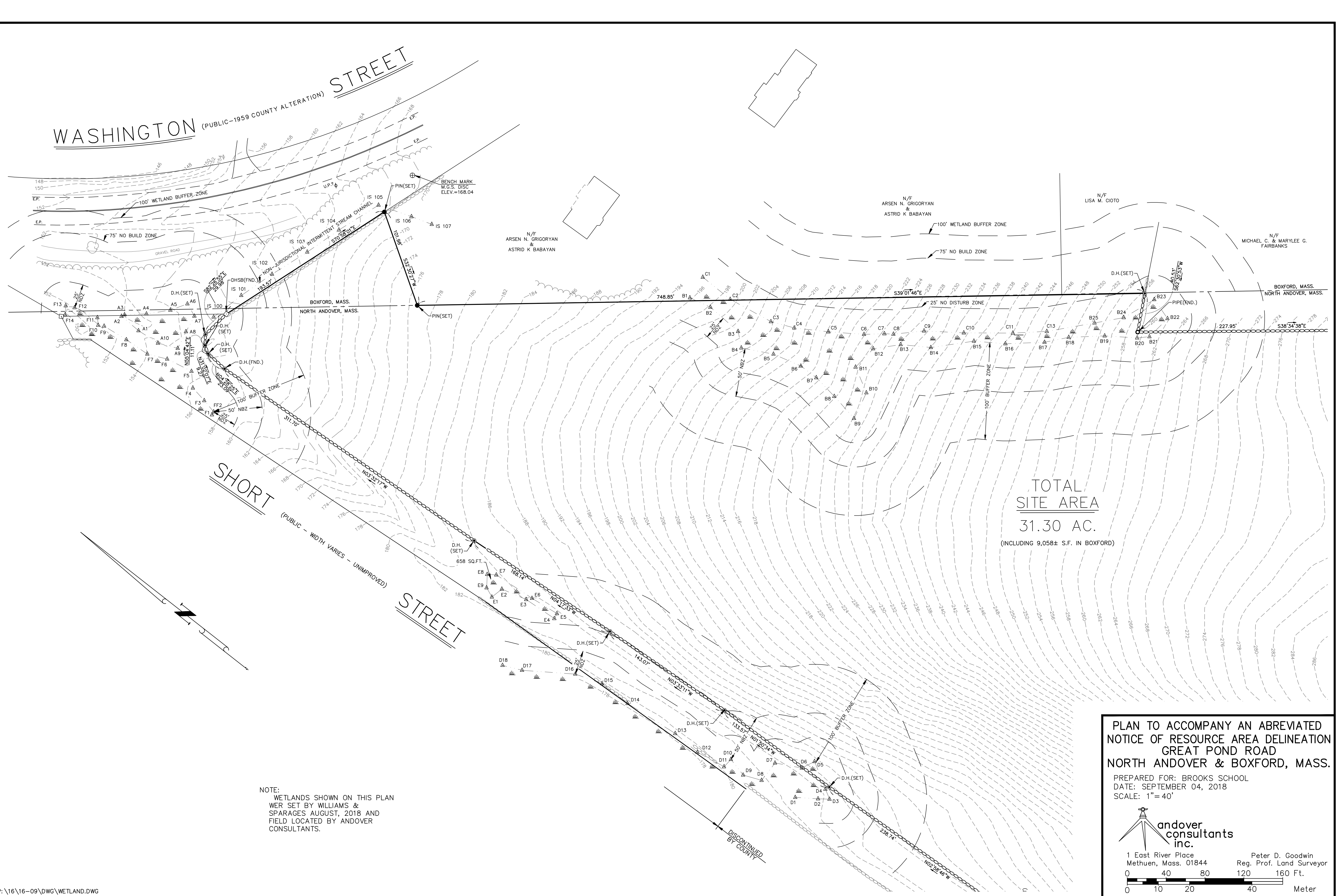


WASHINGTON STREET
(PUBLIC-1959 COUNTY ALTERATION)



TOTAL
SITE AREA
31.30 AC.
(INCLUDING 9,058± S.F. IN BOXFORD)

NOTE:
WETLANDS SHOWN ON THIS PLAN
WER SET BY WILLIAMS &
SPARAGES AUGUST, 2018 AND
FIELD LOCATED BY ANDOVER
CONSULTANTS.

PLAN TO ACCOMPANY AN ABBREVIATED
NOTICE OF RESOURCE AREA DELINEATION
GREAT POND ROAD
NORTH ANDOVER & BOXFORD, MASS.

PREPARED FOR: BROOKS SCHOOL
DATE: SEPTEMBER 04, 2018
SCALE: 1" = 40'



1 East River Place
Methuen, Mass. 01844
Peter D. Goodwin
Reg. Prof. Land Surveyor
0 40 80 120 160 Ft.
0 10 20 40 Meter