

SPLIT SYSTEM AIR HANDLING SCHEDULE

UNIT NO.	FAN DATA				ELECTRICAL DATA				COOLING CAPACITY				FILTER DATA				HOT WATER COIL				UNIT NO.	SERVICE	LOCATION	SYSTEM NET. (MBH)	AMB (°F)	COND. FAN			ELECTRICAL DATA				MANUFACTURER & MODEL NO.	REMARKS		
	TOTAL CFM	MIN. O.A. (CFM)	EXT. SP. IN H ₂ O	RPM	BHP	HP	VOLTS	PH	HZ	MCA	MOCP	TOTAL COOLING (MBH)	SENSIBLE HEAT (MBH)	TYPE	THK.	EFF.	COIL	CAP	WATER FLOW (GPM)	P.D. (IN.)						QTY	HP EA	RPM	V	Ø	HZ	MCA			MOCP	
AC-1	2225	645	.4	606	.64	2.4	208	3	60	6.5	15	71	56	DISP.	2"	30%	CARRIER 40RM-007-B501HC	2 ROW	183	18.3	4.3	ACCU-1	AC-1	GRADE	71.0	95	1	1/3	850	208	3	60	30.1	40	CARRIER 38AK-007501	①②③④⑤⑥⑦⑧
AC-2	1750	645	.4	569	.53	2.4	208	3	60	6.5	15	71	56	DISP.	2"	30%	CARRIER 40RM-007-B501HC	2 ROW	183	18.3	4.3	ACCU-2	AC-2	GRADE	71.0	95	1	1/3	850	208	3	60	30.1	40	CARRIER 38AK-007501	①②③④⑤⑥⑦⑧
AC-3	1650	750	.4	569	.53	2.4	208	3	60	6.5	15	71	56	DISP.	2"	30%	CARRIER 40RM-007-B501HC	2 ROW	183	18.3	4.3	ACCU-3	AC-3	GRADE	71.0	95	1	1/3	850	208	3	60	30.1	40	CARRIER 38AK-007501	①②③④⑤⑥⑦⑧
AC-4	2000	750	.4	569	.53	2.4	208	3	60	6.5	15	71	56	DISP.	2"	30%	CARRIER 40RM-007-B501HC	2 ROW	183	18.3	4.3	ACCU-4	AC-4	GRADE	71.0	95	1	1/3	850	208	3	60	30.1	40	CARRIER 38AK-007501	①②③④⑤⑥⑦⑧
AC-5	2920	615	.4	677	1.08	2.4	208	3	60	6.5	15	89	69	DISP.	2"	30%	CARRIER 40RM-008-B501HC	2 ROW	275	20.6	5.2	ACCU-5	AC-5	GRADE	90	95	1	3/4	1100	208	3	60	39.8	50	CARRIER 38AKS008-501	①②③④⑤⑥⑦⑧
AC-6	1480	375	.4	534	.42	2.4	208	3	60	6.5	15	61	45	DISP.	2"	30%	CARRIER 40RM-007-B501HC	2 ROW	156	15.6	3.4	ACCU-6	AC-6	GRADE	70.0	95	1	1/3	850	208	3	60	30.1	40	CARRIER 38AK-007501	①②③④⑤⑥⑦⑧
AC-7	2670	735	.4	677	1.08	2.4	208	3	60	6.5	15	89	69	DISP.	2"	30%	CARRIER 40RM-008-B501HC	2 ROW	275	20.6	5.2	ACCU-7	AC-7	GRADE	90	95	1	3/4	1100	208	3	60	39.8	50	CARRIER 38AKS008-501	①②③④⑤⑥⑦⑧
AC-8	550	-	-	-	-	49W	208	1	60	.66	15	22.6	15.1	DISP.	2"	30%	CARRIER 40NB024	-	-	-	-	ACCU-8	AC-8	GRADE	25.5	95	1	1/8	850	208	1	60	17.2	30	CARRIER 38HD024	①⑦

ALL REFRIGERANT PIPING SHALL BE SIZED ACCORDING TO MANUFACTURER'S RECOMMENDATIONS.

① HOT GAS BYPASS.
 ② INTERNAL/EXTERNAL FACE AND BYPASS.
 ③ MASON INDUSTRIES VIBRATION ISOLATORS TYPE 30N.
 ④ FIELD INSTALLED RETURN AIR PLENUM. SEE MECHANICAL DETAIL SHEET FOR DETAILS.
 ⑤ TWO-ROW HOT WATER COILS.
 ⑥ OVERHEAD SUSPENSION PACKAGE.
 ⑦ CONDENSATE PUMP.
 ⑧ AC UNITS 1-7 SHALL BE EQUIPPED WITH A FREEZE STAT ON THE RETURN SIDE OF UNIT WIRED TO UNIT'S MOTORIZED DAMPER.

DIFFUSER, REGISTER & GRILLE SCHEDULE

SYMBOL	NECK SIZE	FUNCTION	MATERIAL	TYPE	FINISH	DAMPER	CFM RANGE	MANUFACTURER & MODEL NO.	REMARKS
CD-#	SEE DWG	SUPPLY	ALUM	CEILING	SEE ARCH	OBD	SEE DWG	METAL/AIRE 5000 TV SPFN	-
SD-1	SEE DWG	SUPPLY	ALUM	CEILING	SEE ARCH	OBD	SEE DWG	METAL/AIRE VHD	-
RR-1	SEE DWG	RETURN	ALUM	CEILING	SEE ARCH	OBD	SEE DWG	METAL/AIRE CCS	-
RR-1	SEE DWG	RETURN	ALUM	SIDEWALL	SEE ARCH	OBD	SEE DWG	METAL/AIRE RH	-
ER-1	SEE DWG	EXHAUST	ALUM	CEILING	SEE ARCH	OBD	SEE DWG	METAL/AIRE RH	-

INDICATES BLOW PATTERN

FIN TUBE RADIATION SCHEDULE

UNIT NO.	WATER TEMP. ENT. LVG.	PIPE TYPE SIZE	FINS		ROWS HIGH	MBH PER LIN. FT.	LENGTH	TOTAL MBH	COVER TYPE SIZE	MANUFACTURER & MODEL NO.	REMARKS
			TYPE	SIZE							
FT-1	190 170	CU 3/4"	AL	2 1/4"x2 1/2"	1	700	SEE DWGS	SEE DWGS	ALUM.	-	STERLING KP-3/4-50-2

BOILER SCHEDULE

SYMBOL	LOCATION	TYPE	FUEL	BOILER SYSTEM HP	SYSTEM GROSS INPUT (MBH)	SYSTEM GROSS OUTPUT (MBH)	COMB. EFF.	NET SQ. FT.	NET CAP. MBH	WATER CONTENT GALS.	MANUFACTURER & MODEL NO.	REMARKS
B-1	BOILER ROOM	FORCED DRAFT	NAT. GAS	45.6	1905	1329	-	-	-	-	BURNHAM V910A	①
B-2	BOILER ROOM	FORCED DRAFT	NAT. GAS	45.6	1905	1329	-	-	-	-	BURNHAM V910A	①

① WITH POWER VENT MODEL

FAN SCHEDULE

UNIT NO.	SERVICE	LOCATION	CFM	FAN TYPE	E.S.P. (IN. W.G.)	WHEEL TYPE	DRIVE	OUTLET VELOCITY (FPM)	FAN				MANUFACTURER MODEL NUMBER (AS STANDARD)	REMARKS	
									RPM	V	HP	Ø			
EF-1	TOILETS	ATTIC	540	INLINE	.4	CENT	BELT	-	1623	115	60	1/4	1	GREENHECK BSQ-90-4	-
EF-2	TOILETS	ATTIC	225	INLINE	.3	CENT	BELT	-	1418	1/4	60	1/4	1	GREENHECK BSQ-70-4	-
EF-3	RELIEF	ATTIC	3595	INLINE	.5	CENT	BELT	1725	2021	208	60	2.0	3	GREENHECK BSQ-140-20	-
EF-4	RELIEF	ATTIC	3375	INLINE	.5	CENT	BELT	1725	2028	208	60	1.5	3	GREENHECK BSQ-140-15	③ -
EF-5	HOISTWAY	ATTIC	500	PROP	.2	CENT	BELT	1725	834	120	80	2.0	1	GREENHECK SBE-1H20-4	④ -
F-1	VENT.	ATTIC	4690	INLINE	.5	CENT	BELT	1725	2185	208	60	1.5	3	GREENHECK BSQ-160-20	① -
F-2	VENT.	ATTIC	4065	INLINE	.5	CENT	BELT	1725	1525	208	60	3/4	3	GREENHECK BSQ-160-15	② -

EF-5 SHALL BE INTERLOCKED WITH T-STAT LOCATED WITHIN SHAFT AT UNDERSIDE OF MOTORIZED DAMPER LOCATION AND INTERLOCKED WITH EMERGENCY GENERATOR AND ACTIVATED BY SMOKE DETECTORS.

RH 1 GREENHECK GRSR 18"x18" RELIEF HOOD SHALL BE USED IN CONJUNCTION WITH GREENHECK INLINE FANS EF-3, EF-4

① F-1 SHALL BE TWO SPEED FAN LOW: 2385 HIGH: 4690
 ② F-2 SHALL BE A TWO SPEED FAN LOW: 2130 HIGH: 4065
 ③ EF-3 SHALL BE A TWO SPEED DRIVE LOW: 1660 HIGH: 3595
 ④ EF-4 SHALL BE A TWO SPEED DRIVE LOW: 1090 HIGH: 3395

AIR-COOLED CONDENSER SCHEDULE

PUMP SCHEDULE

UNIT NO.	LOCATION	SERVICE	FLUID TYPE	MAX TEMP °F	PUMP CAPACITY			MOTOR			MANUFACTURER & MODEL NO.	REMARKS
					GPM	HEAD FT.	RPM	HP	V	PH		
P-1	FIRST FLOOR MECH. ROOM	HW LOOP	WATER	200°	186	60	1160	5.5	208	3	TACO FE2513	PRIMARY
P-2	FIRST FLOOR MECH. ROOM	HW LOOP	WATER	200°	186	60	1160	5.5	208	3	TACO FE2513	SECONDARY

UNIT/CABINET HEATER SCHEDULE

UNIT NO.	LOCATION	TYPE	CAP. MBH	AIR			WATER			MOTOR			MANUFACTURER AND MODEL NO.		
				CFM	ENT. °F	LVG. °F	GPM	ENT. °F	LVG. °F	P.D. FT.	H.P.	VOLTS		PHASE	CYCLE
CUH-1	STAIR #1	WALL	16.2	230	60	125	1.5	190	170	.15	1/15	120	1	60	STERLING F-1000-02
CUH-2	STAIR #2	WALL	16.2	230	60	125	1.5	190	170	.15	1/15	120	1	60	STERLING F-1000-02
CUH-3	LOBBY (101)	CEILING	47.2	505	60	129	4.0	190	170	1.0	1/10	120	1	60	STERLING RC-1200-06
UH-1	MECHANICAL	HORIZONTAL	39.2	700	0	32	4.4	190	170	.17	1/30	120	1	60	STERLING HS-60
UH-2	STORAGE	HORIZONTAL	15.65	420	60	96	1.9	190	170	2.2	9W	120	1	60	STERLING HS-115A
UH-3	ATTIC	HORIZONTAL	34.8	750	60	103	3.5	190	170	.12	1/30	120	1	60	STERLING HS-48
UH-4	ATTIC	HORIZONTAL	34.8	750	60	103	3.5	190	170	.12	1/30	120	1	60	STERLING HS-48
UH-5	ATTIC	HORIZONTAL	34.8	750	60	103	3.5	190	170	.12	1/30	120	1	60	STERLING HS-48
UH-6	ATTIC	HORIZONTAL	34.8	750	60	103	3.5	190	170	.12	1/30	120	1	60	STERLING HS-48

DIAPHRAGM EXPANSION TANK SCHEDULE

UNIT NO.	LOCATION	SERVICE	SYSTEM TEMP (°F) AT TANK LOCATION		TANK PRESSURE (PSI) AT TANK LOCATION		TANK ACCEPTANCE VOLUME (GAL)	TANK AIR CHARGE (PSIG)	MANUFACTURER MODEL NUMBER (AS STANDARD)	REMARKS
			MIN	MAX	MIN	MAX				
ET-1	BOILER ROOM	HOT WATER	170	200	15	30	125	5.0	TACO PSS-15	-

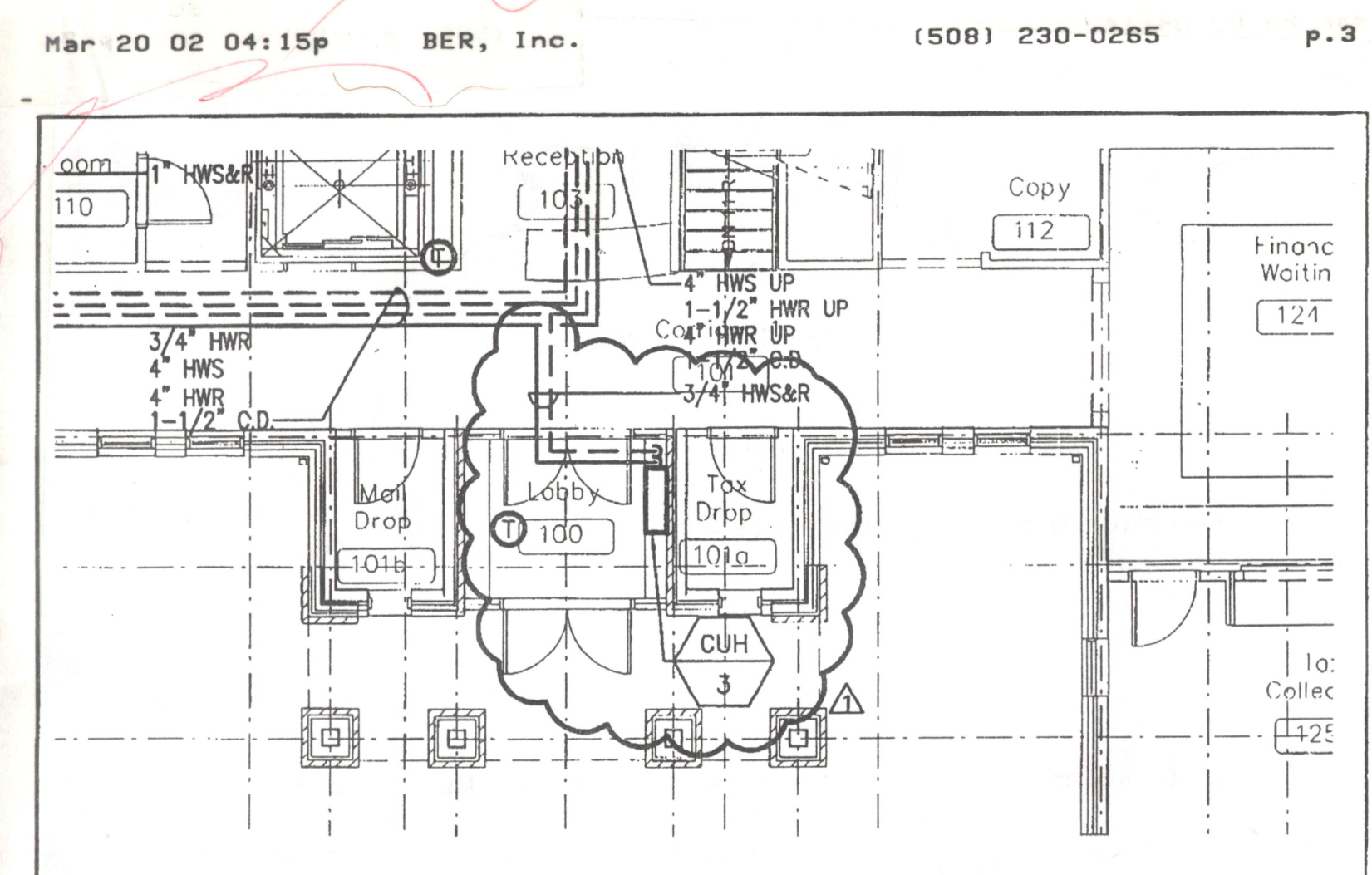
HVAC LEGEND

<p>☒ SUPPLY/OUTSIDE AIR DUCT UP</p> <p>☒ RETURN/EXHAUST DUCT UP</p> <p>☒ SUPPLY/OUTSIDE AIR DUCT DOWN</p> <p>☒ RETURN/EXHAUST DUCT DOWN</p> <p>○ DUCT UP</p> <p>○ DUCT DN.</p> <p>☒ SUPPLY DIFFUSER</p> <p>☒ RETURN/EXHAUST REGISTER</p> <p>—VD— MANU. VOLUME DAMPER</p> <p>—MD— MOTORIZED DAMPER</p> <p>⊙ THERMOSTAT</p> <p>⊙ SWITCH</p> <p>⊙ TAMPER PROOF SWITCH</p> <p>—CD— CONDENSATE DRAIN</p> <p>→ DIRECTION OF FLOW</p> <p>↘ ELBOW TURNED DOWN</p> <p>↙ ELBOW TURNED UP</p> <p>— — — BALL VALVE</p>	<p>— — — BUTTERFLY VALVE</p> <p>— — — CHECK VALVE</p> <p>⊕ TWO-WAY AUTOMATIC CONTROL VALVE</p> <p>⊕ THREE-WAY AUTOMATIC CONTROL VALVE</p> <p>⊕ PRESSURE REDUCING VALVE</p> <p>⊕ MANUAL AIR VENT</p> <p>⊕ PRESSURE GAUGE WITH BALL VALVE</p> <p>— — — UNION—SCREWED</p> <p>⊕ EQUIPMENT TAG DESIGNATION / G.P.M. HEAD LOSS</p> <p>NOTE: THE HEXAGON SYMBOL SHALL BE USED FOR ALL EQUIPMENT CALLOUTS REQUIRING ELECTRICAL POWER HOOK-UP.</p> <p>⊕ EQUIPMENT TAG DESIGNATION</p> <p>NOTE: THE SQUARE SYMBOL SHALL BE USED FOR ALL EQUIPMENT CALLOUTS THAT DO NOT REQUIRE ELECTRICAL POWER.</p> <p>⊕ DIFFUSER TAG CFM AMOUNT NECK SIZE / FIN-TUBE TAG GPM ACTIVE LENGTH</p> <p>NOTE: THE SQUARE SYMBOL SHALL BE USED FOR ALL EQUIPMENT CALLOUTS THAT DO NOT REQUIRE ELECTRICAL POWER.</p>
------------------------------------------------------------------------------------------------------------------------------------------------------------------------------------------------------------------------------------------------------------------------------------------------------------------------------------------------------------------------------------------------------------------------------------------------------------------------------------------------------------	--------------------------------------------------------------------------------------------------------------------------------------------------------------------------------------------------------------------------------------------------------------------------------------------------------------------------------------------------------------------------------------------------------------------------------------------------------------------------------------------------------------------------------------------------------------------------------------------------------------------------------------------------------------------------------------------------------------------------------------------------------------------------------------

MECHANICAL— ABBREVIATIONS

AC-----AIR CONDITIONING
 AFF-----ABOVE FINISHED FLOOR
 AMP-----AMPERE
 AVG-----AVERAGE
 AWT-----AVERAGE WATER TEMPERATURE
 BHP-----BRAKE HORSE POWER
 BTU-----BRITISH THERMAL UNIT
 BTUH-----BTU PER HOUR
 CFM-----CUBIC FEET PER MINUTE
 CD-----CEILING DIFFUSER
 CW-----CITY WATER
 DB-----DRY BULB / DECIBELS
 DEG-----DEGREE
 DIA-----DIAMETER
 DIM-----DIMENSION
 DN-----DOWN
 DWG-----DRAWING
 EAT-----ENTERING AIR TEMPERATURE
 EDB-----ENTERING DRY BULB TEMPERATURE
 EFF-----EFFICIENCY
 ENT-----ENTERING
 ER-----EXHAUST REGISTER
 ESP-----EXTERNAL STATIC PRESSURE
 EWB-----ENTERING WET BULB
 EWT-----ENTERING WATER TEMPERATURE
 EXH-----EXHAUST
 EXIST-----EXISTING
 °F-----FAHRENHEIT
 F-----FAN
 FC-----FAN COIL UNIT
 FD-----FIRE DAMPER
 FLA-----FULL LOAD AMPS
 FLR-----FLOOR
 FPM-----FEET PER MINUTE
 FT-----FEET
 GA-----GAUGE

HGT-----HEIGHT
 HZ-----FREQUENCY (CYCLES PER SECOND)
 IN-----INCHES
 KW-----KILOWATT
 LAT-----LEAVING AIR TEMPERATURE
 LB-----POUNDS
 LDB-----LEAVING DRY BULB AIR TEMPERATURE
 LRA-----LOCK ROTOR AMPS
 MAX-----MAXIMUM
 MBH-----1,000 BTU
 M.C.-----MECHANICAL CONTRACTOR
 MD-----MOTORIZED DAMPER
 MIN-----MINIMUM
 NO-----NUMBER / NORMALLY OPEN
 NTS-----NOT TO SCALE
 OA-----OUTSIDE AIR
 OBD-----OPPOSED BLADE DAMPER
 OD-----OUTSIDE DIAMETER
 PD-----PRESSURE DROP OR DIFFERENCE
 PH-----PHASE (ELECTRICAL)
 RLA-----RUNNING LOAD AMPS
 RA-----RETURN AIR
 RR-----RETURN REGISTER
 RPM-----REVOLUTION PER MINUTE
 SP-----STATIC PRESSURE (IN. W.G.)
 TA-----THROW AWAY
 TEMP-----TEMPERATURE
 TON-----12,000 BTUH COOLING CAPACITY
 TSP-----TOTAL STATIC PRESSURE (IN. W.G.)
 T-----THERMOSTAT
 TYP-----TYPICAL
 V-----VOLT (ELECTRICAL)
 VD-----MANU. VOLUME DAMPER
 VEL-----VELOCITY
 W-----WAIT
 WB-----WET BULB



UNIT/CABINET HEATER SCHEDULE

UNIT NO.	LOCATION	TYPE	CAP. MBH	AIR			WATER			MOTOR			MANUFACTURER AND MODEL NO.		
				CFM	ENT. °F	LVG. °F	GPM	ENT. °F	LVG. °F	P.D. FT.	H.P.	VOLTS		PHASE	CYCLE
CUH-1	STAIR #1	WALL	16.2	230	60	125	1.5	190	170	.15	1/15	120	1	60	STERLING F-1000-02
CUH-2	STAIR #2	WALL	16.2	230	60	125	1.5	190	170	.15	1/15	120	1	60	STERLING F-1000-02
CUH-3	LOBBY (101)	WALL	47.2	505	60	129	4.0	190	170	1.0	1/10	120	1	60	STERLING RC-1200-06
UH-1	MECHANICAL	HORIZONTAL	39.2	700	0	32	4.4	190	170	.17	1/30	120	1	60	STERLING HS-60
UH-2	STORAGE	HORIZONTAL	15.65	420	60	96	1.9	190	170	2.2	9W	120	1	60	STERLING HS-115A
UH-3	ATTIC	HORIZONTAL	34.8	750	60	103	3.5	190	170	.12	1/30	120	1	60	STERLING HS-48
UH-4	ATTIC	HORIZONTAL	34.8	750	60	103	3.5	190	170	.12	1/30	120	1	60	STERLING HS-48
UH-5	ATTIC	HORIZONTAL	34.8	750	60	103	3.5	190	170	.12	1/30	120	1	60	STERLING HS-48
UH-6	ATTIC	HORIZONTAL	34.8	750	60	103	3.5	190	170	.12	1/30	120	1	60	