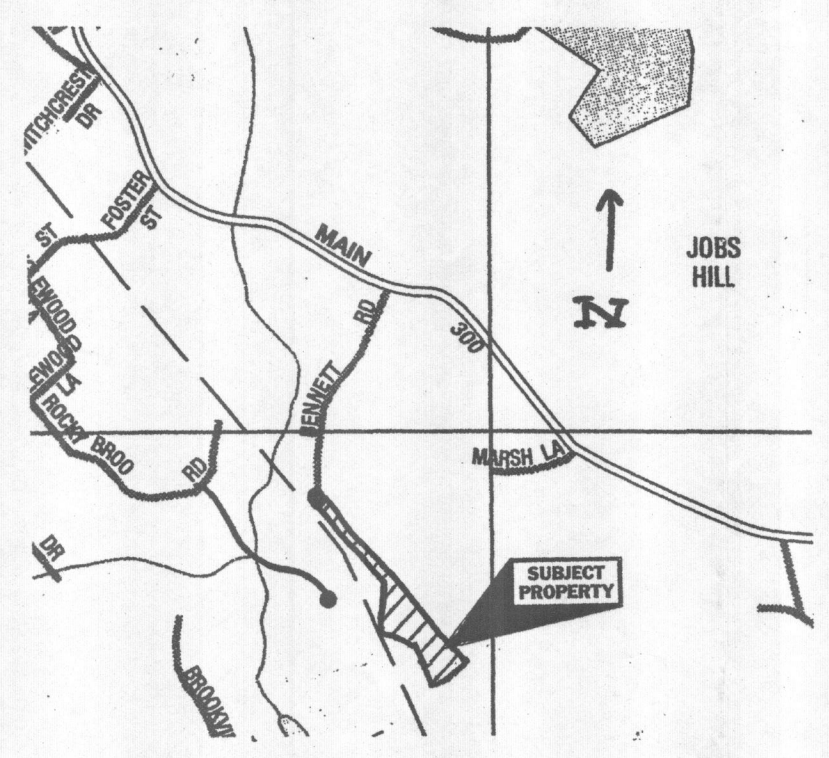


# Legend

- Existing Grade . . . . . 87.2 x 90
- Edge Of Wetlands . . . . . 101 102 103
- 25' No Disturb Zone . . . . . x-x-x-x-x
- 75' No Build Zone . . . . . o-o-o-o-o
- 100' Wetland Buffer Zone . . . . . - - - - -
- Continuous Row Of Staked Hay Bales Faced With Filter Fabric . . . . . [Symbol]
- Finish Grade . . . . . 134

# Locus Map

(Not To Scale)

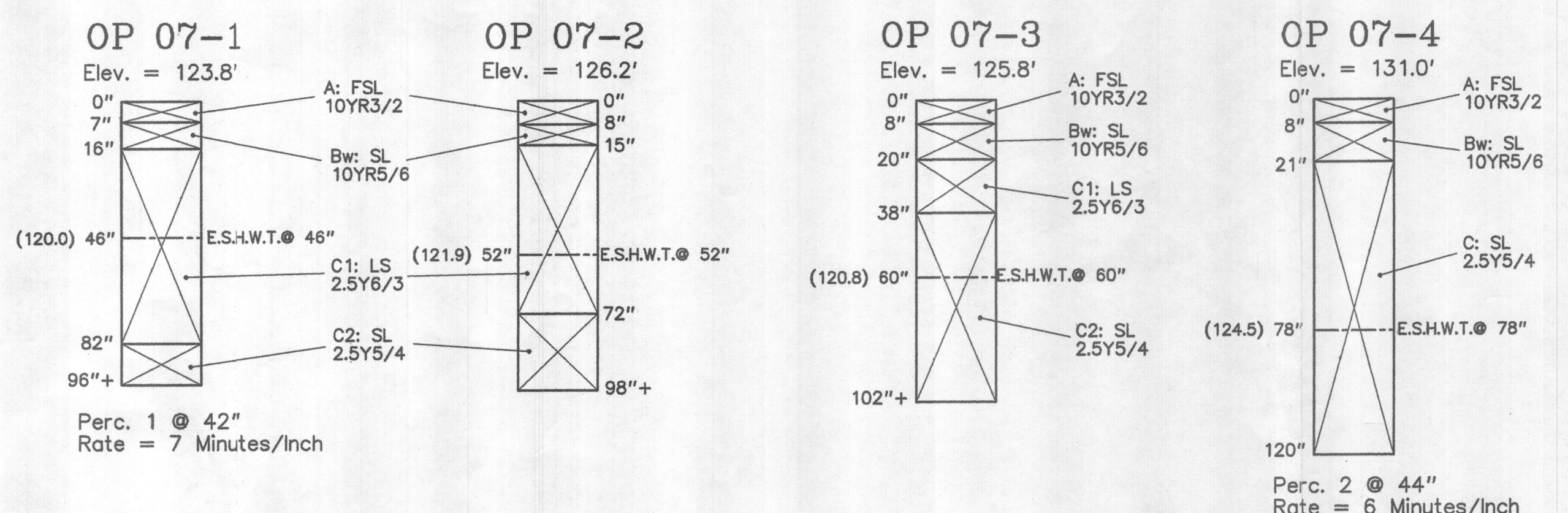


## Discretionary Cutting Area Calculations

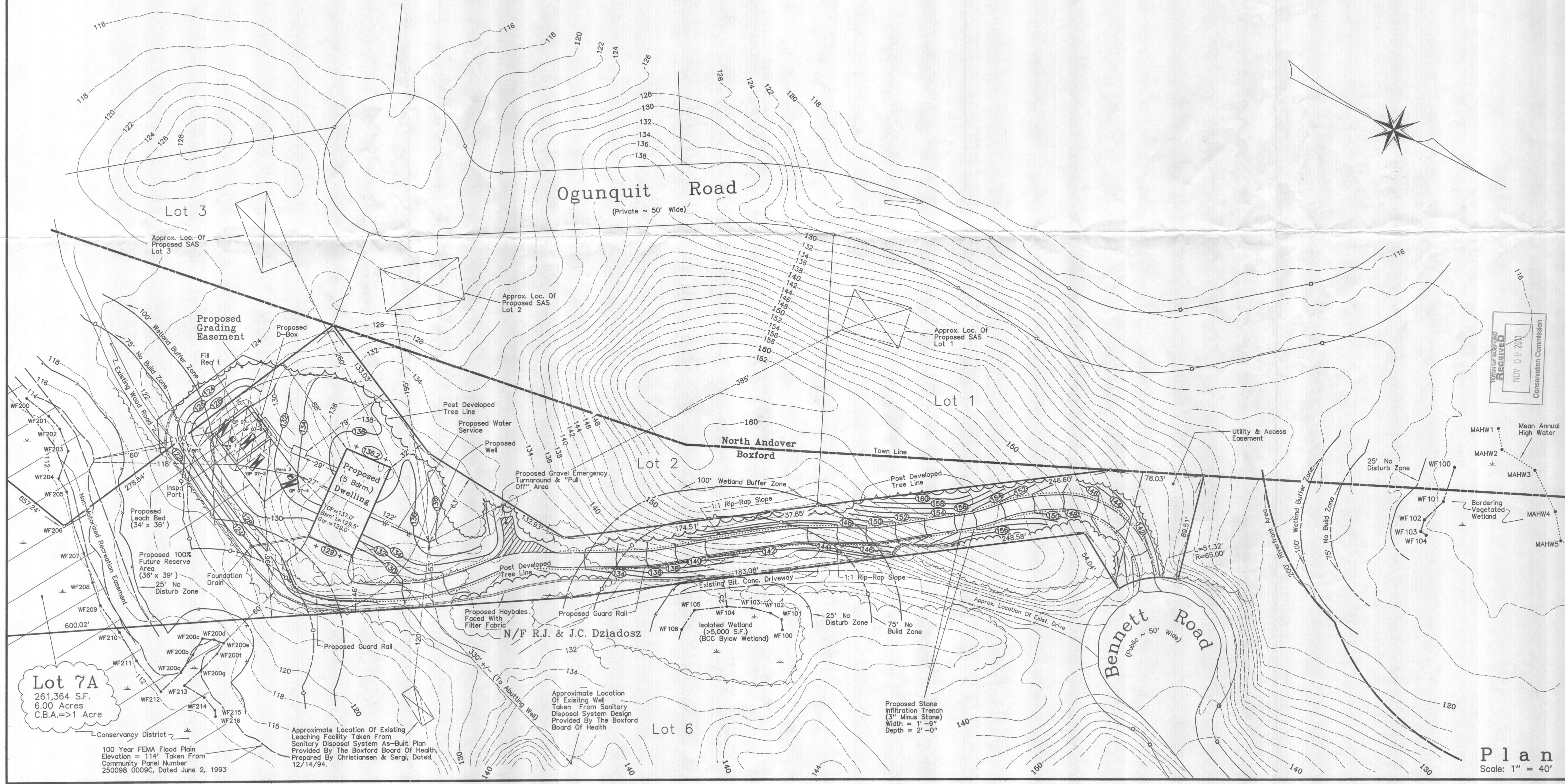
Total Overstory On Lot = 19,000 S.F. +/-  
 Proposed Overstory Alteration = 7,400 S.F. +/- (38.9%)

# Soil Logs

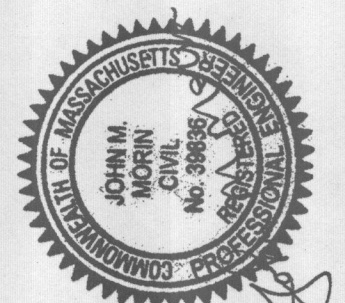
Date Performed: 5/30/07 & 6/20/07  
 Performed By: Greg Hochmuth (Neve-Morin Group, Inc.)  
 Witnessed By: Kendell Quarles (Boxford Board of Health)



**Zoning District:**  
 R-A - Residence-Agricultural District  
 Conservancy District  
 Assessors: Map 23, Block 1, Parcel 16.7



**THE NEVE - MORIN GROUP, INC.**  
 Engineers - Surveyors - Land Use Planners  
 447 Old Boston Road - U.S. Route 1  
 Topsfield, Massachusetts 01983  
 Telephone Number: 978-887-8586  
 Facsimile Number: 978-887-3480



Designed By: G.J.H.  
 Drafted By: G.J.H.  
 Checked By: J.M.M.  
 Scale: As Noted  
 Date: November 20, 2007

No.	Description	Date
1.	Per BCC Comments	12/19/07
2.	Add Infiltration Trench & Emergency Turnaround/Pull Off Area	11/8/11

**Sanitary Disposal System Design**  
 Designed For  
**Peter & Kerry Breen**  
 Lot 7A - Bennett Road  
 Boxford, Massachusetts

Drawing No. **S-684-7A**  
 Sheet No. **1 Of 2**

**Plan**  
 Scale: 1" = 40'