



LEGEND

	BORDERING VEGETATED WETLAND
	25' NO DISTURB
	75' NO BUILD
	100' BUFFER ZONE
	VERNAL POOL
	100' VERNAL POOL BUFFER
	TOP OF BANK
	200' RIVERFRONT AREA

GENERAL NOTES:

1. WETLAND RESOURCE AREAS TAKEN FROM PLAN ENTITLED "PLAN OF LAND IN BOXFORD, MASS. SHOWING WETLAND RESOURCE AREAS" 57 MAIN STREET, PREPARED FOR ELMLEA PARTNERSHIP TRUST, DATED OCTOBER 19, 2004 AND PREPARED BY THE NEVE-MORIN GROUP, INC.
2. CONCEPTUAL SUBDIVISION INCLUDES BOXFORD ASSESSOR'S MAP 28, BLOCK 2, LOT 17 & MAP 28, BLOCK 1, LOTS 1 & 1.1.
3. THE SUBJECT PARCELS ARE LOCATED ENTIRELY WITHIN THE NATURAL HERITAGE ESTIMATED HABITATS OF RARE SPECIES AND NATURAL HERITAGE PRIORITY HABITATS OF RARE SPECIES (PH 1994).

PROJ. #2564

CONCEPTUAL SUBDIVISION

ELMLEA SUBDIVISION
IN
BOXFORD, MASSACHUSETTS
MAIN STREET
PREPARED FOR:
ELMLEA PARTNERSHIP TRUST

ASSESSOR'S MAP 28, BLOCK 2, LOT 17 & MAP 28, BLOCK 1, LOT 1 & 1.1

NO.	DESCRIPTION	DATE

REVISIONS

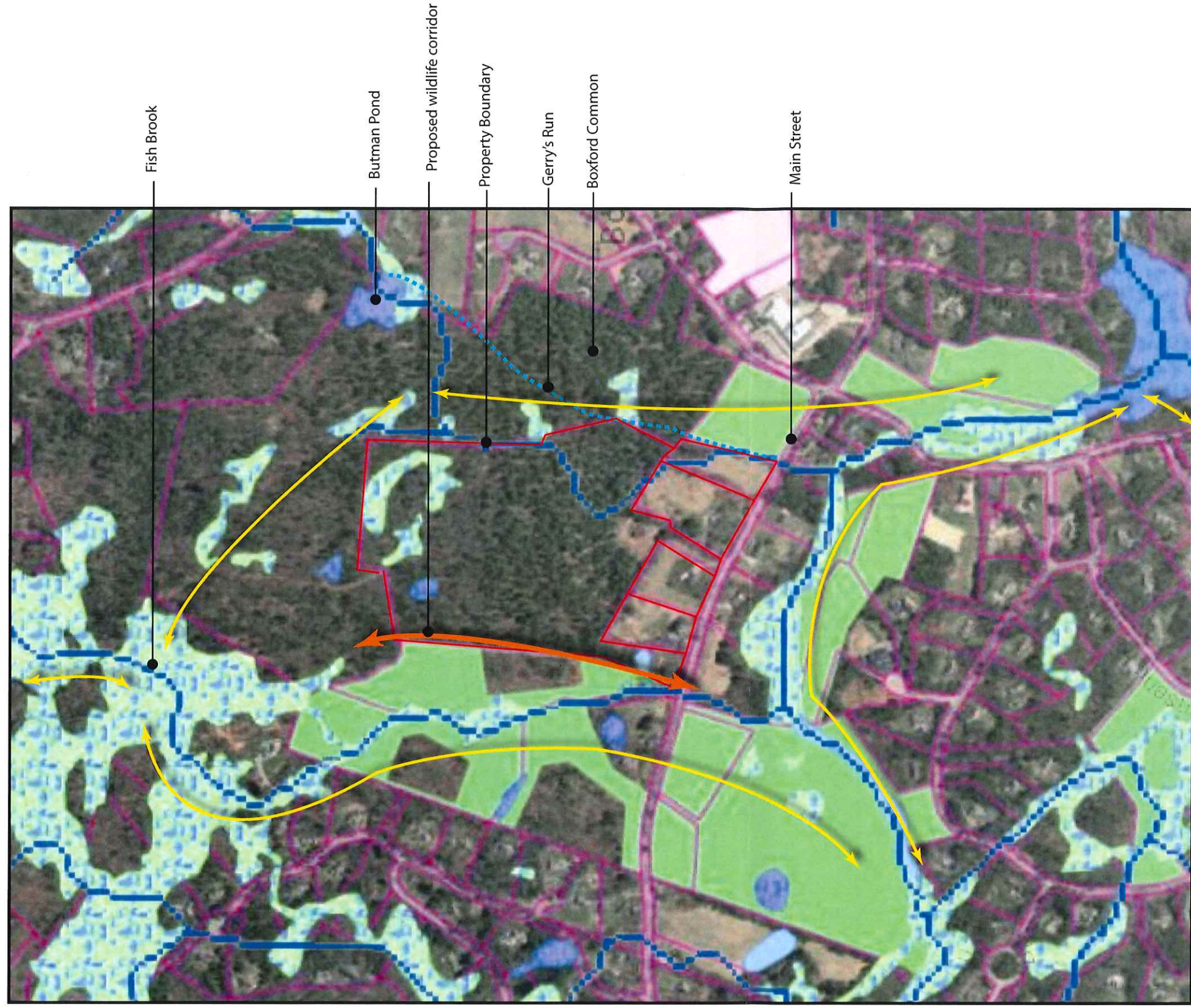
SURVEY BY: N/A
DRAFTED BY: WAS
CHECKED BY: JMM
APPROVED BY: JMM

DATE: MARCH 30, 2019

SCALE: 1"=80'

The Morin-Cameron GROUP, INC.
CIVIL ENGINEERS | ENVIRONMENTAL CONSULTANTS
LAND SURVEYORS | LAND USE PLANNERS
407 STATE STREET, SUITE 200, WILMINGTON, MA 01897
P: 978.887.8558 F: 978.887.2488 WWW.MORINCAMERON.COM

Existing Wildlife Corridors on/adjacent to Haynes Property, Fish Brook and Gerry's Run



Massachusetts Stream Grid.

Data obtained from USGS StreamStats (streamstats.usgs.gov)

Estimated wildlife corridors demarcated by DeRosa Environmental based on water bodies and undeveloped area

- DEP Wetlands General Categories**
- MARSH/BOG
 - WOODED MARSH
 - CRANBERRY BOG
 - SALT MARSH
 - OPEN WATER
 - RESERVOIR (WITH PWSID)
 - TIDAL FLATS
 - BEACH/DUNE

- Openspace by Primary Purpose**
- CONSERVATION
 - RECREATION
 - CONSERVATION AND RECREATION
 - AGRICULTURE
 - HABITAT
 - HISTORICAL/CULTURAL
 - SCENIC (OFFICIAL DESIGNATION ONLY)
 - WATER SUPPLY
 - FLOOD CONTROL
 - UNDERWATER
 - OTHER
 - UNKNOWN