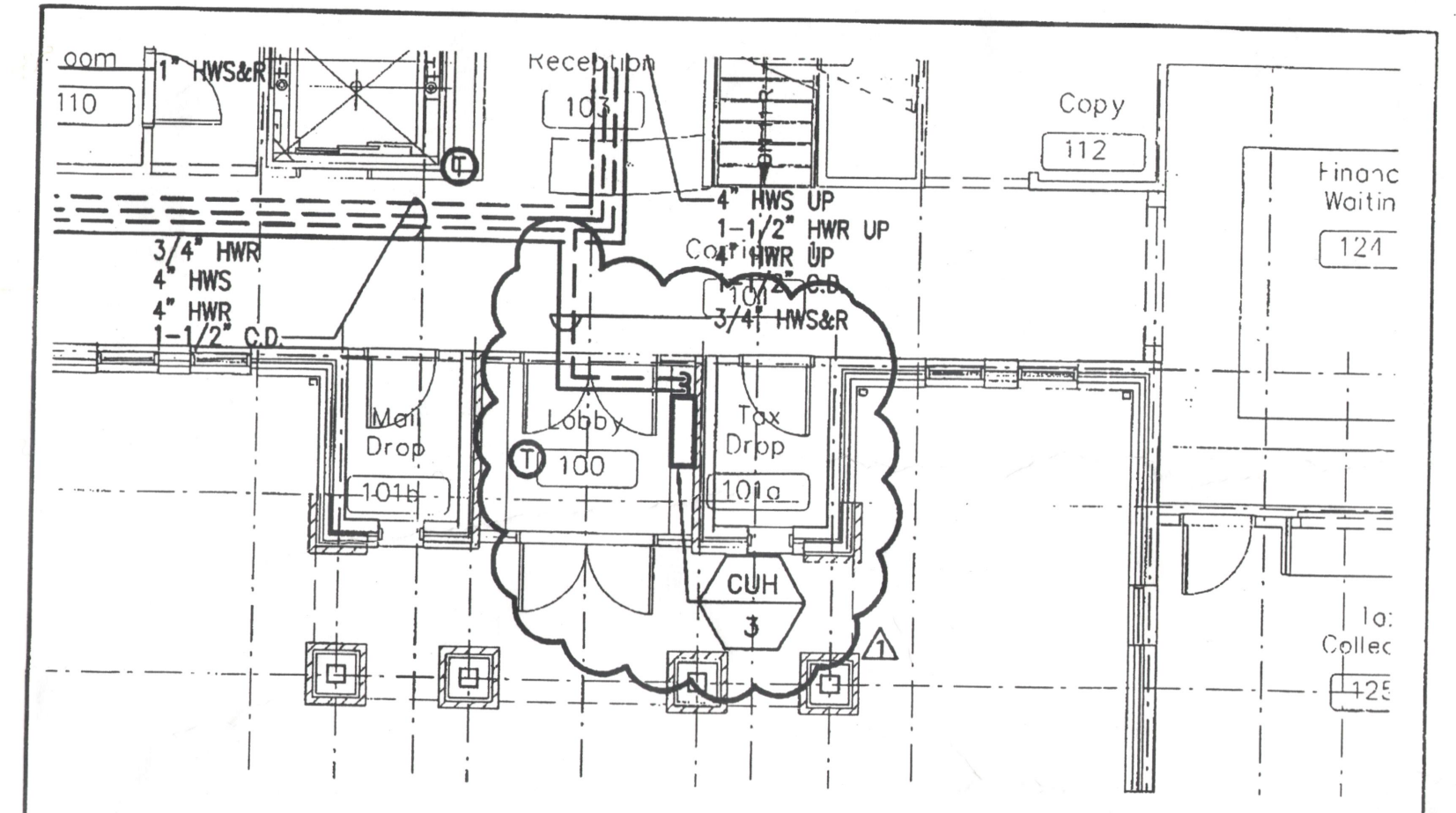


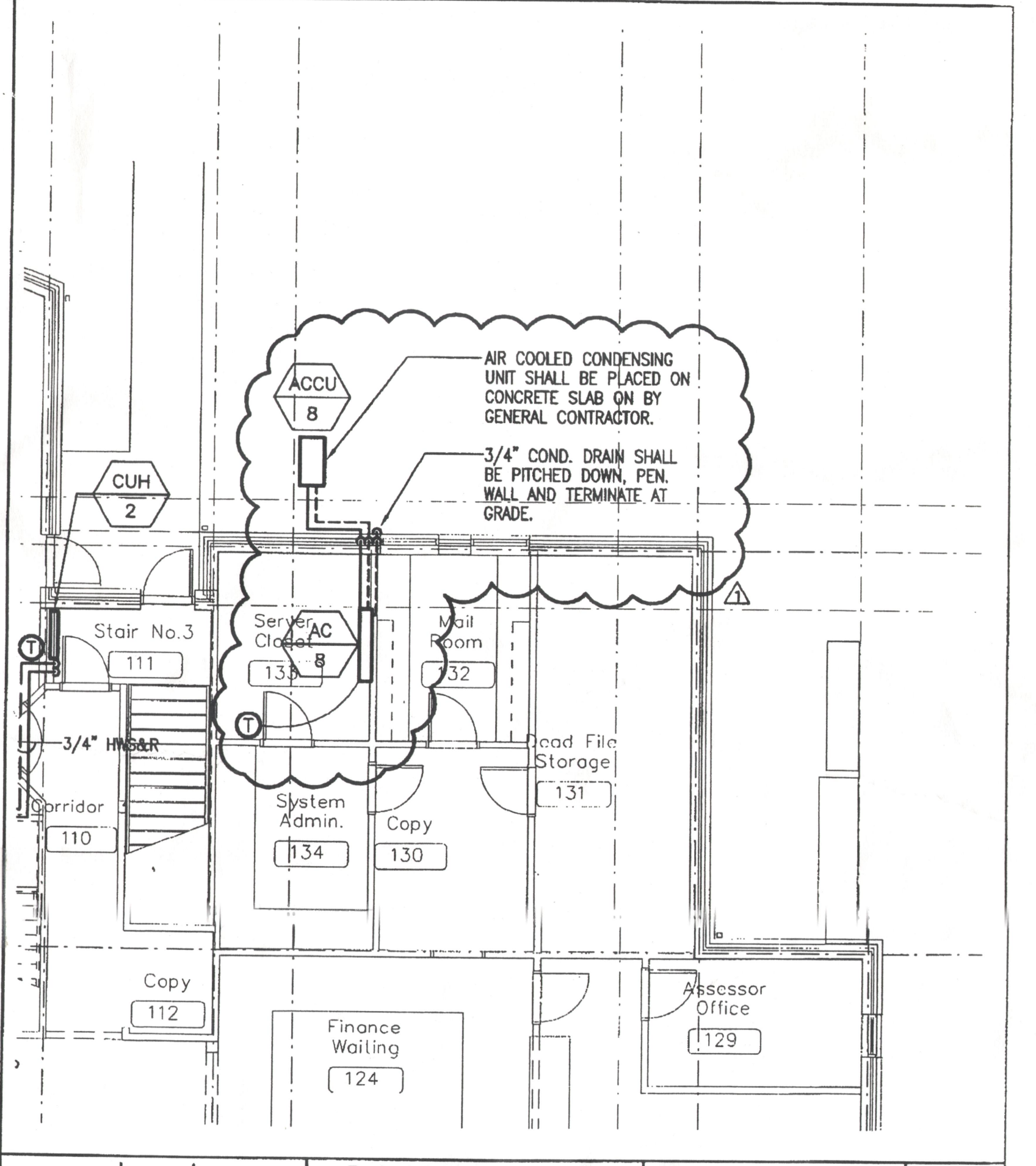
MECHANICAL FIRST FLOOR PIPING PLAN
SCALE: 1/8"=1'-0"

Mar 20 02 04:15p BER, Inc. (508) 230-0265 p.3



MECHANICAL REFRIGERANT PIPING PART PLAN
SCALE: 1/8"=1'-0"

Mar 20 02 04:15p BER, Inc. (508) 230-0265 p.4



MECHANICAL REFRIGERANT PIPING PART PLAN
SCALE: 1/8"=1'-0"

UNIT/CABINET HEATER SCHEDULE														
UNIT NO.	LOCATION	TYPE	CAP. MBH	AIR CFM	WATER GPM	HP	VOLTS	PHASE	CYCLE	MANUFACTURER AND MODEL NO.				
CUH-1	STAR #1	WALL	18.2	230	60	1.25	1.80	170	.15	1/15	120	1	80	STERLING E-1000-02
CUH-2	STAR #2	WALL	18.2	230	60	1.25	1.80	170	.15	1/15	120	1	80	STERLING E-1000-02
CUH-3	LOBBY (101)	WALL	41.9	505	60	1.29	4.0	180	1.0	1/10	120	1	80	STERLING E-1000-04
LM-1	MECHANICAL	HORIZONTAL	39.2	700	0	3.2	4.4	190	1.7	1/30	120	1	80	STERLING HE-90
LM-2	STORAGE	HORIZONTAL	15.63	420	0	9.6	1.8	190	2.2	9W	120	1	80	STERLING HE-116A
LM-3	ATTIC	HORIZONTAL	34.8	790	0	10.3	3.5	190	1.7	1/20	120	1	80	STERLING HE-18
LM-4	ATTIC	HORIZONTAL	34.8	790	0	10.3	3.5	190	1.7	1/20	120	1	80	STERLING HE-18
LM-5	ATTIC	HORIZONTAL	34.8	790	0	10.3	3.5	190	1.7	1/20	120	1	80	STERLING HE-18
LM-6	ATTIC	HORIZONTAL	34.8	790	0	10.3	3.5	190	1.7	1/20	120	1	80	STERLING HE-18

MECHANICAL REFRIGERANT PIPING PART PLAN
SCALE: 1/8"=1'-0"

1. The unit heater and the diffuser located in room 116 are correct and intentional.

J. STEWART ROBERTS ASSOCIATES INC. ARCHITECTS

48 GROVE STREET SOMERVILLE, MA 02144-2500



BER BUILDING ENGINEERING RESOURCES INC. 21 Main Street, 3rd Fl., Somerville, MA 02145

Revisions:

BOXFORD TOWN HALL, Boxford, Massachusetts

Sheet Title: Mechanical First Floor Mechanical Piping Plan

Date: 01 Mar 02 Drawn By: JMR Scale: 1/8"=1'-0" Project No.:

M2.0

