



## **TOWN OF BOXFORD**

*Office of the Selectmen*

7A Spofford Road  
Boxford, MA 01921

**Alan J. Benson**  
**Town Administrator**

**Tel: (978) 887-6000 x502**  
**Fax: (978) 887-5361**

abenson@town.boxford.ma.us

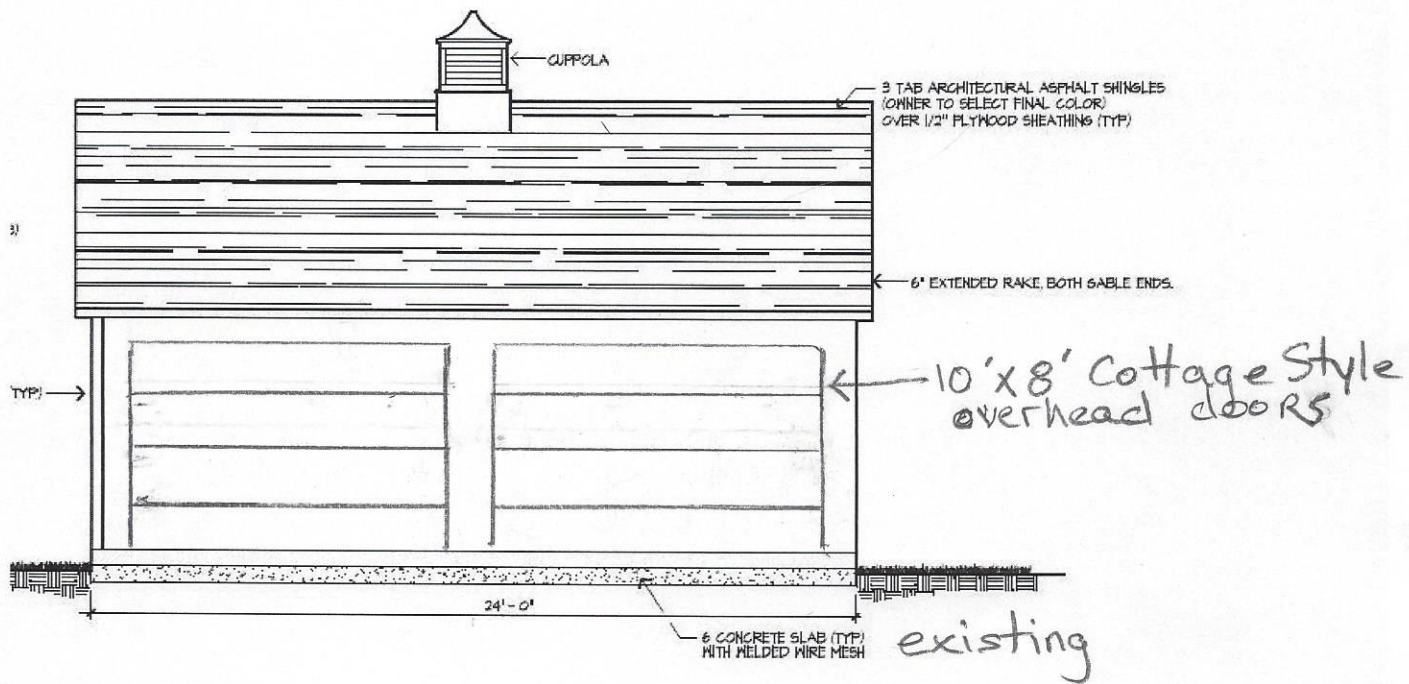
### **CONSTRUCTION SERVICES BUILDING AND EQUIPMENT SHED -- BOXFORD COMMON**

**RECREATION AREA**

**TOWN OF BOXFORD**

**Released: 12/11/19, 4:00PM**

1. Please see two Edited Plans for the Shed Construction Project



STORAGE BUILDING NOTES:

1. GC RESPONSIBLE FOR ANY REQUIRED BUILDING PERMIT.
2. USE CONCRETE SLAB AS FLOOR.
3. 2"x4" WALL CONSTRUCTION 16" O.C., DOUBLE TOP & BOTTOM PLATE  
BOTTOM PLATE TO BE PRESSURE TREATED. SECURE TO SLAB W/  
1/2" ANCHOR BOLTS 2' ON CENTER.
4. 2X6" ROOF RAFTERS 16" O.C.
5. ALL INTERIOR WALLS TO RECEIVE 5/8" PLYWOOD

9. COORDINATE SIZE OF GUPOLAS PRIOR TO FABRICATION.
10. LOCATE AS DIRECTED BY LANDSCAPE ARCHITECT IN THE FIELD.
- II. PROVIDE 8" DEEP LOFT STORAGE ON INTERIOR OF BUILDING

*Both ends*

COMPOSITE SIDING NOTES:

APPROVED PRODUCTS: ~~BORAL TRICOLOR SIDING CHANNEL BEVEL~~  
~~BORAL TRICOLOR TRIM~~

MANUFACTURER: ~~BORAL COMPOSITS, INC. (888) 936-3354/06~~

7. ALL EXTERIOR PAINTED SURFACES TO RECEIVE PRIMER AND TWO COATS OF PAINT, AS RECOMMENDED BY MANUFACTURER.

