

TOWNE POND, BOXFORD & NORTH ANDOVER, MA



Towne Pond is a large shallow pond, covering 26 acres that is 3 to 4 feet deep, straddling Boxford and North Andover. An adjoining 3 acres of marsh is in the Boxford State Forest. There are no points of public access, but the pond can be viewed from Stonecleaver Road in Boxford.

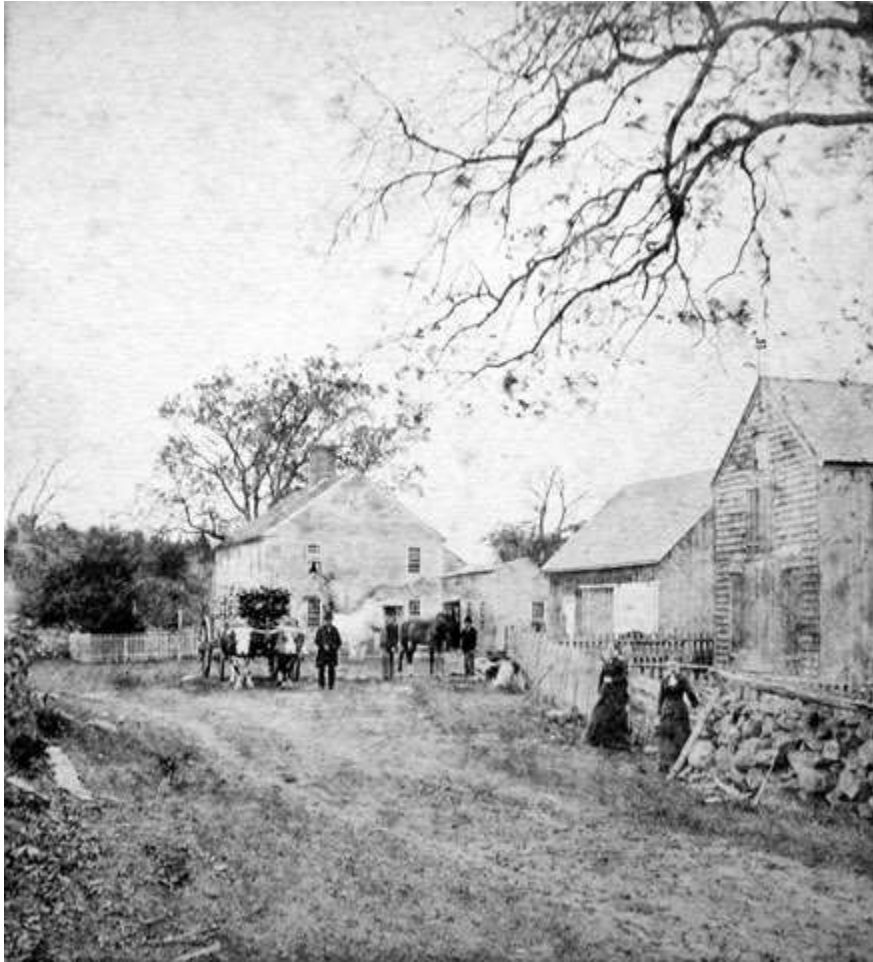
This healthy pond supports a wide variety of plants and animals. During the summer, most of the pond is covered with lily pad and teems with wildlife: beaver, river otters, muskrats, frogs, turtles, fish, birds and insects. In winter, the pond is covered with snow and ice which has been good for ice skating. Water fowl, beaver, river otters and mink are still active on the pond when it is not completely iced over. For the three months that straddle late winter and early spring, when the ice has thawed, the pond looks like a deep lake with no lily pads.



Towne Pond was a “clean” body of water before 2000 according to the Massachusetts Department of Health in that it contained fish free from mercury contamination. This was the only body of water in Boxford that contained fish free from mercury contamination at that time.

Towne Pond is named after the Towne family homestead built in 1790 as the first residence along the pond. The owner, Mr. John Towne was a soldier in the French and Indian War in 1759 and also served in the Battle of Bunker Hill. A descendant, Hiram N. Towne occupied the residence in the early 1900’s. Hiram became the first Master of the Boxford Grange in 1911. After his death in 1932, the estate was sold with a portion of real estate being given to the Commonwealth as state forest.

TOWNE HOMESTEAD 1870



*Pictures and historical information courtesy of Scott Roth