

December 8, 2015



Ross Povenmire, Director of Conservation
Boxford Conservation Commission
7A Spofford Road
Boxford, MA 01921

Subject: Pre-Construction Photographs
DEP File Number 114-1166

Dear Ross,

As you know, I was selected as the Environmental Monitor, (EM), for the above referenced project. As the EM I will be monitoring the project and reporting back to the Commission with written reports for the life of the project.

In accordance with Condition # 7, of the Boxford Wetlands Protection Bylaw Order of Conditions, Please find attached pre-construction photographs of the site to serve as baseline documentation of site conditions.

If you should have any questions regarding this information please do not hesitate to contact our office. We look forward to working with the Commission on this project.

Sincerely,

WILLIAMS & SPARAGES, LLC

Greg J. Hochmuth, RS, PWS, CWS
Ecological Division Manager

cc: Christian C. Huntress, RLA



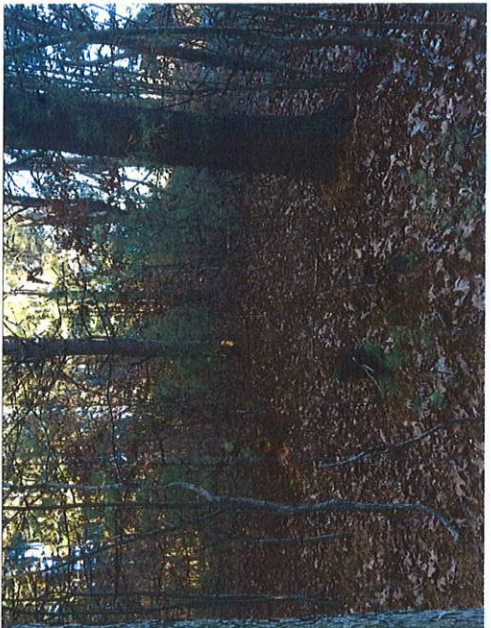
9.



8.



7.



6.



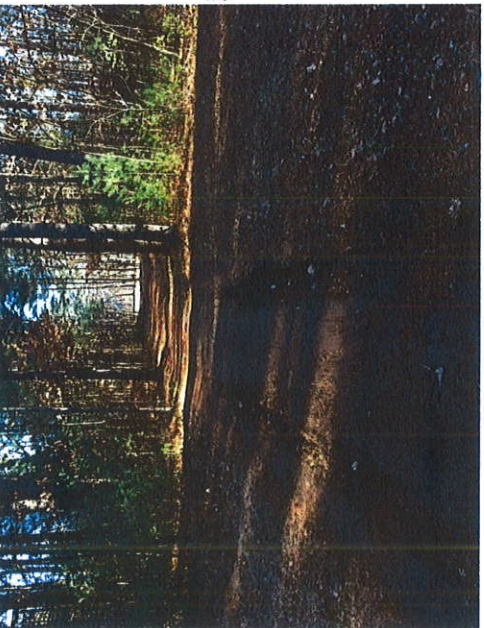
5.



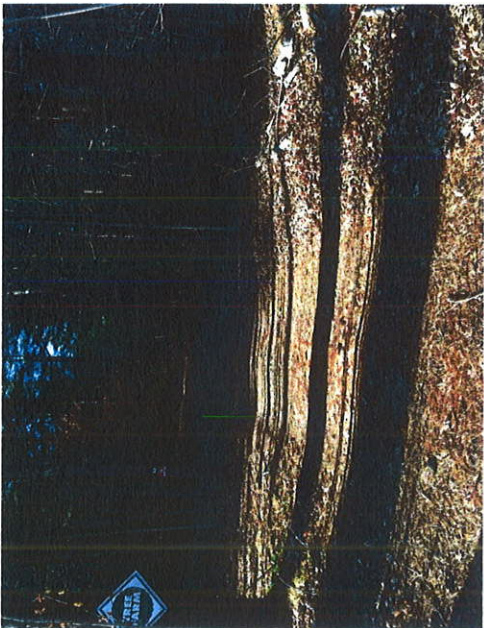
4.



3.



2.



1.



12.



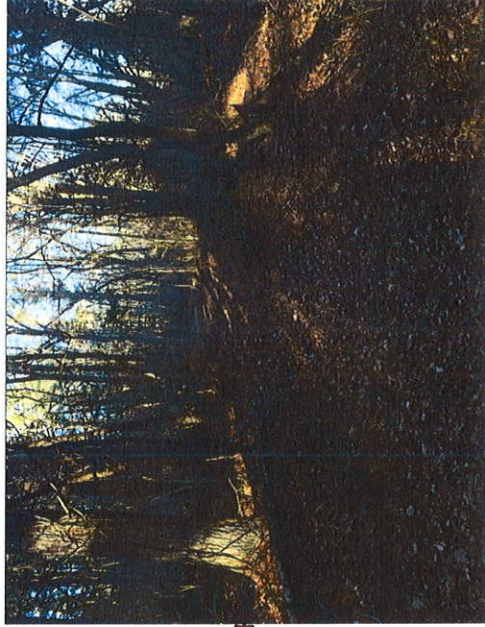
15



18.



11.



14



17.



10.



13



16.



21.



20.



19.



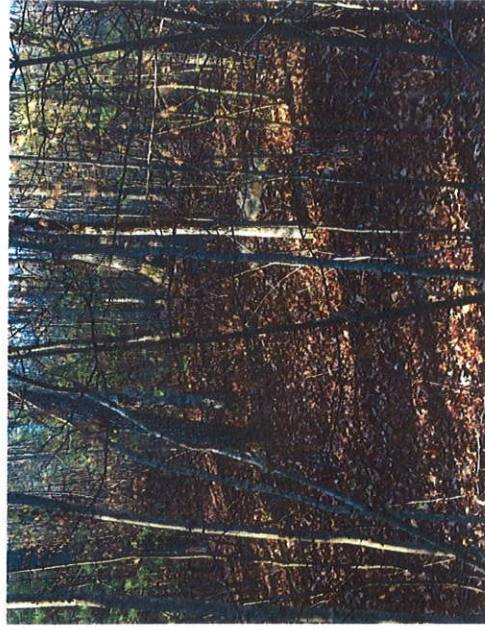
24.



23.



22.



27.



26.



25.



30.



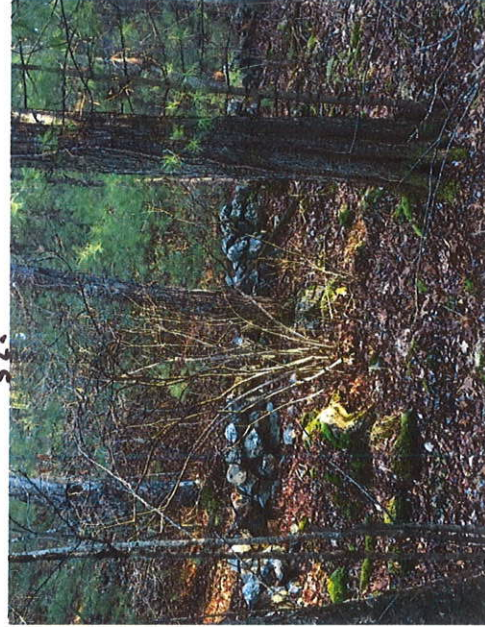
33.



36.



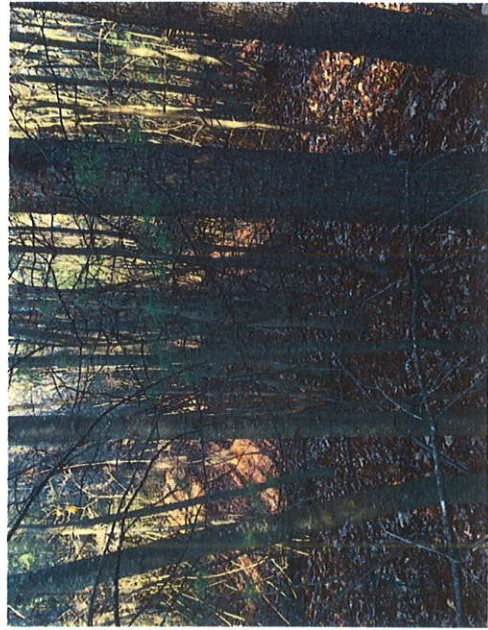
29



32.



35.



28



31.



34.

45.



44.



43.



42.



41.



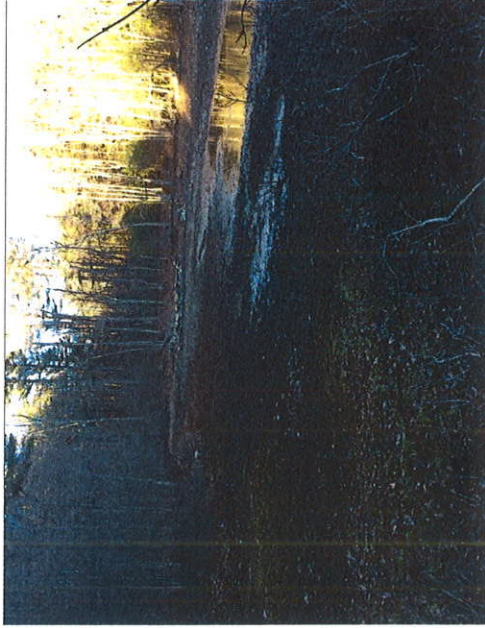
40.



39.



38.



37.





48



47.



50.



46.

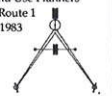


49.



Huntress Associates, Inc.
Landscape Architecture & Land Planning
17 Tewksbury Street, Andover MA 01810
978.470.8882 470.8890 fax

The Neve-Morin Group, Inc.
Engineers - Surveyors - Land Use Planners
447 Old Boston Road - US Route 1
Topsfield, Massachusetts 01983



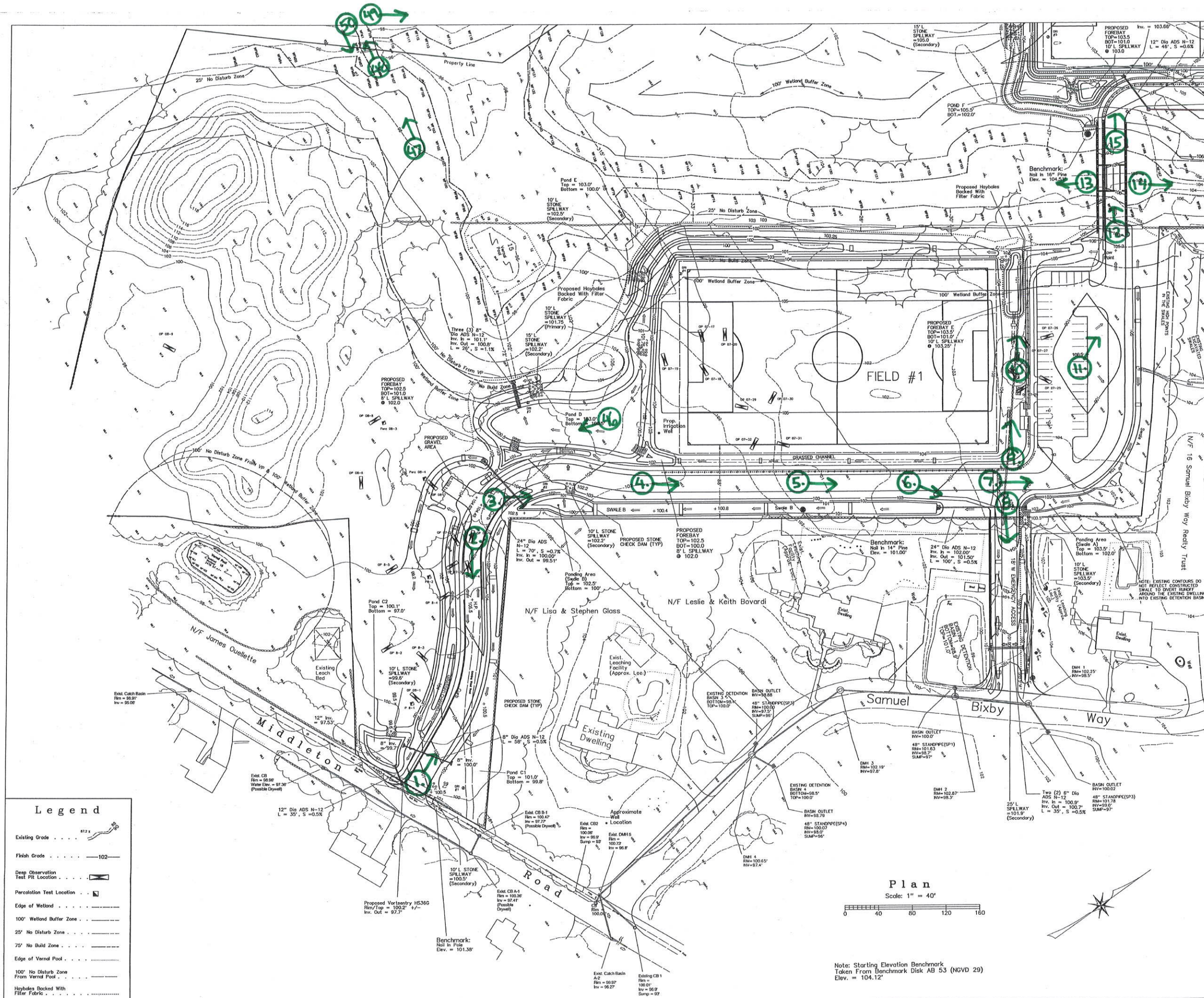
Project:
**HAYNES LAND
Recreation Fields**

Boxford, Massachusetts

Drawing Title:
**Drainage &
Grading**

Revision	Date
1. Layout & Grading Modifications	5/31/13
2. Change Stormceptor To Vortensity And Modify Inverts Accordingly	10/9/13
3. Issued For Construction	6/17/2015

Scale: AS NOTED
Date: 5.17.12
Job: 00-107
File: PR-det
Drawn: JMM
Checked: ---
Drawing No.
1.80
of
26

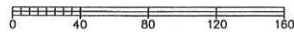


Legend

- Existing Grade
- Finish Grade
- Deep Observation Test Pit Location
- Percolation Test Location
- Edge of Wetland
- 100' Wetland Buffer Zone
- 25' No Disturb Zone
- 75' No Build Zone
- Edge of Vernal Pool
- 100' No Disturb Zone From Vernal Pool
- Hayboles Backed With Filter Fabric

Plan

Scale: 1" = 40'



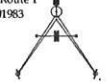
H

Huntress Associates, Inc.

Landscape Architecture & Land Planning
17 Tewksbury Street, Andover MA 01810
978.470.8882 470.8890 fax

The Neve-Morin Group, Inc.

Engineers - Surveyors - Land Use Planners
447 Old Boston Road - US Route 1
Topsfield, Massachusetts 01963



Project:

HAYNES LAND
Recreation Fields

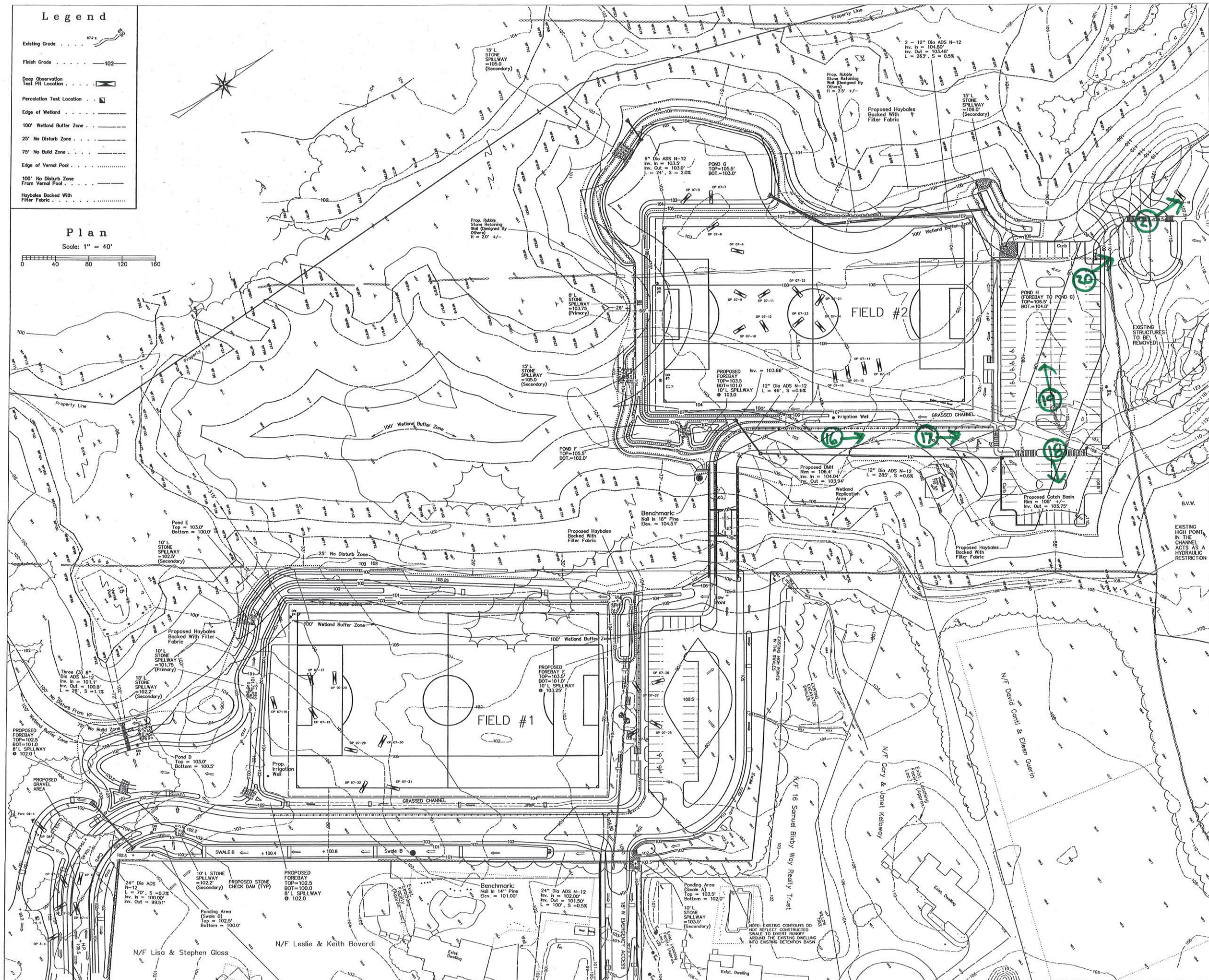
Boxford, Massachusetts

Drawing Title:

Drainage & Grading

Revision	Date
1. Layout & Grading Modifications	5/31/13
2. Replace Stormceptor with CB	10/9/13
3. Issued For Construction	6/17/2015

Scale:	AS NOTED	Drawing No.	1.81
Date:	5.17.12	Job:	00-107
File:	PR-det	Drawn:	JMM
Checked:	—	of	26



Project:
HAYNES LAND
Recreation Fields

Boxford, Massachusetts

Drawing Title:
Drainage & Grading

Plan
Scale: 1" = 40'

Legend

- Existing Grade
- Finish Grade
- Deep Observation Test Pit Location
- Percolation Test Location
- Edge of Wetland
- 100' Wetland Buffer Zone
- 25' No Disturb Zone
- 75' No Build Zone
- Edge of Vernal Pool
- 100' No Disturb Zone From Vernal Pool
- Hayholes Backed With Filter Fabric

Revision Date

1. Layout & Grading Modifications	5/31/13
2. Replace Stormceptor with CB	10/9/13
3. Issued For Construction	6/17/2015

Scale: AS NOTED Drawing No. 1.82

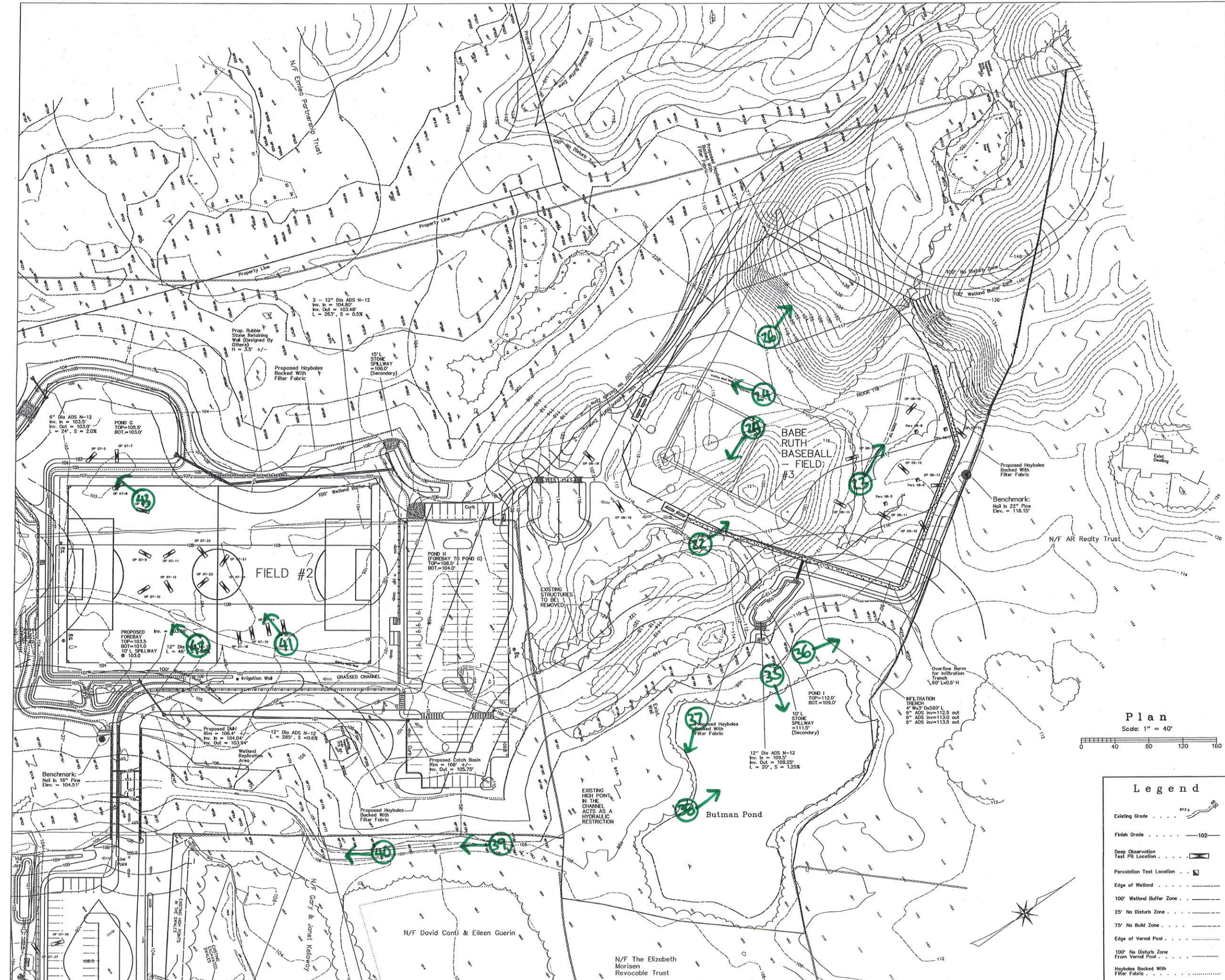
Date: 5.17.12

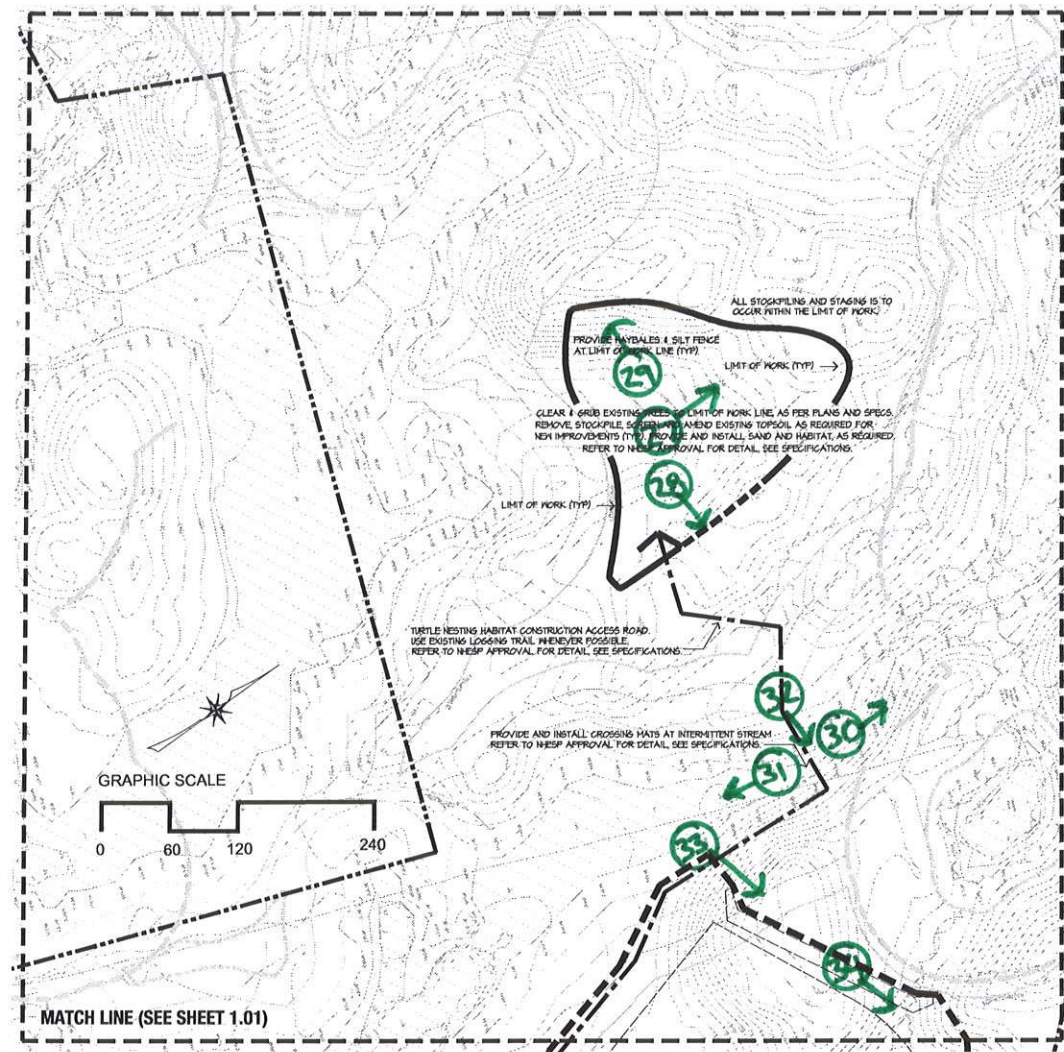
Job: 00-107

File: PR-del

Drawn: JMM of 26

Checked: —





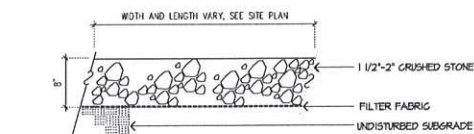
1 TURTLE HABITAT NESTING AREA - SITE PREPARATION PLAN
SCALE: 1" = 60'

CONSTRUCTION PHASING NOTES

- PHASE ONE:
ALL WORK ASSOCIATED WITH THE CONSTRUCTION OF THE TURTLE HABITAT AREA AS REQUIRED BY THE MASSACHUSETTS DIVISION OF FISHERIES AND WILDLIFE, AND IN ACCORDANCE WITH THE REQUIREMENTS OF THE MASSACHUSETTS ENDANGERED SPECIES ACT CONSERVATION AND MANAGEMENT PERMIT, DATED APRIL 10, 2010. SEE SPECIFICATIONS FOR DETAILS.
- PHASE TWO:
ALL WORK ASSOCIATED WITH THE CONSTRUCTION OF RECREATION FIELD #1, INCLUDING ASSOCIATED ACCESS DRIVEWAYS, PARKING AREAS AND WALKWAYS TO BINDER COURSE, DRAINAGE IMPROVEMENTS AND CURBING, ELECTRICAL, AND IRRIGATION IMPROVEMENTS, INVASIVE SPECIES MANAGEMENT AREAS A & B, BUFFER PLANTINGS, GUARD RAILS, FENCES, SHED, KIOSK, PLAY STRUCTURES, AND OTHER ASSOCIATED SITE IMPROVEMENTS NECESSARY FOR THE PROPER USE AND FUNCTION OF THE ATHLETIC FIELD. THIS PHASE EXPRESSLY EXCLUDES ANY WORK ON THE PROPOSED STREAM CROSSINGS, BRIDGE OR WORK ON THE WEST SIDE OF GERRY'S RUN.
- PHASE THREE:
WORK IN THE FOLLOWING SEQUENTIAL ORDER: 1) CONSTRUCTION OF THE STREAM CROSSINGS, INCLUDING THE BRIDGE, WETLAND REPLICATION AREA AND ASSOCIATED DRAINAGE, EXTEND ELECTRICAL UTILITIES AS NECESSARY; 2) CONSTRUCT ALL REMAINING ACCESS ROADWAYS, PARKING AREAS AND WALKWAYS TO BINDER COURSE, INCLUDING DRAINAGE IMPROVEMENTS, AND CURBING; AND 3) ALL WORK ASSOCIATED WITH INVASIVE SPECIES AREAS C & D. 4) UPON STABILIZATION OF THE PRECEDING WORK AREAS TO THE SATISFACTION OF THE BOXFORD CONSERVATION COMMISSION, CONTINUE TO CONSTRUCT RECREATIONAL FIELD #2 INCLUDING FINAL EARTHWORK, SUBSURFACE DRAINAGE, GRAVEL FILL, AND IRRIGATION IMPROVEMENTS, BUFFER PLANTINGS, GUARD RAILS, FENCES, SHED, KIOSK, PLAY STRUCTURES, AND OTHER ASSOCIATED SITE IMPROVEMENTS NECESSARY FOR THE PROPER USE AND OPERATION OF RECREATIONAL FIELD #2.
- PHASE FOUR:
WORK ASSOCIATED WITH THE CONSTRUCTION OF THE BASEBALL FIELD, INCLUDING ASSOCIATED EARTHWORK, DRAINAGE IMPROVEMENTS, WALKWAYS, STEPS, IRRIGATION IMPROVEMENTS, BUFFER PLANTINGS, GUARD RAILS, FENCES, KIOSK, WALLS, BACKSTOPS, SHED AND ASSOCIATED SITE IMPROVEMENTS NECESSARY FOR THE PROPER USE AND OPERATION OF THE BASEBALL FIELD.
- PHASE FIVE:
ALL WORK ASSOCIATED WITH THE ADJUSTMENT OF UTILITIES, FINISHED PAVING OF ALL ASPHALT SURFACES, PARKING LOT MARKINGS, REMOVAL OF ALL EROSION CONTROL DEVICES AND OVERSEEDING AND MAINTENANCE OF ALL LAWN AREAS, PLANTINGS REQUIREMENTS OF THE MASSACHUSETTS ENDANGERED SPECIES ACT CONSERVATION AND MANAGEMENT AND DISTURBED AREAS AS REQUIRED.

SITE PREPARATION NOTES

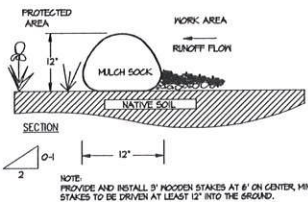
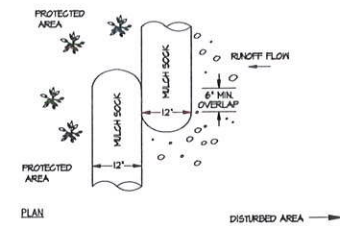
- EXISTING CONDITIONS INFORMATION IS REPRODUCED FROM THE SURVEY PREPARED BY NEVE MORIN GROUP OF TOPSFIELD, MASSACHUSETTS, DATED 5/17/2012.
- WITHIN THE LIMIT OF THE WORK LINE AS NOTED ON THE SITE PREPARATION PLANS, REMOVE AND DISCARD ALL CONCRETE PAVEMENT, BITUMINOUS CONCRETE PAVEMENT, BRICK PAVEMENT, TOP SOIL, MULCH, TRASH, DEAD TREES AND STUMPS, SHRUBBERY, CHAIN LINK FENCE POSTS, RAILS, FABRIC, GATES, FOOTINGS AND ALL APPURTENANCES, BOLLARDS, POSTS, CONCRETE FOOTINGS AND FOUNDATIONS, WALLS AND CURBS UNLESS OTHERWISE NOTED.
- THE ARCHITECT SHALL BE CONSULTED AND WILL REVIEW THE WORK ON SITE WITH THE CONTRACTOR BEFORE ANY WORK SHALL COMMENCE.
- THE CONTRACTOR SHALL VERIFY ALL EXISTING CONDITIONS IN THE FIELD AND REPORT ANY DISCREPANCIES BETWEEN PLANS AND ACTUAL CONDITIONS TO THE ARCHITECT PRIOR TO STARTING WORK.
- THE CONTRACTOR IS RESPONSIBLE FOR ANY DAMAGE TO EXISTING CONDITIONS TO REMAIN THAT ARE DUE TO CONTRACTOR OPERATIONS AND WHICH ARE INSIDE OR OUTSIDE THE LIMIT OF DEMOLITION.
- ALL ITEMS TO BE REMOVED THAT ARE NOT STOCKPILED FOR LATER REUSE ON THE PROJECT OR DELIVERED TO THE OWNER SHALL BE LEGALLY DISPOSED OF OFF SITE BY THE CONTRACTOR.
- THE LOCATIONS OF UNDERGROUND UTILITIES SHOWN ON THIS PLAN ARE DIAGRAMMATIC ONLY. THE CONTRACTOR SHALL CONTACT DISSAFE AND THE PROPER LOCAL AUTHORITIES OR RESPECTIVE UTILITY COMPANIES TO CONFIRM THE LOCATION OF ALL EXISTING UTILITIES BEFORE COMMENCING WORK. ANY DAMAGE DUE TO FAILURE OF THE CONTRACTOR TO CONTACT THE PROPER AUTHORITIES SHALL BE BORNE BY THE CONTRACTOR.
- THE CONTRACTOR SHALL BE RESPONSIBLE FOR COORDINATING HIS EFFORTS OF THE DEMOLITION WITH ALL TRADES.
- THE CONTRACTOR SHALL COORDINATE ALL ADJUSTMENT OR ABANDONMENT OF UTILITIES WITH THE RESPECTIVE UTILITY COMPANY.
- REFER TO GEOTECHNICAL INVESTIGATION PREPARED BY GSI, DATED 4/08/2011.



2 CONSTRUCTION ENTRANCE
SCALE: 1"=1'-0"

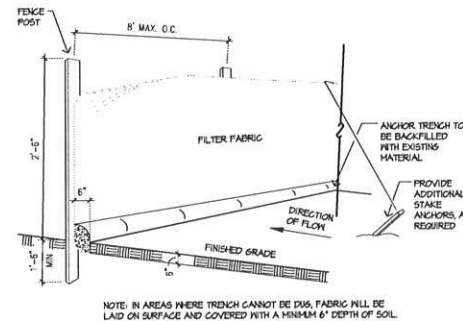
LEGEND

- PROPERTY LINE TOWN PROJECT
- TOWN HISTORIC DISTRICT BOUNDARY
- WETLAND
- WETLAND - 100 FT SETBACK
- VERNAL POOLS - 100 FT NO DISTURB LINE
- WETLAND - 25 FT NO DISTURB LINE
- EXISTING TRAIL
- EXISTING TRAIL TO REMAIN
- SILT FENCE



3 MULCH SOCK EROSION CONTROL
SCALE: 1"=1'-0"

NOTE: CONTRACTOR TO PROVIDE EROSION CONTROL ALONG ENTIRE LIMIT OF WORK LINE. WORK WITHIN 100' WETLAND BUFFER ZONE. MULCH SOCK & SILTATION FENCE. WORK OUTSIDE THE 100' BUFFER AREA. MULCH SOCK ONLY.



4 SILTATION FENCE EROSION CONTROL
SCALE: N.T.S.



Huntress Associates, Inc.

Landscape Architecture & Land Planning
17 Tewksbury Street, Andover MA 01810
978.470.8882 470.8890 fax

Project:

**HAYNES LAND
Recreation Fields**

Boxford, Massachusetts

Drawing Title:

Site Preparation Plan

Revision	Date
ISSUED FOR CONSTRUCTION	6.17.15
RESET SHEET SIZE	6.30.15

Scale:	AS NOTED	Drawing No.	
Date:	6.17.15		1.02
Job:	00-107		
File:	PR-201		
Drawn:	GCH	of	26
Checked:	--		