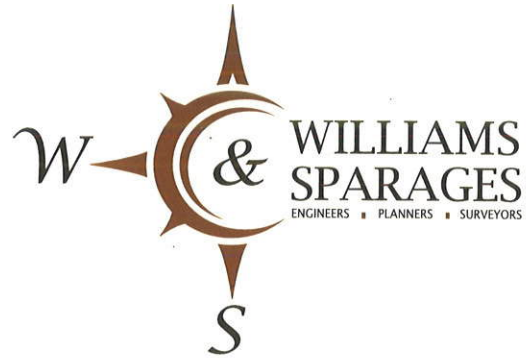


January 25, 2016



Boxford Conservation Commission  
Attn: Ross Povenmire, Director of Conservation  
7A Spofford Road  
Boxford, MA 01921

Subject: Environmental Monitoring Report #6 - Boxford Common  
Phase One Completion  
DEP File Number 114-1166

Dear Commission Members,

As you are aware, I was selected as the Environmental Monitor, (EM), for the above referenced project. Since early last December I have been inspecting the erosion controls and reporting back to your Commission as required in the Order of Conditions, (OOC).

It is our understanding that Chris Huntress, from Huntress Associates, Certified Professional in Responsible Charge of the Project, has submitted a letter to your Commission stating that RAD Sports has substantially completed the work associated with Phase One of the Boxford Common project and has requested that the Boxford Conservation Commission allow the Boxford Common project to advance into Phase Two.

Condition #8 of the Boxford Wetlands Protection Bylaw OOC discusses the project phasing. This Condition requires a review to be conducted by the Commission following each phase to ensure compliance with the approved plans and satisfactory stabilization of work prior to the applicant beginning work on the next phase.

Condition #9 of the same OOC states that at no time during construction of any phase of the project shall more than 5 acres of site area be in a non-stabilized condition. The Condition describes a stabilized condition as covered with grass or other non-invasive vegetation, mulch or final construction cover sufficient to substantially eliminate the threat of erosion as determined by the EM, Conservation Agent and the Commission.

Condition #10 requires that following the completion and stabilization of each phase of the project as defined by the OOC, that a written site inspection report with photographs be submitted to the Conservation Commission by the Certified Professional in Responsible Charge certifying that the work is completed in accordance with the approved plans.

Please find attached photographs that were taken on January 14, 2016 & January 22, 2016. The photographs taken on January 14, 2016 show the work being done to deconstruct the access roadway on the west side of the wetland crossing. Wood chips generated from the tree removal effort for Phase One were used to stabilize the access roadway in this location. Following the

removal of the bridge, new erosion controls were installed at the base of the access roadway on both sides of the wetland to prevent erosion and sedimentation into the wetland.

The photographs taken on January 22, 2016 were taken during a site walk with members of the Conservation Commission, Ross Povenmire, Director of Conservation, Chris Huntress and representatives from RAD Sports. The photographs show the progress that RAD Sports has made to stabilize Phase One in preparation for transitioning to Phase Two. During the site visit I recommended that RAD Sports cover the first stretch of the existing wood road from the staging area to the culverts with wood chips that will be generated during the tree removal effort for Phase Two. In addition, it is understood that there will be some minor touch up work to the access road used for Phase One during the spring of 2016.

After reviewing the erosion controls that are installed, and work areas within jurisdictional areas, I certify that Phase One is stabilized sufficiently to eliminate the threat of erosion. If you should have any questions regarding this information please do not hesitate to contact our office.

Sincerely,

WILLIAMS & SPARAGES, LLC



Greg J. Hochmuth, RS, PWS, CWS  
Ecological Division Manager

cc: Christian C. Huntress, RLA  
Alan Benson - Town of Boxford  
Tom Liddy - Lucas Environmental, LLC  
Jim Doherty - Rad Sports  
Margaret Chow-Menzer - Town of Boxford

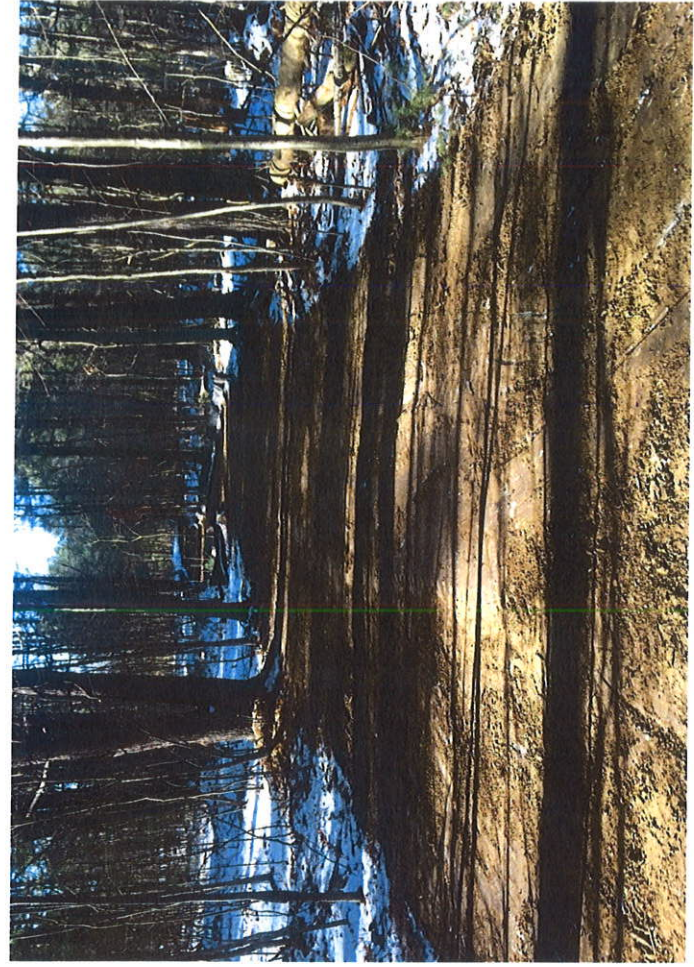
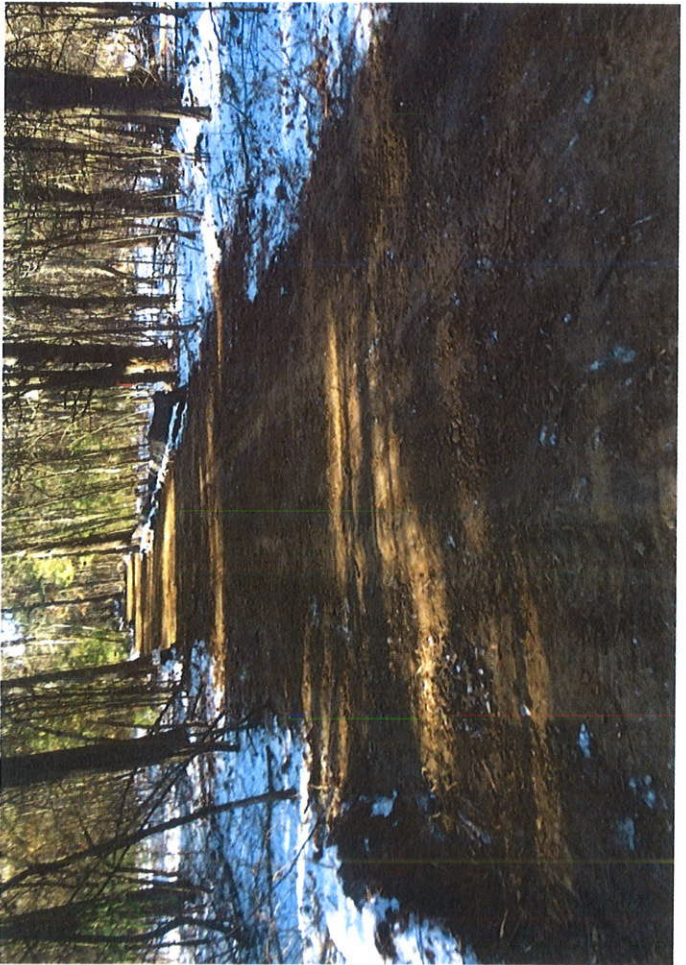
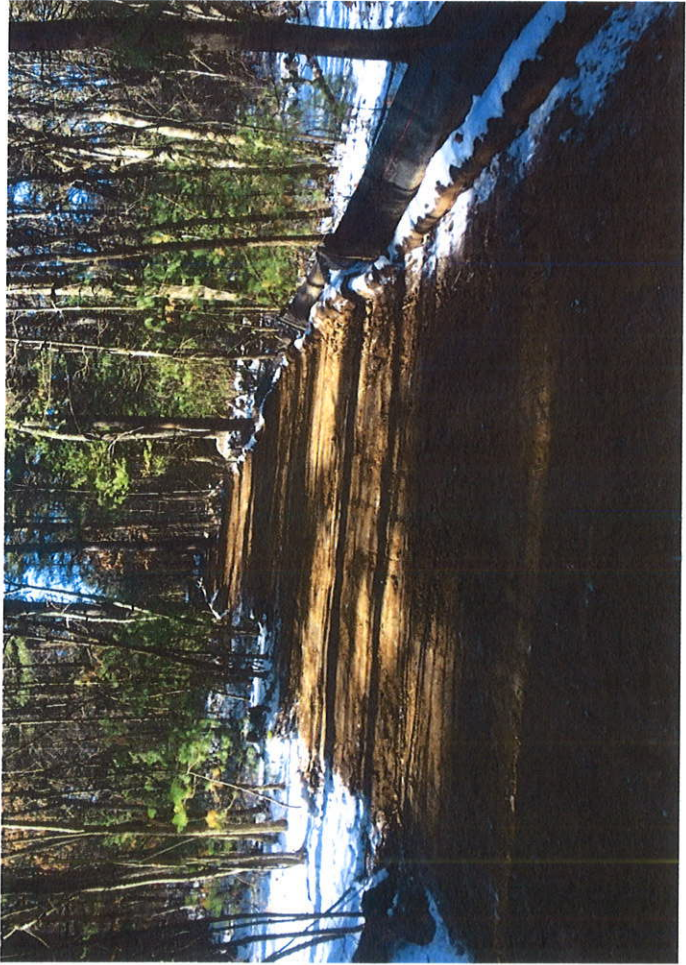


1/14/2016





1/22/2016





9102/22/1





1/22/2016

